



General Instructions:

1. The question paper contains THREE sections- READING, GRAMMAR & WRITING and LITERATURE.
2. Attempt questions based on specific instructions for each part.

SECTION A : READING SKILLS (20 MARKS)

1. Read the passage given below: (10 Marks)

1. The world is big but in a sense, it starts with me. Knowledge and awareness about myself have to precede my knowledge of things other than me. If I want the external environment to appreciate value, I need to do it by myself first. In order to make the atmosphere around me green, I have to be green myself, in belief and action.
2. From dusk to dawn and dawn to dusk, our every activity leaves its footprint on the environment and ecology. It is a 24x 7, eternal phenomenon. A laboured consciousness of having to go green in all possible areas is required in each one of us. It is, after all, our own self- interest and that of our descendants. The conscious application of change is going to become a habit and one's culture in due course. Though we read and hear a lot of green initiatives, we hardly tweak our routines to suit the larger picture.
3. Greenery in the surroundings prevents dust and noise pollution. The way we water and manure plants also matters. Water is also a fast depleting resource. Sprinklers are one example to use and conserve it. Compost from biowaste can be used as manure for plants which is cost effective and eco- friendly. We can also contribute to the preservation of water bodies by not dumping our garbage in them. The use of public transport systems in the place of individual modes can reduce carbon footprint.
4. 'Reuse', 'Recycle', 'Re-engineer' and 'Renew' are the mantras. Let us appreciate, support and contribute our might to the promotional efforts of the community in this direction. Remember, my ecology is also the community, society and nation that I care for which in turn cares for me. In other words, all these seemingly outward initiatives done for others are going to make my life more comfortable ultimately.
5. I have to be therefore, concerned about what sort of environment I am responsible for my own sustenance, livelihood and progress. As long as my impact is positive, my presence will be welcome. If it is otherwise, I am going to be shunned. It is either 'Embrace' or 'Embarrass'.
6. Green initiatives are anti- scorch Earth. Air, water and soil need to be conserved for the thriving of mankind in the future. The increasing onslaughts on the quality of air and soil need to be reversed. The indiscriminate exploitation of water- consumable water is only 0.3% of freshwater- needs to be stopped. The earth ought not to shrink further, continue to breathe easy. Mother earth looks for only love and care from her children and nothing more in return for all the wealth she has so generously showered on us.

Based on the understanding of the passage, answer the following questions :

- (i) Why does the author say that one should be concerned about the environment ? Choose the best option from the following: (1)

(a) For better sustenance	(b) For the betterment of culture
(c) For the betterment of self	(d) For future generations
- (ii) The writer is all for measures to be taken to save the planet Earth when he says, "Air, water and soil need to be conserved for the thriving of mankind in the future". State 2 solutions he offers in the extract. (Paragraph 6) (2)
- (iii) Complete the sentence appropriately taking hints from Paragraph 3. (1)

We need to conserve water because _____.
- (iv) The passage includes some words that are opposites of each other. From the sets (a) – (e) given below, identify two sets of antonyms. (2)

(a) Knowledge and awareness	(b) Reduce and increasing
(c) Belief and action	(d) Dusk and dawn
	(e) Indiscriminate and change
- (v) Complete the sentence appropriately. (1)

The author says that the Earth ought not to shrink further and continue to breathe easy because _____.
- (vi) Supply one point to justify the following : (1)

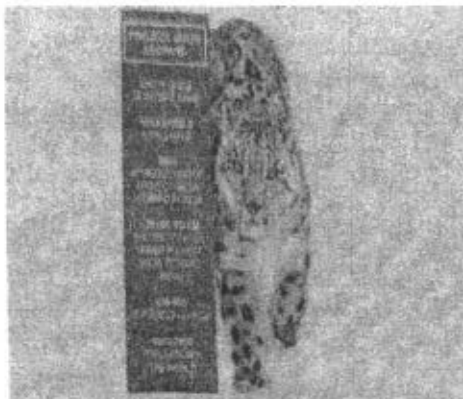
I need to do it by myself, first. In order to make the atmosphere around me green, I have to be green myself in belief and action.
- (vii) Why does the writer say, "The use of public transport systems in the place of individual modes..."? (1)

(a) to enhance air quality	(b) to reduce carbon footprint
(c) to manage ecosystem	(d) All of these
- (viii) Based on your reading of the text, list any 2 preventive measures for the author's statement -"Water is also a fast depleting resource", in Paragraph 3. (1)

2. Read the following passage carefully.

(10 Marks)

1. India is home to an estimated 10% of the global Snow Leopard population spread across five Himalayan states of Jammu and Kashmir, Himachal Pradesh, Uttarakhand, Sikkim and Arunachal Pradesh which is only 5% of the available habitat for the animal.
2. Project Snow Leopard was introduced in India by the Project Snow Leopard Committee instituted by the Ministry of Environment and Forests, Government of India, in the year 2009 to safeguard and conserve India's unique natural heritage of high- altitude wildlife populations and their habitats by promoting conservation through participatory policies and actions.
3. Project Tiger and Project Elephant are prevalent in India with the former introduced in 1973 garnering worldwide attention.
4. The Snow Leopard usually occurs at an altitude of > 2700 m above sea level and is the apex predator in the Himalayan Region along with the Tibetan Wolf. The project is not only to protect the Snow Leopard but as with Project Tiger it is considered an umbrella species and with its protection, comes the protection of other species and the habitat of which they are all a part.
5. Top 3 National Parks in India where the Snow Leopard can likely be seen –
 - (i) Kibber Wildlife Sanctuary- Himachal Pradesh
 - (ii) Ulley Valley – Ladakh
 - (iii) Hemis National Park- Himachal Pradesh



6. The reasons for the introduction of Project Snow Leopard are as follows:
 - (i) High altitudes of India > 3000m including the Himalayan and Trans- Himalayan biogeographic zones support a unique wildlife assemblage of global conservation.
 - (ii) There has been relatively less attention on the region from the viewpoint of wildlife conservation.
 - (iii) The region represents a vast range and system supporting important traditional pastoral economies and lifestyles.
 - (iv) The region provides essential ecosystem services and harbours river systems vital for the nation's food security.
 - (v) India has ratified international agreements promoting the conservation of high – altitude wildlife species such as the Snow Leopard.
 - (vi) The region is important for the country's national security as well as international relations.
 - (vii) The high – altitude wildlife in India today faces a variety of threats.
 - (viii) The existing high – altitude protected areas in India require considerable strengthening.
 - (ix) Wildlife Management in the region needs to be made participatory.

Based on your understanding of the passage, answer the questions given below:

- (i) Complete the following sentence appropriately. (1)
Project Snow Leopard was introduced in India to _____.
- (ii) Complete the following sentence by filling in the blanks from Paragraph 4. (1)
The _____ and the _____ which usually occur at an altitude of > 2700m, are the apex predators in the Himalayan Region.
- (iii) Name Top 3 National Parks in India where the Snow Leopard can likely be seen. (2)
- (iv) Infer the meaning of the line- 'snow leopard is considered as an umbrella species' (Paragraph 4) (1)
- (v) In which states/ UTs of India can the Snow Leopards be found? (1)
- (vi) In which year was the Project Tiger introduced in India? (1)
- (vii) Give reasons for the introduction of Project Snow Leopard in high altitudes in about 40 words. (2)
(Paragraph 6)
- (viii) Which of the following is the most appropriate title for Paragraph 2? (1)
(a) Preserving India's Wild (b) Project Tiger (c) Man in the Wild (d) Project Snow Leopard

SECTION B: WRITING SKILLS AND GRAMMAR (20 MARKS)

GRAMMAR (10 Marks)

3. Complete ANY TEN of twelve of the following tasks, as directed.

- (i) Fill in the blank by using the correct form of the word in the bracket, for the given portion of the letter. (1)

Subject: Complaint against misbehaviour.

Dear Sir,

This is to respectfully submit that I _____ (write) this letter with extreme pain and disgust against the misbehaviour of the government officials in the office.

- (ii) Read the given sentence from a health article. Identify the error and supply the correction in the sentence. (1)

You should get skin disease if you don't bathe everyday.

Use the given format for your response.

Error	Corrections

- (iii) Shreya wanted some information from Sneha about the location of the post office. (1)

Report Shreya's question.

Shreya said, "Do you know where the nearest post office is?"

- (iv) Read the dialogue between Divya and Arti, regarding buying a car. (1)

Divya: I am planning to buy a car.

Arti: Which car do you intend to buy?

Divya: I intend to buy the latest model of any popular company.

Select the correct option to complete the narration.

Divya told Arti that _____. Then Arti asked her which car she intended to buy. Divya said that she intended to buy the latest model of any popular company.

- (a) she was planning to buy a car (b) she plans to buy a car
(c) she will buy a car (d) she will be buying a car

- (v) Fill in the blank by choosing the correct option to complete the sentence. (1)

Do you want _____ (a/ an/ the) extension to finish _____ (a/an/ the) major project.

- (vi) Identify the error in the given sentence and supply the correction. (1)

After using the computer for a long time, looking into a distance for about five minutes relaxed the eyes.

Use the given format for your response.

Error	Correction

- (vii) Select the option that identifies the error and supplies the correction for the following line. (1)

Today, the number of people who enjoys winter sports is bigger than that of twenty years ago.

Option	Error	Correction
a.	the	the people
b.	people	the people
c.	enjoys	enjoy
d.	is	are

- (viii) Fill in the blank by choosing the correct option to complete an online update. (1)

The constellation they _____ to observe is clearly visible from here.

- (a) were going (b) are going (c) was going (d) is going

- (ix) Report the dialogue between Neha and Namita by completing the sentence. (1)

Neha : I'm really looking forward to the class picnic tomorrow.

Namita : Yes, after a long time we will be meeting our friends and teachers.

Neha told Namita that she was really looking forward to the class picnic the following day.

Namita agreed that after a long time _____.

(x) Complete the given narrative by filling in the blank with the correct option. (1)
 _____ Frank in Toronto?

- (a) Did you meet (b) Have you meet (c) Was you meeting (d) Will you met

(xi) Complete the line from a poem by filling the blank with the correct option. (1)

Now is the time to love, and better still,
 To serve our loved ones, over passing ill
 To rise triumphant : thus the perfect flower
 Of life.....to fruitage

- (a) come (b) shall come (c) came (d) had came

(xii) Identify the error in an online advertisement: (1)

Hindol Classes, New Delhi

If music is in your passion, we were the right choice for you.

Use the given format for your response.

Error	Correction

WRITING SKILLS (10 Marks)

4.A You are Raman / Ramya Singh, computer- in- charge of Modern Public School, Kanpur. You wish to buy 20 computers and computer accessories from HPC Computers, New Delhi. Draft a letter, in about 120 words, placing the order giving all the specifications of the product and its quality. (5)

OR

4. B You are Swarnim/ Swarnima Dey of 143, Palm Avenue, Kolkata. While walking home from school, you saw the flyers stuck all over the walls with the following message.

“Learn to swim- the best exercise your body can do”- College Square Swimming Club, Kolkata. You are interested to join a swimming club of repute in your town. Write a letter to the Secretary, College Square Swimming Club, Kolkata in not more than 120 words, enquiring about the details, about the membership and other terms and conditions of the club.

5.A The following flow chart has been taken from a literary magazine. (5)

How to write a great story

Step 1	Step 2	Step 3	Step 4	Step 5	Step 6
Before starting think about the ideas and the background of the topic, then choose one topic.	Find one excellent character and focus on it.	Be precise on what events you share, but don't describe it ; let the readers get involved.	Try to involve all the major senses like touch, smell, hearing, vision.	Use 'figures of speech' such as metaphors, allusions, similes, very carefully.	Treat adjectives and adverbs with proper attention.
				A great story is created.	← Step 7

Write a paragraph in about 120 words analyzing the process of writing a story.

You may begin like this:

The given flow chart provides information on the chronological method of writing a great story...?

You may end like this:

The last step is the final product of the writer's thought and creativity...

OR

5.B Read the points given below from a feedback section of a government website regarding problems faced by physically disabled people.

- Absence of ramps for wheelchairs
- Unclean toilets
- Unsuitable visiting timings. Tourist guides untrained in sign language
- Lack of braille – script tourist pamphlets
- Lack of empathy from fellow visitors and officials

Write a paragraph in about 120 words demarcating the problems they face at tourist places and include some suggestions as well.

You may begin like this:

Physically disabled people are as much a part of our society as any other individual...

You may end like this:

It is indeed our responsibility too to make sure we help them in whatever way fits best...

SECTION C: LITERATURE (40 MARKS)

6. **Read the extracts and answer the questions given below: (ANY ONE) (5)**

A. But for Valli, standing at the front door was every bit as enjoyable as any of the elaborate games other children played. Watching the street gave her many unusual experiences. The most fascinating thing of all was the bus that travelled between her village and the nearest town. It passed through her street each hour, once going to the town and once coming back. The sight of the bus, filled each time with a new set of passengers, was a source of unending joy for Valli.

(i) What was the most interesting thing for Valli? (1)

- (a) The children playing elaborate games.
- (b) Watching the street
- (c) The bus that travelled through her village.
- (d) All of the above

(ii) Read the following descriptions (a)- (c) and identify which one correctly corresponds to the extract. (1)

- (a) A debate is a formal discussion on a particular topic, usually with two or more people presenting different viewpoints and arguments.
- (b) A soliloquy is a speech given by a character alone on stage, which reveals their innermost thoughts and feelings to the audience.
- (c) A narrative, a story or an account of events, experiences whether true or fictitious.

(iii) How did Valli feel standing at the doorway? For what specific reason did Valli stand at the doorway? Answer in about 40 words. (2)

(iv) How was Valli different from children of her age? (1)

OR

B. She was not convinced. "No", she replied, "there is nothing more humiliating than to have a shabby air in the midst of rich women."

Then her husband cried out, "How stupid we are! Go and find your friend Madame Forrestier and ask her to lend you her jewels."

She uttered a cry of joy. 'It is true!' she said, "I had not thought of that."

(i) Why did she need the jewels? (1)

- (a) To go to a party of rich people
- (b) For a photoshoot
- (c) To get a replica made
- (d) For wearing them at home

(ii) What did Matilda's husband suggest her? (1)

(iii) Which word would correctly substitute 'said', in the given sentence from the extract? (1)

The old man said a prayer before breathing his last.

(iv) What kind of a person is Mme Loisel and why is she always unhappy? (Answer in about 40 words) (2)

7. **Read the following extracts and answer the following questions: (ANY ONE) (5)**

A. "Ink trickled down to the bottom of the household,
And little mouse Blink strategically mouseholed.
But up jumped Custard snorting like an engine,
Clashed his tail like irons in a dungeon,
With a clatter and a clank and a jangling squirm,
He went at the pirate like a robin at a worm.

(i) Write at least 2 onomatopoeic words used in the above extract. (1)

(ii) What is the poet's purpose in using the onomatopoeic words given in the extract? (1)

- (a) To emphasise the boldness of Custard
- (b) To introduce the character
- (c) To impress upon the readers
- (d) To portray Custard a coward

(iii) The extract mentions 'irons' in dungeons. According to this extract, what does 'irons' refer to? (1)

(iv) 'He went at the pirate like a robin at a worm.' Why has this comparison been used here? (2)
(Answer in 40 words.)

OR

B. The fog comes
on little cat feet.
It sits looking
over harbour and city
on silent haunches
and then moves on.

(i) The fog arrives and departs _____ (1)

- (a) by announcing its arrival
- (b) silently
- (c) loudly
- (d) Both (a) and (c)

- (ii) Which image does the poet compare to the fog? What are the similarities between that image and the fog? Answer in about 40 words. (2)
- (iii) The figure of speech prominent in the poem 'Fog' is metaphor- State-True/ False. (1)
- (iv) What is fog doing? (1)
8. Answer ANY FOUR of the following five questions in about 40-50 words. (4x3=12)
- (i) In the poem, 'The Trees', the process of "moving out" was tedious for the trees. Support the statement with reference to the poem.
- (ii) Without the assistance of the airhostess, the narrator could not have transported Mijbil from Basra to London safely. Comment.
- (iii) What made the woman in the control centre look at the narrator strangely?
(The Black Aeroplane – Two Stories About Flying)
- (iv) In the play, 'The Proposal', in what manner does Natalya and Chubukov insult Lomov for not being a good hunter?
- (v) The tiger in the poem, 'A Tiger in the Zoo' has some obvious limitations .Describe them in contrast to its natural habitat.
9. Answer ANY TWO of the following three questions in about 40-50 words: (2x3=6)
- (i) How did one old book of nursery rhymes save the Earth from a Martian invasion?
- (ii) Why was Horace Danby sure that his robbery at Shotover Grange would be a successful one?
- (iii) Ausable was always one step ahead of everyone. Highlight any two instances from 'The Midnight Visitor' when this holds true.
10. Answer ANY ONE of the following questions. (1x6=6)
- A. Say not in grief that she is no more
But say in thankfulness that she was
A death is not the extinguishing of a light,
But the putting out of the
Lamp because the dawn has come
- These lines written by Tagore certainly reaffirm that a little help and guidance to those who are experiencing grief may help them understand and overcome it. It is a big relief for the grieving persons if support and care are extended to them. Explain citing examples from the chapter "The Sermon at Benares" in about 120 words.
- You may begin this way:**
According to Gautama Buddha, the world is affected by suffering, death and decay. Kisa Gotami suffered due to the death of her beloved son... went to Gautama Buddha who relieved her ...
- OR**
- B. Imagine Anne Gregory grows up to be a motivational speaker. As Anne Gregory, write a short speech on the importance of loving oneself in about 120 words. (For Anne Gregory)
- You may begin this way:**
Dear friends
The importance of believing in oneself can never be overstated. It becomes most important therefore, to love oneself. I learnt this as a young teen, the day a young man pointed out that...
11. Answer ANY ONE of the following questions. (1x6=6)
- (A) Bholi chose a dignified life of service rather than surrendering herself to a greedy old man for the rest of her life. Education provides the required stimulus to overcome one's personal barriers. Education gave her strength, knowledge and understanding. Explain the role of education in shaping the life of a child with respect to the lesson 'Bholi'. Answer in about 120 words.
- OR**
- (A) "Success is failure turned inside out". Prove the statement with instances from the journey taken by Richard Ebright from losing at the Science Fair to winning at the International Fair. (The Making of a Scientist) Answer in about 120 words.



सामान्य निर्देश :-

- इस प्रश्नपत्र में दो खण्ड हैं - खण्ड 'अ' और खण्ड 'ब'।
- खंड 'अ' में वस्तुपरक प्रश्न पूछे गए हैं। दिए गए निर्देशों का पालन करते हुए प्रश्नों के उत्तर दीजिए।
- खण्ड 'ब' में वर्णनात्मक प्रश्न पूछे गए हैं, आंतरिक विकल्प भी दिए गए हैं।
- निर्देशों को बहुत सावधानी से पढ़िए और उनका पालन कीजिए।
- दोनों खण्डों में कुल 18 प्रश्न हैं। दोनों खण्डों के प्रश्नों के उत्तर देना अनिवार्य है।
- यथासंभव दोनों खण्डों के प्रश्नों के उत्तर क्रमशः लिखिए।

खण्ड - 'अ' (वस्तुपरक प्रश्न)

प्रश्न 1. निम्नलिखित गद्यांश को ध्यानपूर्वक पढ़कर इसके आधार पर सर्वाधिक उपयुक्त उत्तर वाले विकल्प चुनकर लिखिए -

(1x5=5)

विनम्रता शोषण की जननी है। समाज में जितनी विषमता होगी, सामान्यतया शोषण उतना ही अधिक होगा। चूँकि हमारे देश में सामाजिक, आर्थिक, शैक्षणिक व सांस्कृतिक असमानताएँ अधिक हैं जिसकी वजह से एक व्यक्ति एक स्थान पर शोषक तथा वही दूसरे स्थान पर शोषित होता है चूँकि जब बात उपभोक्ता संरक्षण की हो तब पहला प्रश्न यह उठता है कि उपभोक्ता किसे कहते हैं ? या उपभोक्ता की परिभाषा क्या है ? सामान्यतः उस व्यक्ति या व्यक्ति समूह को उपभोक्ता कहा जाता है जो सीधे तौर पर किन्हीं भी वस्तुओं अथवा सेवाओं का उपयोग करते हैं। इस प्रकार सभी व्यक्ति किसी न किसी रूप में शोषण का शिकार अवश्य होते हैं।

हमारे देश में ऐसे अशिक्षित, सामाजिक एवं आर्थिक रूप से दुर्बल अशक्त लोगों की भीड़ है जो शहर की संकीर्ण बस्तियों में, फुटपाथ पर, सड़क तथा रेलवे लाइन के किनारे झोपड़ी डालकर अथवा किसी भी अन्य शहर से अपना जीवन यापन कर रहे हैं। वे दुनिया के सबसे बड़े प्रजातांत्रिक देशों की समाजोपयोगी उर्ध्वमुखी योजनाओं से वंचित हैं, जिन्हें आधुनिक सफेदपोशों, व्यापारियों, नौकरशाहों तथाकथित बुद्धिजीवी वर्ग ने मिलकर बाँट लिया है। सही मायने में शोषण व्यवसाय की देन है।

उपभोक्ता शोषण का तात्पर्य केवल उत्पादकता व व्यापारियों द्वारा किए गए शोषण से ही लिया जाता है जबकि इस क्षेत्र में वस्तुएँ एवं सेवाएँ दोनों ही सम्मिलित हैं।

- (1) शोषण की जननी है -
(क) आर्थिक विषमता (ख) सामाजिक विषमता (ग) शैक्षणिक विषमता (घ) उपर्युक्त सभी
- (2) उपभोक्ता है -
(क) वस्तुओं का उपभोग करने वाला (ख) सेवाओं का उपभोग करने वाला
(ग) वस्तुओं एवं सेवाओं का उपभोग करने वाला (घ) उपभोक्ता कानून पालन करने वाला

- (3) निम्नलिखित कथनों पर विचार करें

कथन :

- (1) समाज में जितनी विषमता होगी शोषण उतना ही कम होगा।
(2) भारत में सामाजिक, आर्थिक तथा सांस्कृतिक असमानताएँ बहुत कम है।
(3) एक व्यक्ति एक स्थान पर शोषक तथा दूसरे स्थान पर शोषित होता है।

उपर्युक्त कथनों में से कौन-सा/से कथन सही है/हैं

- (क) केवल कथन (3) सही है (ख) कथन (1) तथा (3) सही हैं
(ग) कथन (3) तथा (2) सही हैं (घ) कथन (1), (2) तथा (3) तीनों सही हैं

- (4) निम्नलिखित कथन (A) तथा कारण (R) को पढ़कर दिए गए विकल्पों में से कोई एक सही विकल्प चुनें।

कथन (A) : विषमता शोषण की जननी है।

कारण (R) : समाज में धन, धर्म, सत्ता आदि के आधार पर लोग बँटे हुए हैं। समाज का समर्थ व्यक्ति असमर्थ व्यक्तियों का शोषण कर स्वयं को बड़ा साबित करता है। इस पर विषमता शोषण को जन्म देती है।

(क) कथन (A) तथा कारण (R) दोनों सही हैं तथा कारण (R) कथन (A) की सही व्याख्या करता है।

(ख) कथन (A) गलत है परंतु कारण (R) सही है।

(ग) कथन (A) तथा कारण (R) दोनों गलत हैं।

(घ) कथन (A) सही है परंतु कारण (R) उसकी गलत व्याख्या करता है।

- (5) निम्नलिखित कथन (A) तथा कारण (R) को पढ़कर दिए गए विकल्पों में से कोई एक सही विकल्प चुनें।

कथन (A) : "उर्ध्वमुखी योजनाओं से वंचित हैं।" कथन का आशय है-

कारण (R) : भारत में गरीब व अधिकारहीन लोग अधिकारों के प्रति जागरूक नहीं हैं।

विकल्प :

(क) कथन (A) तथा कारण (R) दोनों सही हैं तथा कारण (R) कथन (A) की सही व्याख्या करता है।

(ख) कथन (A) गलत है परंतु कारण (R) सही है।

(ग) कथन (A) तथा कारण (R) दोनों गलत हैं।

(घ) कथन (A) सही है परंतु कारण (R) उसकी गलत व्याख्या करता है।

प्रश्न 2. निम्नलिखित गद्यांश को ध्यानपूर्वक पढ़कर इसके आधार पर सर्वाधिक उपयुक्त उत्तर वाले विकल्प चुनकर लिखिए –

(1x5=5)

राष्ट्र केवल जमीन का टुकड़ा ही नहीं बल्कि हमारी सांस्कृतिक विरासत होती है जो हमें अपने पूर्वजों के रूप में प्राप्त होती है। जिसमें बड़े होते हैं, शिक्षा पाते हैं और साँस लेते हैं—हमारा अपना राष्ट्र कहलाता है और उसकी पराधीनता व्यक्ति की परतंत्रता की पहली सीढ़ी होती है। ऐसे ही स्वतंत्र राष्ट्र की सीमाओं में जन्म लेने वाले व्यक्ति का धर्म, जाति, भाषा या संप्रदाय कुछ भी हो, आपस में स्नेह होना स्वाभाविक है। राष्ट्र के लिए जीना और काम करने की भावना राष्ट्रीयता कहलाती है।

जब व्यक्ति किसी दूसरे व्यक्ति से धर्म, जाति, कुल आदि के आधार पर व्यवहार करता है तो उसकी दृष्टि संकुचित हो जाती है। राष्ट्रीयता की अनिवार्य शर्त है—देश को प्राथमिकता, भले ही हमें 'स्व' को मिटाना पड़े। महात्मा गाँधी, तिलक, सुभाषचन्द्र बोस आदि के कार्यों से पता चलता है कि देश के कारण उन्हें अनगिनत कष्ट उठाने पड़े, किंतु वे अपने निश्चय पर अटल रहे। व्यक्ति को निजी अस्तित्व कायम रखने के लिए पारस्परिक सभी सीमाओं की बाधाओं को भुलाकर कार्य करना चाहिए तभी उसकी नीतियाँ-रीतियाँ राष्ट्रीय कही जा सकती हैं।

- (1) 'स्व' से क्या अभिप्राय है ?

(क) सबका	(ख) अपना	(ग) पराया	(घ) सार्वजनिक
----------	----------	-----------	---------------
- (2) लेखक ने 'स्व' को मिटाना क्यों आवश्यक बताया है ?

(क) राष्ट्र के विकास के लिए	(ख) संकुचित दृष्टिकोण से बचाने के लिए
(ग) आपसी स्नेह बढ़ाने के लिए	(घ) उपर्युक्त सभी के लिए
- (3) निम्नलिखित कथनों पर विचार करें
कथन :

(1) राष्ट्र केवल जमीन का टुकड़ा है।
(2) राष्ट्र हमारी सांस्कृतिक विरासत है।
(3) सांस्कृतिक विरासत हमें अपने पूर्वजों से प्राप्त होती है।
(4) जिसमें हम पलते-बढ़ते हैं वह राष्ट्र कहलाता है।

उपर्युक्त कथनों में से कौन-सा/से कथन सही है/हैं

(क) कथन (1) तथा (4) सही हैं।	(ख) केवल कथन (2) सही है।
(ग) कथन (2), (3) तथा (4) सही हैं।	(घ) केवल कथन (3) सही है।
- (4) निम्नलिखित कथन (A) तथा कारण (R) को पढ़कर दिए गए विकल्पों में से कोई एक सही विकल्प चुनिए—
कथन (A) : राष्ट्रीयता की अनिवार्य शर्त है-देश की प्राथमिकता।
कारण (R) : राष्ट्र के लिए जीना और काम करना, उसकी स्वतंत्रता तथा विकास के लिए कुछ करने की भावना राष्ट्रीयता है।

(क) कथन (A) तथा कारण (R) दोनों सही हैं तथा कारण (R) कथन (A) की सही व्याख्या करता है।
(ख) कथन (A) गलत है परंतु कारण (R) सही है।
(ग) कथन (A) तथा कारण (R) दोनों गलत हैं।
(घ) कथन (A) सही है परंतु कारण (R) उसकी गलत व्याख्या करता है।
- (5) निम्नलिखित कथनों पर विचार करें
कथन :

(1) व्यक्तिगत स्वार्थ एवं राष्ट्रीय भावना परस्पर विरोधी है।
(2) व्यक्तिगत स्वार्थ के कारण लोग राष्ट्र के बारे में सोचते हैं।
(3) जब व्यक्तिगत स्वार्थ त्याग कर देश के लिए सोचता है तो देश आगे बढ़ता है।

उपर्युक्त कथनों में से कौन-सा/से कथन सही है/हैं
विकल्प :

(क) कथन (1) तथा (3) सही है	(ख) कथन (1), (2) तथा (3) तीनों सही हैं
(ग) कथन (2) तथा (3) सही हैं	(घ) कथन (1) तथा (2) सही हैं

प्रश्न 3. निम्नलिखित 'पदबंध' आधारित पाँच बहुविकल्पीय प्रश्नों में से किन्हीं चार प्रश्नों के उत्तर दीजिए— (1x4=4)

- (1) 'ततारा की तलवार में अद्भुत दैवीय शक्ति थी।' रेखांकित पदबंध का भेद है —

(क) क्रिया पदबंध	(ख) विशेषण पदबंध	(ग) सर्वनाम पदबंध	(घ) संज्ञा पदबंध
------------------	------------------	-------------------	------------------
- (2) 'जो नहीं जा सके हैं, उन्होंने यहाँ-वहाँ डेरा डाल लिया है।' रेखांकित पदबंध का भेद है —

(क) क्रिया पदबंध	(ख) संज्ञा पदबंध	(ग) सर्वनाम पदबंध	(घ) क्रिया-विशेषण पदबंध
------------------	------------------	-------------------	-------------------------
- (3) 'सुलेमान अपनी मंज़िल की ओर बढ़ गए।' रेखांकित पदबंध का भेद है —

(क) क्रिया पदबंध	(ख) विशेषण पदबंध	(ग) क्रिया-विशेषण पदबंध	(घ) सर्वनाम पदबंध
------------------	------------------	-------------------------	-------------------
- (4) 'ततारा की तलवार एक विलक्षण रहस्य थी।' इस वाक्य से संज्ञा पदबंध छाँटिए —

(क) तलवार एक	(ख) ततारा की तलवार	(ग) रहस्य थी	(घ) इनमें से कोई नहीं
--------------	--------------------	--------------	-----------------------
- (5) 'दरिया पर जाओ तो उसे सलाम किया करो।' इस वाक्य में सर्वनाम पदबंध छाँटिए —

(क) दरिया पर	(ख) दरिया पर जाओ तो उसे	(ग) किया करो	(घ) सलाम
--------------	-------------------------	--------------	----------

- प्रश्न 4. निर्देशानुसार 'रचना के आधार पर वाक्य-भेद' पर आधारित पाँच बहुविकल्पीय प्रश्नों में से किन्हीं चार प्रश्नों के उत्तर दीजिए – (1x4=4)
- (1) 'अब तक हरिहर काका सब कुछ समझ चुके थे।' रचना के आधार पर वाक्य भेद है—
 (क) सरल वाक्य (ख) संयुक्त वाक्य (ग) मिश्र वाक्य (घ) सामान्य वाक्य
- (2) निम्न में से संयुक्त वाक्य है—
 (क) राजकपूर एक संवेदनशील कलाकार थे। (ख) वह युवती वामीरो लपाती गाँव में रहती थी।
 (ग) ये वज़ीर अली आदमी है या भूत (घ) वह घुड़सवार एक जाँबाज़ सिपाही था।
- (3) सूची I को सूची II से सुमेलित कीजिए।

सूची I		सूची II	
(क)	भाई साहब और मैं कनकौआ लूटने के लिए दौड़ रहे थे।	(i)	संयुक्त वाक्य
(ख)	क्योंकि मुझे और भाई साहब को कनकौआ लूटना था इसलिए हम दौड़ रहे थे।	(ii)	सरल वाक्य
(ग)	मुझे कनकौआ लूटना था और भाई साहब मेरे साथ दौड़ रहे थे।	(iii)	मिश्र वाक्य

विकल्प :

- (1) (क) - (iii), (ख) - (i) और (ग) - (ii) (2) (क) - (ii), (ख) - (iii) और (ग) - (i)
 (3) (क) - (ii), (ख) - (i) और (ग) - (iii) (4) (क) - (ii), (ख) - (i) और (ग) - (iii)
- (4) निम्न में से मिश्र वाक्य है –
 (क) यदि बड़े भाई साहब सोच-समझ कर अध्ययन करते, तो अवश्य सफल होते।
 (ख) पेड़ों को रास्ते से हटाना शुरु कर दिया है।
 (ग) लोग टोलियाँ बनाकर मैदान में घूमने लगे।
 (घ) मैं मंदिर भी जाऊँगा और भजन भी सुनूँगा।
- (5) 'कबीर जी ने सरल और सधुक्कड़ी भाषा का प्रयोग किया है।' रचना के आधार पर वाक्य भेद है—
 (क) मिश्र वाक्य (ख) विधानवाचक वाक्य (ग) सरल वाक्य (घ) संयुक्त वाक्य
- प्रश्न 5. निर्देशानुसार समास पर आधारित पाँच बहुविकल्पीय प्रश्नों में से किन्हीं चार प्रश्नों के उत्तर दीजिए – (1x4=4)

- (1) 'शोकमग्न' शब्द में कौन-सा समास है—
 (क) तत्पुरुष समास (ख) अव्ययीभाव समास (ग) कर्मधारय समास (घ) द्विगु समास
- (2) 'चौराहा' शब्द का सही समास-विग्रह क्या होगा ?
 (क) चार राहों वाला – तत्पुरुष समास (ख) चार हैं जो राहें – कर्मधारय समास
 (ग) चार राहों का समाहार – द्विगु समास (घ) राहों में चार है जो – द्वंद्व समास
- (3) निम्नलिखित युग्मों पर विचार कीजिए –
- | | |
|----------------|----------------------|
| समस्तपद | समास |
| (क) कमलनयन | (i) तत्पुरुष समास |
| (ख) देवमूर्ति | (ii) अव्ययीभाव समास |
| (ग) स्त्रीरत्न | (iii) बहुब्रीहि समास |
| (घ) वचनमृत | (iv) कर्मधारय समास |

उपर्युक्त युग्मों में से कौन-से सही सुमेलित हैं ?

1. (क) - (ii) 2. (ख) - (i) 3. (ग) - (iv) 4. (क) - (iv)

- (4) 'तिरंगा' समस्तपद का विग्रह होगा –
 (क) तीन-रंग (ख) तीन हैं रंग जिसके – गणेश
 (ग) तीन रंगों वाला है जो (घ) इनमें से कोई नहीं जो
- (5) 'स्वर्ग-नरक' समस्तपद का का विग्रह एवं भेद होगा –
 (क) स्वर्ग अथवा नरक – द्विगु समास
 (ख) स्वर्ग और नरक – द्वंद्व समास
 (ग) स्वर्गरूपी नरक – तत्पुरुष समास
 (घ) स्वर्ग है जो नरक – बहुब्रीहि समास

- प्रश्न 6. निर्देशानुसार 'मुहावरे' पर आधारित छः बहुविकल्पीय प्रश्नों में से किन्हीं चार प्रश्नों के उत्तर दीजिए— (1x4=4)

- (1) 'सूक्ति बाण चलाना' मुहावरे का अर्थ है—
 (क) घमंड करना (ख) विरोध करना (ग) व्यंग्यात्मक कथन (घ) बेराह चलना
- (2) 'अंधे के हाथ बटेर लगना' मुहावरे का अर्थ है—
 (क) लाभ होना (ख) थोड़े में बहुत कुछ कह देना
 (ग) भाग्यवश अच्छी वस्तु प्राप्त होना (घ) अंधे व्यक्ति को बटेर मिलना
- (3) वर्तमान व्यवस्था के विरोध में मीडिया में। (उपर्युक्त मुहावरे से रिक्त स्थान की पूर्ति कीजिए)
 (क) आसमान सिर पर उठाने लगा है (ख) आवाज़ उठने लगी है
 (ग) उल्टी गंगा बहने लगी है (घ) उन्नीस-बीस होने लगा है
- (4) 'खरी-खोटी सुनाना' के लिए उपयुक्त मुहावरा है—
 (क) आपा खोना (ख) आड़े हाथों लेना (ग) हावी होना (घ) दो से चार बनाना
- (5) रेखांकित अंश के लिए कौन-सा मुहावरा प्रयुक्त करना उचित रहेगा—
 'बड़े भाई साहब को आगे बढ़ने का कोई उपाय नहीं मिल रहा था।'
 (क) राह न सूझना (ख) सुराग न मिलना (ग) हिम्मत टूटना (घ) सिर फिरना

- (6) मुहावरे और अर्थ के उचित मेल वाले विकल्प का चयन कीजिए –
 (क) तूती बोलना – मुसीबत में फँसना (ख) होश उड़ जाना – परिश्रम करना
 (ग) बाट जोहना – इंतजार करना (घ) पापड़ बेलना – सिर फिरना
- प्रश्न 7. निम्नलिखित पद्यांश को पढ़कर पूछे गए प्रश्नों के उत्तर के लिए सही विकल्प का चयन कीजिए – (1x5=5)
- कोई कहीं सहायक न मिले
 तो अपना बल पौरुष न हिले;
 हानि उठानी पड़े जगत में लाभ अगर वंचना रही
 तो भी मन में न मानूँ क्षय।।
 मेरा त्राण करो अनुदित तुम यह मेरी प्रार्थना नहीं
 बस इतना होवे (करुणामय)
- (1) कवि ईश्वर से क्या कामना कर रहा है ?
 (क) सहायक मिलने की (ख) धन ऐश्वर्य की
 (ग) मुसीबतों से बचाव की (घ) आत्मविश्वास में कमी न आने की
- (2) कवि किससे हार नहीं मानना चाहता है ?
 (क) ईश्वर से (ख) मित्र से (ग) मन से (घ) शत्रु से
- (3) कवि ने करुणामय किसे कहा है ?
 (क) स्वयं को (ख) सहायक को (ग) ईश्वर को (घ) जगत को
- (4) निम्नलिखित वाक्यों को ध्यानपूर्वक पढ़िए –
 (1) कवि चाहता है कि जीवन में मुसीबत आने पर कोई उसे सहारा दे।
 (2) कवि का पौरुष न डगमगाए, वह प्रभु से ऐसी कामना करता है।
 (3) हानि होने पर कवि लाभ की कामना करता है।
 (4) कवि विचलित होकर अपना पराक्रम कम नहीं होने देना चाहता है।
 (5) कवि रोगमुक्त रहने एवं रक्षा करने के लिए प्रभु से प्रार्थना नहीं करता है।
 पद्यांश से मेल खाते वाक्यों के लिए उचित विकल्प चुनिए –
 (क) (1), (2) और (4) (ख) (2), (3) और (4) (ग) (1), (3) और (5) (घ) (2), (4) और (5)
- (5) कवि संकटों का सामना किसकी सहायता से करना चाहता है ?
 (क) मित्रों की सहायता से (ख) ईश्वर की कृपा से (ग) स्वयं से (घ) परिवार की सहायता से
- प्रश्न 8. निम्नलिखित प्रश्नों के उत्तर देने के लिए उचित विकल्प का चयन कीजिए – (1x2=2)
- (1) कबीरदास जी के अनुसार निंदक व्यक्तियों को सदैव अपने पास रखना चाहिए, क्योंकि
 (क) उससे हमें प्रसन्नता मिलती है (ख) वे हमारे मित्र होते हैं
 (ग) उनकी निकटता हमारे स्वभाव को स्वच्छ एवं पवित्र बना देती है (घ) इनमें से कोई नहीं
- (2) 'गिरिवर के उर से उठ-उठकर, उच्चकांक्षाओं से तरुवर' पंक्ति का भाव है –
 (क) पहाड़ों पर ऊँचे-ऊँचे पेड़ खड़े हैं
 (ख) पहाड़ों के ऊँचे-ऊँचे पेड़ वर्षा की प्रतीक्षा कर रहे हैं
 (ग) पहाड़ों पर उगे विशाल वृक्षों के मन में ऊँची-ऊँची आकांक्षाएँ छिपी हैं
 (घ) पहाड़ आकाश में उड़ना चाहते हैं
- प्रश्न 9. निम्नलिखित गद्यांश को पढ़कर पूछे गए प्रश्नों के उत्तर के लिए सही विकल्प का चयन कीजिए – (1x5=5)
- बाहर बेढब-सा एक मिट्टी का बरतन था। उसमें पानी भरा हुआ था। हमने अपने हाथ-पाँव उस पानी से धोए।
 तौलिए से पोंछे और अंदर गए। अंदर 'चाजीन' बैठा था। हमें देखकर वह खड़ा हुआ। कमर झुकाकर उसने हमें
 प्रणाम किया। दो...झो... (आइए, तशरीफ लाइए) कहकर स्वागत किया। बैठने की जगह हमें दिखाई। अंगीठी
 सुलगाई। उस पर चायदानी रखी। बगल के कमरे में जाकर कुछ बरतन ले आया। तौलिए से बरतन साफ किए।
 सभी क्रियाएँ इतनी गरिमापूर्ण ढंग से की कि उसकी हर भंगिमा से लगता था मानो जयजयवंती के सुर गूँज रहे
 हों। वहाँ का वातावरण इतना शांत था कि चायदानी के पानी का खदबदाना भी सुनाई दे रहा था।
- (1) चाजीन ने कौन-सी क्रिया गरिमापूर्ण ढंग से की ?
 (क) अतिथियों का स्वागत (ख) अंगीठी सुलगाना (ग) चाय के बर्तन लाना (घ) ये सभी
- (2) पर्णकुटी के बाहर मिट्टी का बर्तन रखने का क्या उद्देश्य था ?
 (क) चाय के बर्तन धोए जाने के लिए (ख) प्रत्येक व्यक्ति पानी से हाथ-मुँह धोकर कुटिया के अंदर प्रवेश करे
 (ग) किसी को भी पानी की कमी न हो (घ) पानी का महत्त्व बताने के लिए
- (3) चाजीन ने लेखक का स्वागत गरिमापूर्ण ढंग से किस प्रकार किया ?
 (क) खड़े होकर (ख) झुककर प्रणाम करके (ग) दो-झो कहकर (घ) ये सभी
- (4) "उसकी हर भंगिमा से लगता था मानो जयजयवंती के सुर गूँज रहे हों।" पंक्ति में 'उसकी' शब्द किसके
 लिए प्रयुक्त हुआ है ?
 (क) लेखक के मित्र (ख) स्वयं लेखक (ग) चाजीन (घ) वहाँ उपस्थित अन्य व्यक्ति
- (5) निम्नलिखित कथन (A) तथा कारण (R) को ध्यानपूर्वक पढ़िए। उसके बाद दिए गए विकल्पों में से कोई एक
 सही विकल्प चुनिए।
 कथन (A) : चाजीन ने सभी क्रियाएँ गरिमापूर्ण ढंग से की थीं।
 कारण (R) : यह जापानियों के झेन-परंपरा की देन है।
 (क) कथन (A) तथा कारण (R) दोनों गलत हैं।
 (ख) कथन (A) गलत है किंतु कारण (R) सही है।
 (ग) कथन (A) और कारण (R) दोनों सही हैं और कारण (R) कथन (A) की सही व्याख्या करता है।
 (घ) कथन (A) सही है लेकिन कारण (R) गलत है।

- प्रश्न 10. निम्नलिखित प्रश्नों के उत्तर देने के लिए उचित विकल्प का चयन कीजिए – (1x2=2)
- (1) 26 जनवरी, 1931 के दिन कलकत्ता में झंडा फहराने की क्या तैयारी हो रही थी ?
- (क) मकान सजाए जा रहे थे (ख) पुलिस पूरी ताकत से प्रदर्शन कर रही थी
(ग) प्रत्येक भाग में झंडे लगाए गए थे (घ) ये सभी
- (2) लेखक बड़े भाई साहब की किस बात से पूर्णतः सहमत हैं ?
- (क) बड़े भाई साहब को अनुभव अधिक होने से उनमें समझ अधिक है
(ख) बड़े भाई साहब अध्ययन में होशियार हैं
(ग) बड़े भाई साहब लेखक से बहुत प्यार करते हैं
(घ) उपर्युक्त में से कोई नहीं

खण्ड – 'ब' (वर्णनात्मक प्रश्न)

- प्रश्न 11. निम्नलिखित प्रश्नों में से किन्हीं दो प्रश्नों के उत्तर लगभग 60 शब्दों में दीजिए— (3x2=6)
- (क) वज़ीर अली अंग्रेजों से नफरत करता है तथा उन्हें वह किसी भी कीमत पर देश से बाहर निकालना चाहता है और देश को उनसे आज़ादी दिलाना चाहता है। 'कारतूस' पाठ के आधार पर वज़ीर अली के संघर्ष को लिखिए।
- (ख) चाय पीने की प्रक्रिया ने लेखक के दिमाग की गति धीमी कैसे कर दी ? 'पतझर में टूटी पत्तियाँ' पाठ के आधार पर उत्तर दीजिए।
- (ग) छोटे भाई के मन में बड़े भाई साहब के प्रति श्रद्धा क्यों उत्पन्न हुई थी ? 'बड़े भाई साहब' पाठ के आधार पर उत्तर दीजिए।
- प्रश्न 12. निम्नलिखित प्रश्नों में से किन्हीं दो प्रश्नों के उत्तर लगभग 60 शब्दों में दीजिए – (3x2=6)
- (क) 'मनुष्यता' पाठ में कवि ने किन-किन महान दानवीर राजाओं का उल्लेख कर मनुष्यता शब्द के वास्तविक अर्थ को परिभाषित किया है। विस्तार से लिखिए।
- (ख) "मीरा की रचनाओं में पूर्ण समर्पित भक्ति-भावना निहित है।" अपने शब्दों में इस कथन की पुष्टि 'मीरा के पद' के आधार पर लगभग 60-70 शब्दों में कीजिए।
- (ग) 'कर चले हम फिदा' कविता में हिमालय पर्वत को किसके प्रतीक रूप में बताया गया है? 'सर पर कफ़न बाँधना' किस ओर संकेत करता है ? स्पष्ट कीजिए।
- प्रश्न 13. निम्नलिखित प्रश्नों में से किन्हीं दो प्रश्नों के उत्तर लगभग 60 शब्दों में दीजिए – (3x2=6)
- (क) महंत द्वारा हरिहर काका का अपहरण किया जाना, महंत के चरित्र की किस सच्चाई को सामने लाता है ? टाकुरबाड़ी जैसी संस्थाओं से कैसे बचा जा सकता है ? विचार व्यक्त कीजिए।
- (ख) 'सपनों के-से दिन' पाठ के आधार पर बताइए कि स्कूल जाने के प्रति लेखक के मन में निराशा के भाव थे, परन्तु धीरे-धीरे स्कूल के प्रति उसका आकर्षण बढ़ने लगा, ऐसा कब संभव हुआ ?
- (ग) जिस दिन इफ़न की दादी का निधन हुआ था, उस दिन दोनों दोस्त बहुत रोए थे। खासतौर से टोपी को अपना जीवन इफ़न की दादी के बिना अकेला लगने लगा और वह बेचैन रहने लगा। 'टोपी शुक्ला' पाठ के आधार पर बताइए कि टोपी को अपनी दादी से लगाव न होकर इफ़न की दादी से लगाव क्यों था ?
- प्रश्न 14. निम्नलिखित में से किसी एक विषय पर संकेत-बिन्दुओं के आधार पर लगभग 100 शब्दों में अनुच्छेद लिखिए –(5x1=5)

(क) गया समय फिर हाथ नहीं आता	(ख) शिक्षक और छात्र का संबंध	(ग) साक्षरता अभियान
• समय ही जीवन है	• शिक्षकों का समाज के लिए महत्त्व	• साक्षरता का अर्थ
• समय के दुरुपयोग से हानि	• शिक्षकों एवं छात्र के बीच मधुर संबंध की महत्ता	• साक्षरता : एक आवश्यकता
• समय का सदुपयोग	• शिक्षकों के प्रति छात्रों की भावना	• साक्षरता का महत्त्व
• उपसंहार	• उपसंहार	

- प्रश्न 15. डेंगू और मलेरिया के बढ़ते प्रकोप को देखते हुए चिकित्सालयों में अपर्याप्त चिकित्सा सुविधाओं की ओर ध्यान आकर्षित कराने हेतु राज्य के स्वास्थ्य मंत्री को लगभग 100 शब्दों में पत्र लिखिए। (5)

अथवा

दैनिक समाचार-पत्र के संपादक के नाम मिलावटी दूध की बिक्री के कारण लोगों के स्वास्थ्य पर असर पड़ रहा है। इसके संबंध में लगभग 80-100 शब्दों में पत्र लिखिए।

- प्रश्न 16. विद्यालय के प्रधानाचार्य की ओर से विद्यार्थियों को विद्यालय परिसर में मोबाइल फोन न लाने संबंधी आदेश देते हुए लगभग 60 शब्दों में सूचना तैयार कीजिए। (4)

अथवा

आप अपने विद्यालय की संगीत अकादमी के सचिव हैं। विद्यालय की ओर से होने वाली अन्तर्सदनीय संगीत प्रतियोगिता की सूचना तैयार कीजिए।

- प्रश्न 17. पेन बनाने वाली किसी प्रसिद्ध कंपनी की ओर से लगभग 40 शब्दों में एक आकर्षक विज्ञापन तैयार कीजिए। (3)

अथवा

एक कोचिंग संस्थान की ओर से लगभग 40 शब्दों में एक आकर्षक विज्ञापन तैयार कीजिए।

- प्रश्न 18. 'आगे कुआँ पीछे खाई' उक्ति को आधार बनाकर लगभग 100 शब्दों में एक लघुकथा लिखिए। (5)

अथवा

आपने किसी कंपनी से ऑनलाइन सामान मँगवाया था पर वह खराब निकला। कंपनी को सामान की जानकारी देते हुए सही सामान भेजने हेतु एक ई-मेल लिखिए। (शब्द-सीमा लगभग 100 शब्द)



समय: होरात्रयम्
कक्षा- दशमी

दिल्ली-पब्लिक-स्कूल, भिलाईनगरम्
पूर्वपरिषदीय-परीक्षा- 2023-24
विषय: - संस्कृतम्

दिनाङ्क: 13.12.2023
पूर्णाङ्क: 80

सामान्य-निर्देशाः

- (i) अस्मिन् प्रश्नपत्रे चत्वारः खण्डाः सन्ति।
(ii) अस्मिन् प्रश्नपत्रे 18 प्रश्नाः सन्ति।
(iii) प्रश्नानाम् उत्तराणि क्रमानुसारं संस्कृतभाषायामेव लेखनीयानि।
'क' खण्डः - अपठित-अवबोधनम् - 10 अङ्काः
'ख' खण्डः - रचनात्मकं कार्यम् - 15 अङ्काः
'ग' खण्डः - अनुप्रयुक्तव्याकरणम् - 25 अङ्काः
'घ' खण्डः - पठितावबोधनम् - 30 अङ्काः

'क' खण्डः - अपठित-अवबोधनम् - 10 अङ्काः

1. अधोलिखितम् अनुच्छेदं पठित्वा प्रदत्तप्रश्नान् संस्कृतेन उत्तरत-

साहित्यं समाजस्य न केवलं दर्पणः भवति, अपितु निर्देशकम् अपि। अतः उत्कृष्टसाहित्यस्य दृष्ट्या संस्कृतसाहित्यं विश्वस्य कृते अमूल्यः उपहारः अस्ति। तथा अस्य उपहारस्य आनन्दप्राप्तिः संस्कृतभाषाज्ञानं विना असम्भवा एव। इयं केवलं न देवभाषा अपितु जनभाषा अपि आसीत्। अनया जीवनस्य किमपि क्षेत्रम् अवशिष्टं न अस्ति। नासावैज्ञानिकैः निष्कर्षरूपेण 'सङ्गणकाय सर्वोत्कृष्टा भाषा संस्कृतम्' इति स्वीकृतिः अस्याः वैज्ञानिकतां प्रमाणीकर्तुं पर्याप्ता अस्ति। विश्वस्य अनेकाः भाषाः जनयित्री संस्कृतभाषा हिन्दीसहित-अनेकप्रान्तीयभाषाणां जननी अस्ति। अस्मिन्नेव सन्दर्भे एकदा काशी-हिन्दू-विश्वविद्यालय-वाराणस्यां दीक्षान्तसमारोहे भारतस्य दक्षिण-भारतीय-मुख्य-न्यायाधीशः अवदत्- 'भारतस्य राष्ट्रभाषा काचित् दक्षिणभारतीयभाषा न भूत्वा 'संस्कृतम्' एव भवितुम् शक्नोति।' विदेशेषु वैदिकगणितस्य शास्त्रीय-संगीतस्य वेदमन्त्राणां तीव्रगत्या आवश्यकता अनुभूयते जनैः इति भारतस्य कृते गर्वस्य विषयः। संस्कृतेन एव - 'भारतदेशः विश्वगुरुः' कथ्यते।

- I. एकपदेन उत्तरत- (केवलं प्रश्नद्वयम्) (1x2=2)
(i) समाजस्य निर्देशकं किमस्ति?
(ii) केनैव भारतदेशः विश्वगुरुः कथ्यते?
(iii) का भाषा भारतस्य राष्ट्रभाषा भवितुं शक्नोति?
- II. पूर्णवाक्येन उत्तरत- (केवलं प्रश्नद्वयम्) (2x2=4)
(i) दक्षिण-भारतीयमुख्यन्यायाधीशेन कुत्र किम् उक्तम्?
(ii) भारतस्य कृते गर्वस्य विषयः कः?
(iii) नासावैज्ञानिकैः कीदृशी स्वीकृतिः कृता वर्तते?
- III. अस्य अनुच्छेदस्य कृते उपयुक्तं शीर्षकं संस्कृतेन लिखत। (1x1=1)
- IV. निर्देशानुसारम् उत्तरत- (केवलं प्रश्नत्रयम्) (1x3=3)
(i) 'दुःखप्राप्तिः' इति पदस्य किं विलोमपदं गद्यांशे प्रयुक्तम्?
(क) सुखप्राप्तिः (ख) आनन्दप्राप्तिः (ग) सम्प्राप्तिः (घ) विषमप्राप्तिः
(ii) 'शेषम्' इति पदस्य पर्यायपदं गद्यांशे किम्?
(क) अपितु (ख) अमूल्यम् (ग) विशेषम् (घ) अवशिष्टम्
(iii) 'अनुभूयते' इति क्रियायाः कर्तृपदं गद्यांशे किम्?
(क) तीव्रगत्या (ख) जनैः (ग) जनैः (घ) देशैः
(iv) 'निर्देशकम्' इति पदस्य किं विशेष्यपदं गद्यांशे प्रयुक्तम्?
(क) दर्पणः (ख) उपहारः (ग) अवशिष्टम् (घ) साहित्यम्

'ख' खण्डः- रचनात्मक-कार्यम् - 15 अङ्काः

2. मित्रं प्रति लिखितं पत्रं मञ्जूषापदसहायतया पूरयित्वा उत्तरपुस्तिकायां पुनः लिखत-

(½×10=5)

डी.पी.एस. छात्रावासतः

तिथिः _____

प्रियमित्र!

(1) _____ नमो नमः

अत्र सर्वं कुशलम् अस्ति। मम (2) _____ सम्यक् चलति। गतसप्ताहे अस्माकं विद्यालये 'आर्ट-ऑफ-लिविंग' इत्यस्य कार्यक्रमशिविरम्

(3) _____ आसीत्। दिनत्रयं यावत् वयं (4) _____ कृतवन्तः। तस्मिन् तु मया (5) _____ अनुभूतः। तत्र तु योगस्य

अभ्यासः (6) _____ अभवत्। अस्माभिः सूर्यनमस्कारः, कृतः। मया तु इदानीं (7) _____ अनुभूयन्ते। मित्र! विश्वासं करोतु अस्मिन्

कार्यक्रमे (8) _____ कोऽपि मानवः आत्मिकरूपेण शान्तः तृप्तः स्वस्थः च (9) _____ शक्नोति। भवान् अपि इदं शिविरं करोतु। पितृभ्याम् (10) _____ निवेदयतु।

भवतः शुभचिन्तकः

शिवः

मञ्जूषापदानि- भवितुं, गत्वा, प्रसन्नताः, प्रणामाञ्जलिम्, सप्रेम, अध्ययनं, अत्यानन्दः, आयोजितम्, अपि, प्रसन्नताप्रदायिकार्यक्रमं

3. अधः प्रदत्तं चित्रं दृष्ट्वा मञ्जूषायां प्रदत्तशब्दानां सहायतया संस्कृतेन पञ्चवाक्यानि लिखत-

(1×5=5)



मञ्जूषापदानि-

वार्षिकक्रीडोत्सवः, मुख्यातिथिः, छात्राः, उत्पन्ति, सन्ति, प्रसन्नाः, पुरस्कारम्, वृक्षाः, क्रीडा, विद्यालयः, क्रीडन्ति, भवनम्, घटीयन्त्रम्, हरिताः, पुष्पाणि, अस्ति, ददाति, छात्रेभ्यः, कोलाहलः, छात्रसम्मर्दः, कार्यक्रमः, सुन्दरम्, खगाः आकाशे

अथवा

'विद्यालयम्' अधिकृत्य मञ्जूषापदसहायतया संस्कृतेन पञ्चवाक्यानि लिखत-

मञ्जूषापदानि-

छात्राः, क्रीडाक्षेत्रम्, भवनम्, वाटिका, पुष्पाणि, इतस्ततः, शिक्षकाः, पठन्ति, पाठयन्ति, भ्रमन्ति, क्रीडन्ति, पुस्तकालयः, पुस्तकानि, समाचारपत्रम्

4. अधोलिखितां कथां मञ्जूषायाः सहायतया पूरयित्वा पुनः लिखत-

(½x10=5)

देउलनामा एकः (i) _____ आसीत्। तत्र राजसिंहः नाम (ii) _____ निवसति स्म। एकदा (iii) _____ पत्नी आवश्यककार्येण स्वपुत्राभ्यां (iv) _____ पितुर्गृहं चलिता। मार्गे सा बुद्धिमती (v) _____ व्याघ्रम् अपश्यत्। सा व्याघ्रम् (vi) _____ दृष्ट्वा पुत्रौ (vii) _____ अमारयत् तथा अवदत् यत् जानामि युवां व्याघ्रं (viii) _____ इच्छथः परन्तु व्याघ्रः तु एकः एव। अतः एकमेव (ix) _____ मिलित्वा युवां खादतम्। महिलायाः एतद् वचनं (x) _____ व्याघ्रः भयात् पलायितः। अत एव कथ्यते- 'मतिरेव बलाद् गरीयसी' इति।

मञ्जूषापदानि-

श्रुत्वा, ग्रामः, तस्य, राजपुत्रः, सह, एकं, आगच्छन्तम्, चपेटया, खादितुम्, व्याघ्रम्

अथवा

रिक्तस्थानानि पूरयित्वा अधोलिखितं संवादं पुनः लिखत-

(1x5=5)

अनन्या - तव वस्त्राणि तु अतीव शोभन्ते।

शुभा - (i) _____।

अनन्या - तव पार्श्वे कति नूतन परिधानानि सन्ति?

शुभा - (ii) _____।

अनन्या - किं करिष्यसि एतैः परिधानैः?

शुभा - (iii) _____। तव समीपे कति परिधानानि सन्ति?

अनन्या - (iv) _____। अहं तैः सन्तुष्टा अस्मि।

शुभा - अनन्ये! पुस्तकैः किं करिष्यसि?

अनन्या - (v) _____।

मञ्जूषापदानि-

- * पुस्तकैः ज्ञानप्राप्तिः भवति।
- * एतानि वस्त्राणि मम जन्मदिवसे मम माता क्रीतवती।
- * मम समीपे तु पञ्चपरिधानानि एव सन्ति।
- * मे (मम) पार्श्वे बहूनि नूतनपरिधानानि सन्ति।
- * एतानिस्वगृहे अथवा मित्राणां गृहे शुभावसरेषु धारयिष्यामि।

5. अधोलिखितवाक्येषु रेखाङ्कितपदेषु सन्धिं सन्धिच्छेदं वा कुरुत - (केवलं प्रश्नचतुष्टयम्) (1x4=4)
- (i) यो+अन्यथा कुरुते मनः सः पापतरः।
(ii) सः परैः+न परिभूयते।
(iii) अदीयमानं निधन+एकनिष्ठं भवति।
(iv) क्रोधाद्भवति सम्मोहः।
(v) यदि कश्चित् गते पतेत्।
6. अधोलिखितवाक्येषु रेखाङ्कितपदानां समासं विग्रहं वा प्रदत्तविकल्पेभ्यः चित्वा लिखत- (केवलं प्रश्नचतुष्टयम्) (1x4=4)
- (i) विमूढधीः धर्मप्रदां वाचं त्यजति।
(क) अधर्मं प्रददाति इति (ख) धर्मस्य प्रददाति इति (ग) धर्मः प्रददाति इति (घ) धर्मं प्रददाति इति
- (ii) सम्मोहात् स्मृतिविभ्रमः जायते।
(क) स्मृतिं विभ्रमः (ख) स्मृत्यै विभ्रमः (ग) स्मृतेः विभ्रमः (घ) स्मृतिः विभ्रमा
- (iii) श्रीकृष्णः च अर्जुनः च अत्र आगच्छतः।
(क) श्रीकृष्णार्जुनौ (ख) श्रीकृष्णार्जुनौ (ग) श्रीकृष्णाअर्जुनौ (घ) श्रीकृष्णाअर्जुनौ
- (iv) हिमाद्रितुङ्गशृङ्गैः सुशोभिता सूर्योदयभूमिः इयम्।
(क) हिमाद्रिं तुङ्गशृङ्गैः (ख) हिमाद्रेः तुङ्गशृङ्गैः (ग) हिमाद्रये तुङ्गशृङ्गैः (घ) हिमाद्रौ तुङ्गशृङ्गैः
- (v) सर्वेषामपि महत्त्वं विद्यते यथासमयम्।
(क) समयम् अनतिक्रम्य (ख) समयेन अनतिक्रम्य (ग) समयः अतिक्रम्य (घ) समययथा
7. रेखाङ्कितपदानां प्रकृतिप्रत्ययौ संयोज्य विभज्य वा उचितम् उत्तरं विकल्पेभ्यः चित्वा लिखत- (केवलं प्रश्नचतुष्टयम्)(1x4=4)
- (i) विद्वांसः एव चक्षुष्मन्तः कथ्यन्ते।
(क) चक्षु+मतुप् (ख) चक्षश्+मतुप् (ग) चक्षुस्+मतुप् (घ) चक्षुः+मतुप्
- (ii) मधुरभाषिणी वाणी प्रियत्वं लभते।
(क) मधुरभाषा+ङीप् (ख) मधुर+भाषिणी (ग) मधुरभाषि+ङीप् (घ) मधुरभाषिन्+ङीप्
- (iii) रमणीय+टाप् सृष्टिं पश्य।
(क) रमणीया (ख) रमणीयाम् (ग) रमणीयायै (घ) रमणीयायाम्
- (iv) त्वं नैतिकं कार्यं कुरु।
(क) नीति+ठक् (ख) नैति+ठक् (ग) नेति+ठक् (घ) नैतिक+ठक्
- (v) प्रकृतेः सुन्दर+तल् पश्य।
(क) सुन्दरता (ख) सुन्दरतया (ग) सुन्दरताम् (घ) सुन्दरतायाः
8. उचितमञ्जूषापदैः वाच्यानुसारं रिक्तस्थानानि पूरयित्वा अधोलिखितं संवादं पुनः लिखत- (केवलं प्रश्नत्रयम्) (1x3=3)
- उमेशः - सुरेश! त्वं प्रातरेव किं स्मरसि?
सुरेश :- उमेश! मया तु श्लोकाः (i) _____ ।
उमेशः - त्वं कां भाषां जानासि?
सुरेश:- मया तु (ii) _____ एव ज्ञायते।
उमेश:- तव पिता किं कार्यं करोति?
सुरेशः - मे (iii) _____ अध्यापनं क्रियते।
उमेशः - परन्तु त्वं रात्रौ किं करोषि?
सुरेशः - रात्रौ तु मया (iv) _____ पठ्यते।

मञ्जूषापदानि-

गणितविषयः, स्मर्यन्ते, पित्रा, संस्कृतभाषा

9. कालबोधकशब्दैः अधोलिखित-दिनचर्यां पूरयत- (केवलं प्रश्नत्रयम्) (1x3=3)
- (i) सौम्या प्रातः ----- (4:30) वादने उत्तिष्ठति।
(ii) सा ----- (5:00) वादने स्नानं करोति।
(iii) सा ----- (5:45) वादने योगाभ्यासं करोति।
(iv) सा ----- (7:15) वादने विद्यालयं गच्छति।

10. मञ्जूषायां प्रदत्तैः उचितैः अव्ययैः अधोलिखितवाक्येषु रिक्तस्थानानि पूरयत- (केवलं प्रश्नचतुष्टयम्)

(1x4=4)

- (i) प्राणत्राणाय अश्वाः ----- अधावन् ।
(ii) अभ्यासेन वैराग्येण ----- मनः गृह्यते ।
(iii) यूयं सर्वे ----- मम प्रियाः ।
(iv) मम केकारवं श्रुत्वा कोकिलः----- लज्जते ।
(vi) जीवाः सर्वे ----- मोदन्ताम् ।

मञ्जूषापदानि- अत्र, अपि, इतस्ततः, च, एव

11. रेखाङ्कित-अशुद्धपदाय उचितपदं चित्वा वाक्यानि पुनः लिखत- (केवलं प्रश्नत्रयम्)

(1x3=3)

- (i) त्वं नर्तनात् अन्यत् किम् अपरं जानाति?
(क) जानसि (ख) जानासि (ग) जाने (घ) जानीसि
(ii) राजा वैद्यान् अहूय पृच्छ ।
(क) अपृच्छः (ख) अपृच्छत (ग) अपृच्छत् (घ) अपृच्छम्
(iii) ह्यः वर्षा भविष्यति ।
(क) भवति (ख) भवतु (ग) भवेत् (घ) अभवत्
(iv) मनाम् तु दुर्निग्रहं चलं वर्तते ।
(क) मनम् (ख) मन (ग) मनः (घ) मनस्

'घ' खण्डः - पठित-अवबोधनम्- 30 अङ्काः

12. अधोलिखितं गद्यांशं पठित्वा प्रदत्तप्रश्नान् उत्तरत-

कस्मिंश्चित् नगरे चन्द्रो नाम भूपतिः प्रतिवसति स्म । तस्य पुत्राः वानरक्रीडारताः वानरयूथं नित्यमेव विविधैः भोज्यपदार्थैः पुष्टिं नयन्ति स्म । तस्मिन् राजगृहे बालवाहनयोग्यं मेषयूथम् आसीत् । तेषां मेषाणां मध्ये एको मेषः जिह्वालोलुपतया अहर्निशं महानसं प्रविश्य यत् पश्यति तद् भक्षयति । ते च सूपकाराः यत्किञ्चित् काष्ठं मृगमयं भाजनं कास्यताम्रपात्रं वा पश्यन्ति तेन तम् आशु ताडयन्ति स्म ।

I. एकपदेन उत्तरत- (केवलं प्रश्नद्वयम्)

(½x2=1)

- (i) के मेषं ताडयन्ति स्म?
(ii) जिह्वालोलुपः कः आसीत्?
(iii) मेषयूथं कीदृशम् आसीत्?

II. पूर्णवाक्येन उत्तरत- (केवलं प्रश्नद्वयम्)

(1x2=2)

- (i) कस्मिंश्चित् नगरे कः वसति स्म?
(ii) मेषः किं करोति?
(iii) सूपकाराः कथं ताडयन्ति स्म?

III. निर्देशानुसारम् उत्तरत - (केवलं प्रश्नद्वयम्)

(1x2=2)

- (i) 'नयन्ति स्म' इति क्रियायाः कर्तृपदं गद्यांशे किम्?
(ii) 'तस्मिन्' इति पदस्य विशेष्यपदं गद्यांशे किम्?
(iii) 'पात्रम्' इति पदस्य किं पर्यायपदं गद्यांशे प्रयुक्तम्?

13. अधोलिखितं पद्यांशं पठित्वा प्रदत्तप्रश्नान् उत्तरत-

तस्मात्त्वमिन्द्रियाण्यादौ नियम्य भरतर्षभ ।
पाप्मानं प्रजहि ह्येनं ज्ञानविज्ञाननाशनम् ॥
असंशयं महाबाहो मनो दुर्निग्रहं चलम् ।
अभ्यासेन तु कौन्तेय वैराग्येण च गृह्यते ॥

I. एकपदेन उत्तरत- (केवलं प्रश्नद्वयम्)

(½x2=1)

- (i) अर्जुनः केषां नियमनं कुर्यात्?
(ii) अर्जुनः कदा नियमनं कुर्यात्?
(iii) अर्जुनः कम् नाशयतु?

II. पूर्णवाक्येन उत्तरत- (केवलं प्रश्नद्वयम्)

(1x2=2)

- (i) कामः कीदृशः वर्तते?
(ii) मनः कीदृशं वर्तते?
(iii) मनः कथं वशीक्रियते?

III. निर्देशानुसारम् उत्तरत - (केवलं प्रश्नद्वयम्)

(1x2=2)

- (i) 'पाप्मानं प्रजहि ह्येनं ज्ञानविज्ञाननाशनम्' अत्र क्रियापदं किम्?
(ii) 'प्राक्' इति पदस्य किं पर्यायपदं श्लोके प्रयुक्तम्?
(iii) 'चलम्' इति पदस्य विशेष्यपदं श्लोकात् चित्वा लिखत ।

14. अधोलिखितं नाट्यांशं पठित्वा प्रदत्तप्रश्नान् उत्तरत-

रविः - मान्यवर! अस्य प्रदेशस्य प्रमुखाः उत्सवाः के?
पर्यटनाधिकारी - साधु पृष्टम्। अत्र अनेके प्रमुखोत्सवाः। 'वाडचो' जनजातीनां प्रमुखं पर्व 'ओरिया' इति अस्ति। एतत् तु फरवरी इति मासे मान्यते। अस्मिन् अवसरे कृषिभूमिपूजनं सेतुनिर्माणं च सामाजिकं कार्यं क्रियते। 'मोपीन' इति अपि कृषिपर्व अस्ति। देवानामपि देवः 'मोपीन' इति कथ्यते। 'होली' सट्टशम् एव पर्व इदम्।

- I. एकपदेन उत्तरत- (केवलं प्रश्नद्वयम्) (½x2=1)
(i) कः प्रश्नं करोति?
(ii) कुत्र अनेके प्रमुखोत्सवाः?
(iii) किम् पर्व 'होली' सट्टशम्?
- II. पूर्णवाक्येन उत्तरत- (केवलं प्रश्नद्वयम्) (1x2=2)
(i) 'ओरिया' इति पर्वणि किं भवति?
(ii) 'मोपीन' इति कीदृशं पर्वं वर्तते?
(iii) ओरिया केषां पर्वं वर्तते?
- III. निर्देशानुसारम् उत्तरत - (केवलं प्रश्नद्वयम्) (1x2=2)
(i) 'अनेके प्रमुखोत्सवाः' अत्र विशेष्यपदं किम्?
(ii) 'अनुचितम्' इति पदस्य किं पर्यायपदम् अनुच्छेदे आगतम्?
(iii) 'चन्द्रमाः' इति पदस्य किं विलोमपदम् अनुच्छेदे प्रयुक्तम्?

15. रेखाङ्कितपदानि आधृत्य प्रश्ननिर्माणं कुरुत- (केवलं पञ्चप्रश्नाः) (1x5=5)

- (i) राजा शक्राय चक्षुः समर्पितवान्।
(ii) मम पिच्छानाम् अपूर्वं सौन्दर्यम्।
(iii) भवान् द्रौणेः चपलां प्रकृतिं न जानाति।
(iv) सर्वा पृथ्वी दग्धा स्यात्।
(v) मनः अभ्यासेन गृह्यते।
(vi) परशुरामकुण्डं लोहितनद्याः किञ्चित् दूरम् अस्ति।

16. मञ्जूषातः समुचितपदानि चित्वा अधोलिखितश्लोकस्य अन्वयं पूरयित्वा पुनः लिखत- (½x4=2)

असंशयं महाबाहो! मनो दुर्निग्रहं चलम्।
अभ्यासेन तु कौन्तेय! वैराग्येण च गृह्यते॥

अन्वयः - महाबाहो! (i) _____ मनः दुर्निग्रहं (ii) _____ (परन्तु) (हे) कौन्तेय! (एतत्) तु (iii) _____ वैराग्येण च (iv) _____।

मञ्जूषापदानि- गृह्यते , असंशयम् , चलम् , अभ्यासेन

अथवा

● मञ्जूषायाः साहाय्येन श्लोकस्य भावार्थं रिक्तस्थानानि पूरयित्वा पुनः लिखत- (½x4=2)

आयुषः क्षण एकोऽपि न लभ्यः स्वर्णकोटिकैः।
स चेन्निरर्थकं नीतः का नु हानिस्ततोधिका॥

भावार्थः : अस्य भावोऽयं वर्तते यत् (i) _____ एकः अपि (ii) _____ क्षणः स्वर्णकोटिकैरपि लब्धुं न शक्यते। यदि असौ क्षणः (iii) _____ नीयते तर्हि तस्मात् अधिका (iv) _____ का भविष्यति।

मञ्जूषापदानि- हानिः , अतीतः , आयुषः , निरर्थकं

17. अधोलिखितवाक्येषु रेखाङ्कितपदानां प्रसङ्गानुकूलम् उचितार्थं चित्वा लिखत- (केवलं प्रश्नचतुष्टयम्) (1x4=4)

- (i) पादं शिष्यः स्वमेधया। (क) स्वमसयेन (ख) स्वगत्या (ग) स्वबुद्ध्या (घ) स्वशिक्षया
(ii) अमात्याः विषण्णाः भूत्वा अवदन्। (क) माननीयाः (ख) मन्त्रिणः (ग) कर्मचारिणः (घ) सेवकाः
(iii) ऊह-अपोहार्थविज्ञानम्। (क) कुतर्कः (ख) विपक्षे तर्कः (ग) शङ्कानिवारणम् (घ) अनर्थः
(iv) अलम् अतिविकल्पनेन। (क) परस्परम् (ख) आत्मश्लाघया (ग) अस्थिरबुद्ध्या (घ) भाषणेन
(v) तस्याहं निग्रहं मन्ये वायोरिव सुदुष्करम्। (क) वशीकरणम् (ख) न्यासः (ग) प्रसन्नः (घ) अप्रसन्नः

18. अधोलिखितकथायां रिक्तस्थानानि पूरयित्वा कथां पुनः लिखत- (½x8=4)

भगवान् बोधिसत्त्वः (i) _____ दानशालासु विचरन् आसीत्। सः बहुधनलाभेन (ii) _____ याचकानां विरलसङ्ख्यां विलोक्य (iii) _____ मम (iv) _____ धनलाभमात्रेण सन्तुष्टाः भवन्ति। नूनं ते दानवीराः (v) _____ यान् याचकाः शरीरस्य (vi) _____ अपि याचन्ते। एवं राज्ञः स्वेषु गात्रेष्वपि (vii) _____ विज्ञाय सकलं (viii) _____ व्याकुलं सञ्जातम्। राज्ञि एवं विचारयति सति तस्य दानशीलतां परीक्षितुं शक्रः नेत्रहीनयाचकरूपेण तत्पुरतः आगच्छत्।

मञ्जूषापदानि- सन्तुष्टानां, निरासक्तिं, कदाचित्, अर्थिनः, अचिन्तयत्, सौभाग्यशालिनः, ब्रह्माण्डं, अङ्गानि



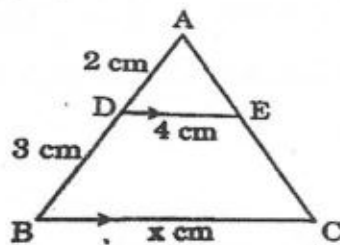
General Instructions :

- (i) This Question Paper has 5 sections A, B, C, D and E.
- (ii) Section A has 20 MCQs carrying 01 mark each.
- (iii) Section B has 5 questions carrying 02 marks each.
- (iv) Section C has 6 questions carrying 03 marks each.
- (v) Section D has 4 questions carrying 05 marks each.
- (vi) Section E has 3 Case Based Integrated units of assessment (04 marks each) with sub-parts of the values of 1, 1 and 2 marks each respectively.
- (vii) All questions are compulsory. However, an internal choice in 2 questions of 5 marks, 2 questions of 3 marks and 2 questions of 2 marks has been provided. An internal choice has been provided in the 2 marks questions of Section E.
- (viii) Draw neat figures wherever required. Take $\pi = \frac{22}{7}$ wherever required if not stated.

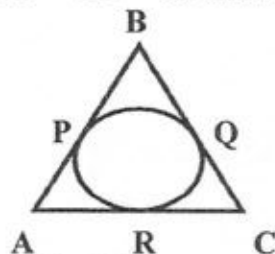
Section – A

(This section consists of 20 questions of 1 mark each)

01. If $p^2 = \frac{32}{50}$, then p is a/an
 (a) whole number (b) integer (c) rational number (d) irrational number
02. The number of quadratic polynomials having zeros -5 and -3 is/are:
 (a) 1 (b) 2 (c) 3 (d) more than 3
03. For which of the following values of m and n do the given pair of equations have infinitely many solutions?
 $mx + 4y - 6 = 0$
 $ny - 12x + 12 = 0$
 (a) $m = -1, n = 2$ (b) $m = -1, n = 3$ (c) $m = 6, n = -8$ (d) $m = 6, n = -2$
04. The fourth term from the end of the A.P. $-11, -8, -5, \dots, 49$ is
 (a) 37 (b) 40 (c) 43 (d) 58
05. The end points of the diameter of a circle are $(2, 4)$ and $(-3, -1)$. The radius of the circle is :
 (a) $\frac{5\sqrt{2}}{2}$ units (b) $5\sqrt{2}$ units (c) $3\sqrt{2}$ units (d) $\pm \frac{5\sqrt{2}}{2}$ units
06. In the given figure, $DE \parallel BC$. The value of x is :

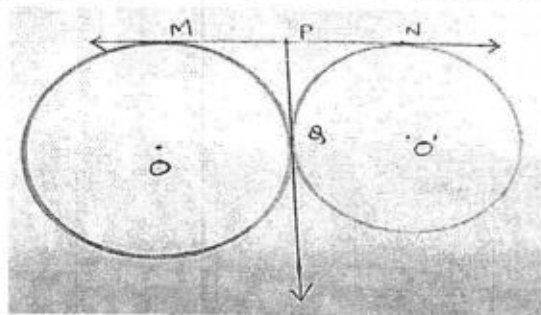


- (a) 6 cm (b) 10 cm (c) 12.5 cm (d) 8 cm
07. Two A.P.'s have same common difference. If the difference between their 100th terms is 100, then what is the difference between their 1000th terms?
 (a) 0 (b) 50 (c) 100 (d) 1000
08. The distance of the point $(-1, 7)$ from x -axis is :
 (a) -1 (b) 6 (c) $\sqrt{50}$ (d) 7
09. In the given figure, $AB = BC = 10$ cm. If $AC = 7$ cm, then length of BP is :



- (a) 3.5 cm (b) 6.5 cm (c) 5 cm (d) 7 cm
10. A pole 6m high casts a shadow $2\sqrt{3}$ m long on the ground, then the sun's angle of elevation is :
 (a) 90° (b) 30° (c) 45° (d) 60°
11. If $\sin A = \frac{1}{2}$, then the value of $\cot A$ is :
 (a) $\sqrt{3}$ (b) $\frac{1}{\sqrt{3}}$ (c) $\frac{\sqrt{3}}{2}$ (d) 1

12. In the given figure, $PQ = 3 \text{ cm}$, then the length of MN is :



- (a) 3 cm (b) 4.5 cm (c) 6 cm (d) 5 cm
13. In a rectangle, the angle between a diagonal and a side is 30° and the length of the diagonal is 8 cm. The area of the rectangle is :
 (a) 16 cm^2 (b) $\frac{16}{\sqrt{3}} \text{ cm}^2$ (c) $16\sqrt{3} \text{ cm}^2$ (d) $8\sqrt{3} \text{ cm}^2$
14. If the perimeter of a semicircular protractor is 36 cm then its diameter is :
 (a) 14 cm (b) 16 cm (c) 18 cm (d) 12 cm
15. Two coins are tossed together. The probability of getting at least one tail is:
 (a) $\frac{1}{4}$ (b) $\frac{1}{2}$ (c) $\frac{3}{4}$ (d) 1
16. The area of a circle that can be inscribed in a square of side 6 cm is :
 (a) $36\pi \text{ cm}^2$ (b) $18\pi \text{ cm}^2$ (c) $12\pi \text{ cm}^2$ (d) $9\pi \text{ cm}^2$
17. From the letters of the word 'MATHEMATICS', the probability of selecting a vowel is :
 (a) $\frac{8}{11}$ (b) $\frac{7}{11}$ (c) $\frac{3}{11}$ (d) $\frac{4}{11}$
18. The empirical relation between mode, median and mean of a distribution is :
 (a) $\text{Mode} = 3 \text{ Median} - 2 \text{ Mean}$ (b) $\text{Mode} = 2 \text{ Mean} - 3 \text{ Median}$
 (c) $\text{Mode} = 2 \text{ Median} - 3 \text{ Mean}$ (d) $\text{Mode} = 2 \text{ Median} - \text{Mean}$

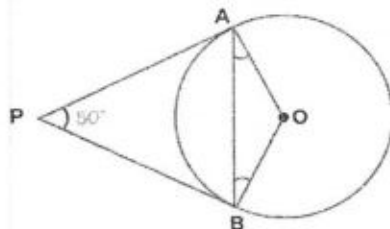
DIRECTION : In question number 19 and 20, a statement of Assertion (A) is followed by a statement of Reason (R). Choose the correct option :

- (a) Both Assertion (A) and Reason (R) are true and Reason (R) is the correct explanation of Assertion (A).
 (b) Both Assertion (A) and Reason (R) are true and Reason (R) is not the correct explanation of Assertion (A).
 (c) Assertion (A) is true but Reason (R) is false.
 (d) Assertion (A) is false but Reason (R) is true.
19. **Assertion (A) :** 12th term of the A.P. 30, 27, 24, ... is the first negative term of the A.P.
Reason (R) : Sum of first n terms of an A.P. $a, a + d, a + 2d, \dots$ is $S_n = \frac{n}{2} [2a + (n - 1)d]$
20. **Assertion (A) :** The radii of two cones are in the ratio 2 : 3 and their volumes are in the ratio 1 : 3. Then the ratio of their heights is 3 : 2.
Reason (R) : Volume of cone is $\frac{1}{3}\pi r^2 h$.

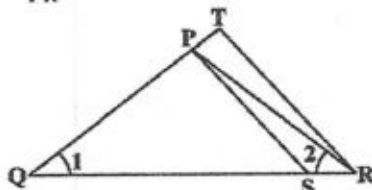
Section - B

This section consists of 5 questions of 2 marks each.

21. Two numbers are in the ratio 2 : 3 and their L.C.M. is 180. What is the H.C.F. of the two numbers?
22. In the given figure if PA and PB are tangents to the circle with centre O such that $\angle APB = 50^\circ$, then find the measure of $\angle OAB$.



23. In the given figure, $\frac{QR}{QS} = \frac{QT}{PR}$ and $\angle 1 = \angle 2$. Show that $\Delta PQS \sim \Delta TQR$.



24. Evaluate : $\cos^2 30^\circ + \sin^2 45^\circ - \frac{1}{3} \tan^2 60^\circ + \cos 90^\circ$.

OR

If $\tan \theta = \frac{a}{b}$, find $\frac{a \sin \theta - b \cos \theta}{a \sin \theta + b \cos \theta}$

25. Find the area of a quadrant of a circle whose circumference is 44 cm.

OR

If 3 cows are tied each with a rope of length 14 cm at three corners of a grass field of triangular shape, find the area of region in which the cows can graze. (Use $\pi = \frac{22}{7}$).

Section - C

This section consists of 6 questions of 3 marks each.

26. Prove that $2 + \sqrt{3}$ is an irrational number.
27. If α, β are the zeros of a quadratic polynomial $5x^2 + 5x + 1$, find the value of
 (i) $\alpha^2 + \beta^2$ (ii) $\alpha^{-1} + \beta^{-1}$
28. The sum of a two digit number and number obtained by reversing the digits is 66. If the digits of the number differ by 2, find the number/numbers.

OR

Solve : $152x - 378y = -74$
 $-378x + 152y = -604$

29. Prove that the parallelogram circumscribing a circle is a rhombus.

OR

Prove that the opposite sides of a quadrilateral circumscribing a circle subtend supplementary angles at the centre.

30. Prove that $\sqrt{\frac{\sec\theta - 1}{\sec\theta + 1}} + \sqrt{\frac{\sec\theta + 1}{\sec\theta - 1}} = 2 \operatorname{cosec} \theta$

31. Given below is the frequency distribution of the heights of players in a school :

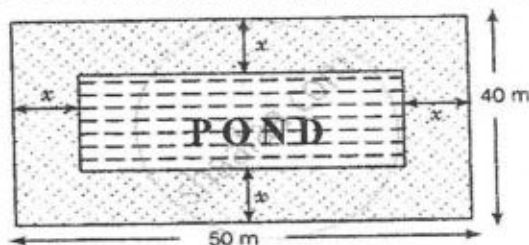
Height (in cm)	160-162	163-165	166-168	169-171	172-174
Number of Students	15	118	142	127	18

Find the modal height and interpret it.

Section - D

This section consists of 4 questions of 5 marks each.

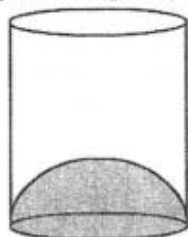
32. State and prove the Basic Proportionality theorem.
33. In a rectangular park of dimensions $50\text{ m} \times 40\text{ m}$, a rectangular pond is constructed so that the area of grass strip of uniform width surrounding the pond would be 1184 m^2 . Find the length and breadth of the pond.



OR

The sum of the reciprocals of Rehman's age (in years) 3 years ago and 5 years from now is $\frac{1}{3}$. Find his present age.

34. A juice seller was serving his customers using glasses as shown in figure. The inner diameter of the cylinder is 5 cm but the bottom of the glass had a hemispherical raised portion. If the height of the glass is 10 cm, find the actual capacity and apparent capacity of the glass.



OR

From a solid right circular cylinder with base radius 3 cm and height 12 cm, a right circular cone of same base radius and height equal to one third the height of cylinder is removed. Find the total surface area of the remaining solid. [Use $\pi = 3.14$].

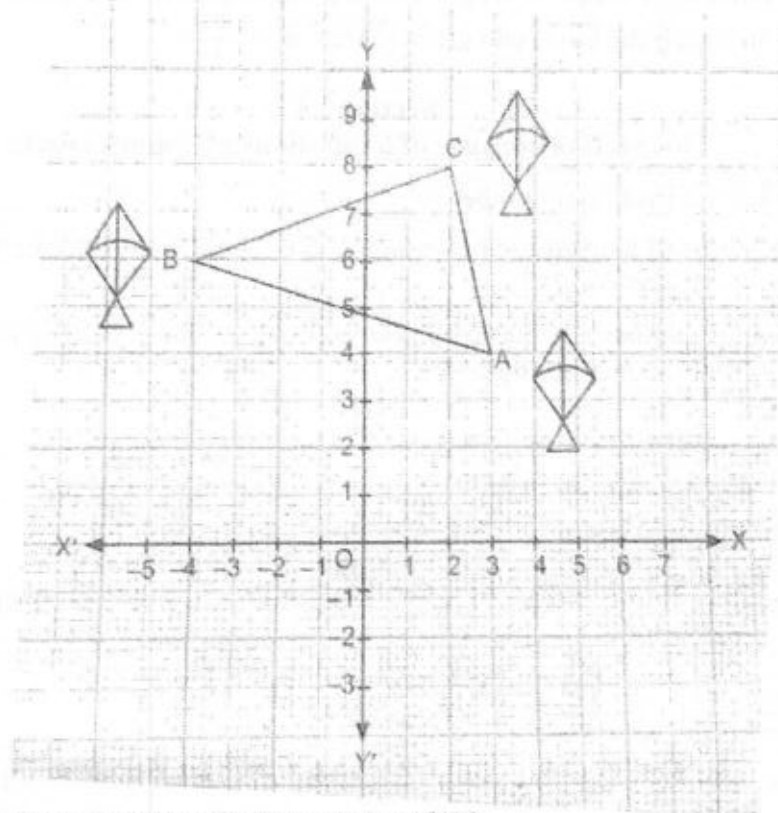
35. The median of the following data is 28.5. Find the values of x and y .

C.I.	0-10	10-20	20-30	30-40	40-50	50-60	Total
Frequency	5	x	20	15	y	5	60

Section – E

This section consists of 3 Case Study questions of 4 marks each.

36. A boy standing at O, observed three kites at points A, B and C. Based on this answer the following:

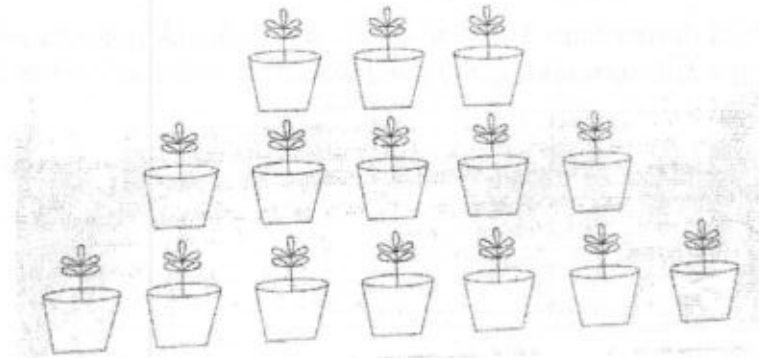


- (i) What is the distance between the kites at A and B?
- (ii) What is the ratio in which $y - axis$ divides the line segment AB?
- (iii) What are the coordinates of point on the $y - axis$ equidistant from B and C?

OR

What is the length of median of triangle through B?

37. Reema being a plant lover decides to open a nursery and she bought few plants with pots. She wants to place pots in such a way that the number of pots in first row is 3, in second row is 5 and in third row is 7 and so on...



Based on the above answer the following:

- (i) How many pots are there in 15th row?
- (ii) If there are total 120 pots, how many rows are there?
- (iii) If there are 21 rows, how many pots will be there in middle row?

OR

If she increases two pots in each row, how many plants will be there in 10 rows?

38. A jet fighter plane is flying in the sky at a certain height such that the angle of elevation of the plane from a point on the ground is 60° . After 15 seconds the jet fighter plane reaches a point such that the angle of elevation of the plane from the same point on the ground becomes 30° . Assume that the plane is flying at a constant height above the ground.

Based on the above information, answer the following questions :

- (i) Draw a well labelled figure for the above. (01)
- (ii) If the jet is flying at the speed of 360 km/h then find the distance covered by the plane from initial point to the final point in 15 seconds. (01)
- (iii) If the jet is flying at a speed of 360 km/h then find the constant height at which it is flying. (02)

OR

If the jet is flying at the speed of 720 km/h then find the constant height at which it is flying.

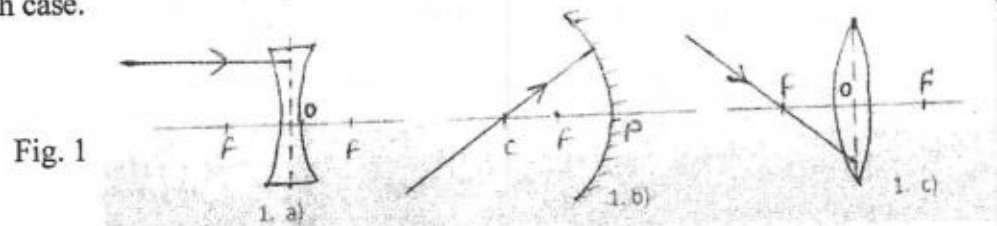


General instruction:

- (i) This question paper consists of 39 questions in 3 sections.
- (ii) All questions are compulsory. However, an internal choice is provided in some questions. A student is expected to attempt only one of these questions.
- (iii) 20 objective type questions carrying 1 mark each. Students have to write both correct option and answer.
- (iv) 6 Very Short questions carrying 02 marks each. Answers to these questions should be in the range of 30 to 50 words.
- (v) 7 Short Answer type questions carrying 03 marks each. Answers to these questions should be in the range of 50 to 80 words.
- (vi) 3 Long Answer type questions carrying 05 marks each. Answer to these questions should be in the range of 80 to 120 words.
- (vii) 3 source-based/case-based units of assessment of 04 marks each with sub-parts.
- (viii) For assertion and reasoning questions options are
 - (a) Assertion and Reason both are true, and Reason is the correct explanation of Assertion.
 - (b) Assertion and Reason both are true, but Reason is not the correct explanation of Assertion.
 - (c) Assertion is true but Reason is false.
 - (d) Assertion is false but Reason is true.

SECTION A (PHYSICS : 25 MARKS)

- Q.1 When a 4V battery is connected across an unknown resistor there is a current of 100mA in the circuit. The value of the resistance of the resistor is –
(a) 4 Ω (b) 40 Ω (c) 400 Ω (d) 25 Ω (1)
- Q.2 When a straight conductor is carrying current:
(a) There are circular magnetic field lines around it at each point of conductor.
(b) There are magnetic field lines parallel to the conductor.
(c) There are no magnetic field lines.
(d) None of the above. (1)
- Q.3 **Assertion :** Usually alloys are preferred over pure metals for making heating element .
Reason : Alloys get oxidised easily at higher temperature but pure metals do not. (1)
- Q.4 (a) What do you mean by (i) atmospheric refraction. (ii) scattering of light. (2)
(b) Why is the colour of sky blue during the day? Explain.
- Q.5 Draw the pattern of magnetic field due to a current carrying solenoid. What does the magnetic field pattern inside the solenoid indicate? (2)
- Q.6 (i) Write all the sign conventions applicable for spherical lenses.
(ii) Redraw the following diagrams (Fig.1) to complete the process of reflection or refraction, as per the rule, for given ray in each case. (3)



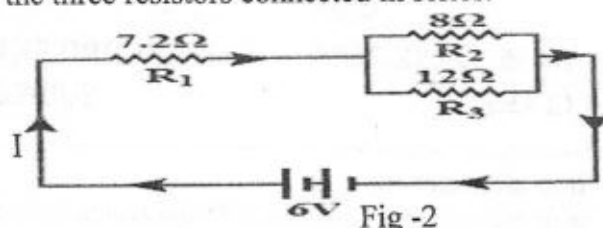
- Q.7 (a) When do we consider a person to be (i) myopic and (ii) hypermetropic ?
(b) Write two causes of hypermetropia.
(c) Draw ray diagram to show, how is hypermetropia corrected. (3)
- Q.8 State (i) Maxwell's Right Hand Thumb Rule for magnetic field around a straight conductor carrying current.
(ii) Fleming's Left hand rule for force on a conductor carrying current, placed in a magnetic field.
(iii) Function of Earth wire in a domestic circuit. (3)
- Q.9 **Read the given passage and answer the questions based on passage and related studied concept.**
The ability of a medium to refract light is expressed in terms of its optical density .It is not same as mass density. On comparing two media, the one with the large refractive index is optically denser medium and the other with the lower refractive index is optically rarer. Also the speed of light through a given medium is inversely proportional to its optically density.
(i) out of kerosene and water in which medium will the speed of light be greater? (1)
(ii) Refractive indices of glass, water and diamond are 1.5, 1.33 and 2.42 respectively. If the angle of incident is same in each medium then write the increasing order of the **angle of refraction** in these media. (1)
(iii) The absolute refractive indices of glass and water are $\frac{3}{2}$ and $\frac{4}{3}$ respectively. If the speed of light in glass is 2×10^8 m/s ,calculate the speed of light in (a) vacuum (b) water. (2)

OR

- (iii) If speed of light in benzene and ruby are 2.00×10^8 m/s and 1.75×10^8 m/s respectively. Find refractive index of a) Ruby with respect to Benzene & b) Benzene with respect to Ruby.

- Q.10 (a) Derive an expression for equivalent resistance of the three resistors connected in series.
 (b) Study the circuit diagram Fig- 2,

Given $R_1 = 7.2 \Omega$, $R_2 = 8 \Omega$ and $R_3 = 12 \Omega$
 find the value of
 (i) Equivalent resistance
 (ii) Circuit current I.
 (iii) potential difference across resistance R_2 .



(5)

SECTION B (CHEMISTRY: 25 MARKS)

- Q.11 Identify the basic salt from the following salts :
 (a) Na_2CO_3 (b) NH_4Cl (c) NaNO_3 (d) KCl (1)
- Q.12 The salt used to remove permanent hardness of water is –
 (a) NaHCO_3 (b) NaCl (c) $\text{Na}_2\text{CO}_3 \cdot 10\text{H}_2\text{O}$ (d) $\text{CaSO}_4 \cdot \frac{1}{2}\text{H}_2\text{O}$ (1)
- Q.13 Which one of the following properties is not generally exhibited by ionic compounds?
 (a) Solubility in water (b) High melting and boiling point
 (c) Electrical conductivity in solid state (d) Electrical conductivity in molten state (1)
- Q.14 Bronze is an alloy of
 (a) Copper and zinc (b) Aluminium and tin (c) Copper, tin and zinc (d) Copper and tin (1)
- Q.15 Which of the following is not observed in a homologous series?
 (a) Same functional group. (b) Difference of $-\text{CH}_2$ and 14 u of molecular mass.
 (c) Change in chemical properties (d) Gradation in physical properties (1)
- Q.16 A part of homologous series is shown below :
 C_3H_4 , C_4H_6 , C_5H_8
 Which of the following is a part of the series shown above ?
 (a) C_2H_2 (b) C_2H_4 (c) C_8H_6 (d) C_6H_{12} (1)
- Q.17 Common salt is not a raw material for
 (a) Bleaching powder (b) Plaster of Paris (c) Baking soda (d) Caustic soda (1)
- Q.18 **Assertion (A)** : Reaction of quicklime with water is an exothermic reaction.
Reason (R) : Quicklime reacts vigorously with water releasing a large amount of heat. (1)
- Q.19 (a) Identify the reducing agent and the substance reduced in the following reaction –
 $\text{Fe}_2\text{O}_3 + 2\text{Al} \rightarrow 2\text{Fe} + \text{Al}_2\text{O}_3$ (2)
 (b) Name the gases evolved at anode and cathode during electrolysis of water. (3)
- Q.20 (a) Give an example of precipitation reaction [balanced chemical equation].
 (b) Balance the following chemical equations :
 (i) $\text{H}_2\text{S} + \text{O}_2 \rightarrow \text{H}_2\text{O} + \text{SO}_2$ (ii) $\text{K} + \text{H}_2\text{O} \rightarrow \text{KOH} + \text{H}_2$
- Q.21 (a) You have two solutions A and B. The pH of solution A is 5 and pH of solution B is 9.
 (i) Which solution has more H^+ ion concentration
 (ii) Which solution is acidic and which is basic.
 (b) The industrial process used for the manufacture of caustic soda involves electrolysis of an aqueous solution of compound X. In this process, two gases Y and Z are liberated. Y is liberated at cathode. Z which is liberated at anode, on treatment with dry slaked lime form a compound B. Name X, Y, Z and B. (3)

OR

- Q.21 (a) Plaster of Paris should be stored in moisture proof containers. Explain Why?
 (b) What is a neutralisation reaction? Give two examples [balanced chemical equation].
- Q.22 Write the chemical equation for the following :
 (a) Combustion of methane. (b) Oxidation of ethanol. (c) Hydrogenation of ethene.
 (d) Saponification reaction. (e) Esterification (5)

OR

- Q.22 (a) Draw two structural isomers of butane.
 (b) Draw the structures of propanol and propanone.
 (c) Name the second homologue of (i) alcohols (ii) Aldehydes.
 (d) Write the IUPAC name of the following :
 (i) $\text{CH}_3 - \text{CH}_2 - \text{CH} = \text{CH}_2$ (ii) $\text{CH}_2 - \text{CH}_2 - \underset{\text{O}}{\parallel}{\text{C}} - \text{CH}_3$

(e) Show the covalent bond formation in nitrogen molecule.

Q.23 **Reads the given passage and answer the questions given below :**

On the basis of reactivity metals are grouped into three categories :

- (i) metals of low reactivity. (ii) metals of medium reactivity (iii) metals of high reactivity.

Therefore, metals are extracted in pure form from their ores on the basis of their chemical properties. Metals of high reactivity are extracted from their ores by electrolysis of the molten ore. Metals of low reactivity are extracted from their sulphide ores, which are converted into their oxides. The oxides of these metals are reduced to metals by simple heating. Metals of medium reactivity are extracted by calcination and roasting and followed by reduction and purification.

- (a) Name the process of reduction used for a metal of high reactivity. (1)
 (b) Why sulphide ores are converted into oxides ores during extraction process? (1)

(c) Describe briefly the method to obtain mercury from cinnabar. Write the chemical equation for the reactions involved in the process. (2)

OR

(c) Differentiate between roasting and calcination. (two points)

SECTION C (BIOLOGY : 30 MARKS)

Q.24 In a food chain, the snake predated a rabbit which fed on fresh green bushes. What percentage amount of the energy accumulated by rabbit, would be acquired by snakes? (1)

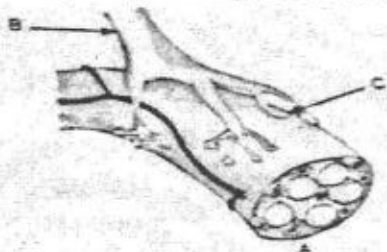
- (a) 90% (b) 10% (c) 50% (d) 25%

Q.25 Study the given food chain in a grassland and select the correct option. (1)



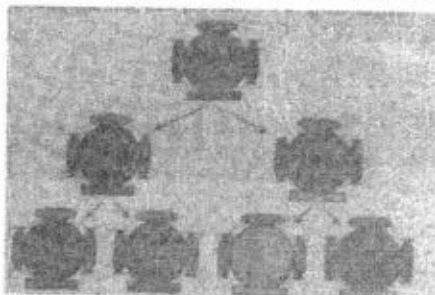
- (a) Grasshopper gets energy from frog (b) Grasshopper gets energy from the sun.
 (c) All the organisms except grass get energy from the sun. (d) Grass gets energy from the sun.

Q.26 Identify the given figure A and the parts labelled as B and C. (1)



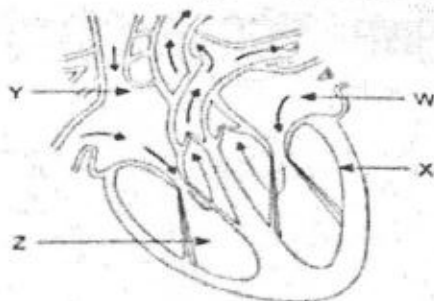
- (a) A-Neuron, B-Axon, C-Neuromuscular junction
 (b) A-Neuromuscular junction, B- Axon. C-Nerve ending
 (c) A-Muscle fibre, B-Axon, C - Dendrite
 (d) A-Neuromuscular junction, B-Axon, C-Dendrite

Q.27 Which of the following statement does not relate to the given diagram? (1)



- (a) Inheritance from the previous generation provides a basic body design.
 (b) Inheritance from the previous generation provides subtle changes in the next gene
 (c) Due to sexual reproduction, subtle changes are passed on to the next generation.
 (d) Minor differences are observed between the generations due to small inaccuracies in DNA copying.

Q.28 Which chamber is the first to receive oxygenated blood from the lungs in the figure given below. (1)



(a) W (b) X (c) Y (d) Z
 Q.29. The genotype of violet flowered plant is (WW) and that of white flowered plant is (ww). Hybrid of a cross between these two were self pollinated and obtained F₂ progeny, What will be the ratio of WW, Ww, ww plants in this progeny? (1)

(a)	WW : Ww : ww 1 : 1 : 2	(b)	WW : Ww : ww 1 : 2 : 2
(c)	WW : Ww : ww 1 : 2 : 1	(d)	WW : Ww : ww 2 : 1 : 1

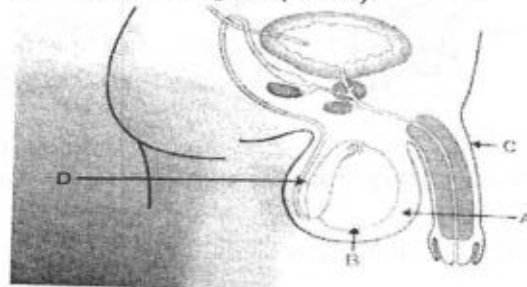
Q.30 The image of regeneration in planaria is given below: Select the correct statements (1)



- (i) Planaria reproduces sexually
 (ii) Planaria reproduces asexually
 (iii) Planaria is a unicellular organism
 (iv) Planaria is a multicellular organism

- (a) (ii) only (b) (iv) only (c) (i) and (iii) (d) (ii) and (iv)

- Q.31 **Assertion (A)** : One enzyme can work for all substances and break down all these substances. (1)
Reason (R) : Specific enzymes are needed for breakdown of specific substances
- Q.32 **Assertion (A)** : In fishes, there is a mixing of oxygenated and deoxygenated blood (1)
Reason (R) : Fishes have double circulation.
- Q.33 Name the hormones secreted by the following endocrine glands and specify one function of each. (2)
 (a) Thyroid (b) Pituitary
- Q.34 How do variations arise in organisms? Give two reasons. (2)
- Q.35 Identify the parts from the given figure (A - D). (2)



The part /organ

- (a) Where testis are located? (b) Release hormone testosterone
 (c) Ejaculatory organ (d) A long tube carrying sperm, connects with seminal vesicle.

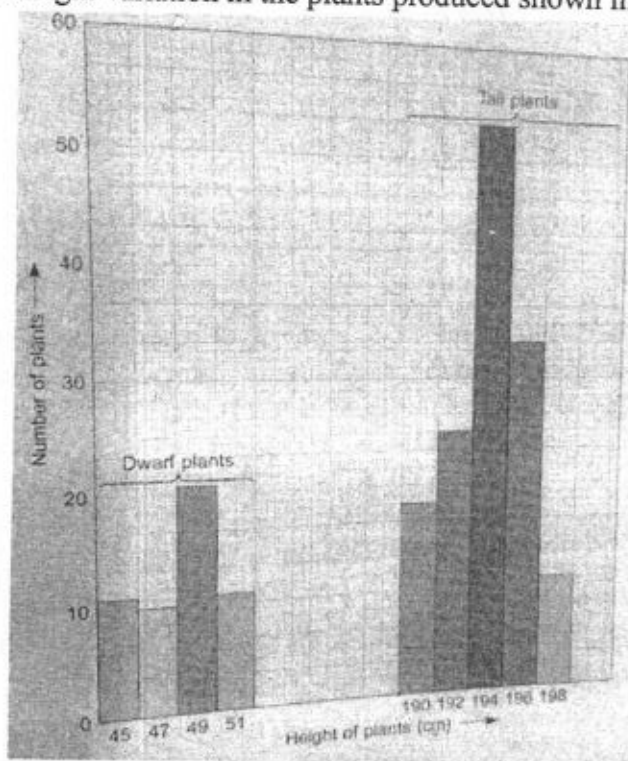
OR

Name the two types of germ-cells present in human beings. How do they structurally differ from each other? Give two differences?

- Q.36 (a) Write one function of each of the following components of the transport system in human beings (3)
 (i) Blood vessels (ii) Heart
 (b) What is transpiration?
 (c) Explain any two significance of transpiration in plants.
- Q.37 Differentiate between biodegradable and non-biodegradable substances with the help of one example each. List two changes in habit that people must adopt to dispose non-biodegradable waste for saving the environment. (3)
- Q.38 (a) "The sex of a child is determined by what is inherited from the father and not the mother." Justify. (5)
 (b) How did Mendel explain that it is possible that "a trait is inherited but not expressed in an organism"?(5)

OR

- (a) Why did Mendel choose garden pea for his experiments? Write two reasons.
 (b) List two contrasting visible characters of garden pea Mendel used for his experiment.
 (c) Explain in brief how Mendel interpreted his results to show that the traits may be dominant or recessive.
- Q.39 In garden pea plant, height of stem is controlled by a pair of alleles. Only one of the parental traits appeared in the F₁ generation and other traits remain hidden. The flowers of a tall plant (195 cm) were self-pollinated, the height variation in the plants produced shown in the chart below:



- (a) What is gene? (1)
 (b) Mention one difference between inherited traits and acquired traits. (1)
 (c) Do offspring and their parents have same trait? (2)

OR

Why are asexually reproducing organisms capable of showing hereditary features more?



General Instructions :

1. Attempt all questions.
2. Answer 1 mark questions as directions given.
3. Very short Answer Type Questions carry 2 marks each. Answer to each questions should not exceed 40 words.
4. Short Answer Type Questions carry 3 marks each. Answer to each question should not exceed 60 words.
5. Long answer type questions carry 5 marks each. Answer to each questions should not exceed 120 words.
6. Case based questions with three sub questions carry 4 marks each. Answer to each question should not exceed 100 words.
7. Map based questions carry 5 marks with two parts, History (2 marks) and Geography (3 marks).
8. There is no overall choice in the question paper. However, an internal choice has been provided in a few questions. Only one of the choices in such questions has to be attempted.

History and Civics (40 Marks)

- Q.01** Identify the correct option that describes the Act given below.
 (i) It was signed in 1707.
 (ii) It was signed between England and Scotland.
 (iii) It resulted in the formation of the 'United Kingdom of Great Britain'.
 (iv) Due to its effect England was able to impose its influence on Scotland.
Options :
 (a) Vernacular Press Act (b) Inland Emigration Act
 (c) The Act of Union (d) The Irish Act of Union (1)
- Q.02** The official religion of Sri Lanka is
 (a) Buddhism (b) Islam (c) Hinduism (d) Christianity (1)
- Q.03** Which of the following could be considered as the advantage of Federalism and decentralization?
 (a) It prevents government overreach and takeovers.
 (b) It allows different localities to adopt their policies to the needs and wishes of local population.
 (c) It prevents the state from being able to carry out its basic functions.
 (d) It reduces the State Government's autonomy. (1)
- Q.04** **Assertion (A) :** The makers of our Constitution chose the model of a Secular State.
Reason (R) : Communalism was and continues to be one of the major challenges to the democracy in India.
 (a) Both (A) and (R) are true and (R) is the correct explanation of (A).
 (b) Both (A) and (R) are true and (R) is not the correct explanation of (A).
 (c) (A) is correct but (R) is wrong.
 (d) (A) is wrong but (R) is correct. (1)
- Q.05** You are a feminist and want to suggest your government some measures for the empowerment of women in politics. Which of the following measures would be the best from your end?
 (a) Financial support. (b) Fair representation in the Elected Bodies.
 (c) Equal wages for both men and women. (d) Strict laws to control domestic violence. (1)
- Q.06** Study the picture and answer the questions that follows :



- Which of the following events was related to the above image of Gandhiji?
 (a) Non-Cooperation Movement (b) Kheda Satyagraha (c) Dandi March (d) None of these (1)

- Q.07** In the context of democracies, which of the following idea is correct – democracies have successfully eliminated:
 (a) Conflicts among people.
 (b) economic inequalities among people
 (c) differences of opinion about how marginalized sections are to be treated.
 (d) the idea of political inequality. (1)

- Q.08** Democratic government is legitimate because –
(a) It accommodates social diversities.
(b) It is people's own government elected by the people.
(c) It addresses socio-economic and political problems.
(d) All the above. (1)

- Q.09** Arrange the following statements in sequential order based on the events that shaped India and the World of Print.
(i) The Vernacular Press Act was passed.
(ii) Rashsundari Debi wrote and published her autobiography 'Amar Jiban'.
(iii) Jyotiba Phule wrote about the injustices of the Caste System in his book 'Gulamgiri'.
(iv) The first printed edition of the Ramcharitmanas of Tulsidas came out from Calcutta.

Options :

- (a) iv, iii, ii, i (b) ii, i, iv, iii
(c) i, iv, iii, ii (d) I, ii, iii, iv (1)
- Q.10** Consider the statements given below and choose the correct answer.
Statement I : Trade and cultural exchange always went hand in hand.
Statement II : Jainism emerged from Eastern India and spread in several directions through interesting points of the silk routes.
(a) Both the statements, I and II are correct.
(b) Both I and II are incorrect.
(c) Statement I is incorrect, but II is correct.
(d) Statement I is correct, but II is incorrect. (1)

- Q.11** Choose the right option to fill in the blank.
Decisions in a democracy are more acceptable to the people because they are
(a) Taken swiftly. (b) Taken by giving privileges to some people.
(c) Taken through elites' votes. (d) Taken after following due processes. (1)

- Q.12** Which of the following measures does not establish Sinhala Supremacy in Sri Lanka.
(a) Sinhala is the only official language. (b) Preferential policies for government jobs.
(c) The state shall protect and foster Buddhism. (d) Equal political rights to Sri Lankan Tamils. (1)

- Q.13** Study the map thoroughly and answer the questions that follow :



- (a) What is the language spoken by the people of the shaded part in the Southern Belgium?
(b) What is the name of the city that is shaded in the north of Belgium? (2)
- Q.14** Why was Simon Commission sent to India? Why was it boycotted by the Indians? (2)

OR

- What were the causes for the withdrawal of the Non-Cooperation Movement? (2)
- Q.15** Mention any two features of 'Secularism' described in the Indian Constitution. (2)
- Q.16** Explain any three effects of the Non-Cooperation Movement on the economy of India. (3)
- Q.17** Describe any three features of federalism incorporated in the Indian Constitution. (3)
- Q.18** How did nationalism aligned with imperialism become the cause of the First World War? Explain. (5)

OR

- "Culture played an important role in creating the idea of the nation, in Europe." Explain with examples. (5)
- Q.19** Describe the necessity of political parties in modern democracy. (5)

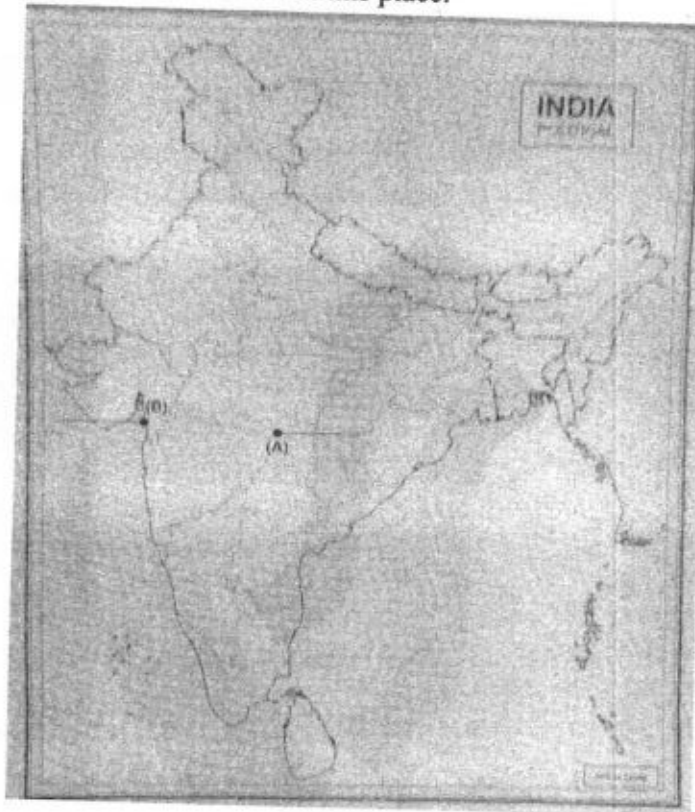
OR

- What is a political party? What are different challenges before the political parties? (1+4)
- Q.20** Read the source given below and answer the questions that follow : (4)

New forms of popular literature appeared in print, targeting new audience. Booksellers employed peddlers who roamed around villages, carrying little book for sale. There were almanacs or ritual calendars, along with ballads and folktales. In England, penny chapbooks were carried by petty pedlars known as chapmen, and sold for a penny, so that even the poor could buy them.

- (a) What is an Almanac? (1)
(b) What is a chapbook? (1)
(c) Give any two examples of new form of literature that were available to readers in Europe in the eighteenth century. (2)

- Q.21 Two features (A) and (B) are marked on the given outline political map of India. Identify these features with the help of information and write their correct names in the answer-sheet. (2)
- (A) Indian National Congress Session was held at this place in December, 1920.
 (B) Mahatma Gandhi broke the Salt Law at this place.



Geography (20 Marks)

- Q.22 Identify the soil with the help of the following clues. (1)
- The soils are made up of extremely fine clayey material.
 - They are well known for their capacity to hold moisture.
 - They develop deep cracks during the hot weather season.
- (a) Alluvial soils (b) Laterite soils (c) Black soils (d) Arid soils
- Q.23 **Assertion (A) :** In Sariska Tiger Reserve, Rajasthan, villagers have fought against mining by citing the Wildlife Protection Act. (1)
- Reason (R) :** The famous Chipko Movement in the Himalayas has successfully resisted deforestation in several areas.
- A is true but R is false.
 - A is false but R is true.
 - Both A and R are true and R is the correct explanation of A.
 - Both A and R are true, but R is not the correct explanation of A.
- Q.24 Which of the following provides the most favourable condition for growth of railways? (1)
- Northern Plains
 - Himalayan Mountains
 - Sandy Plains of Rajasthan
 - Swamps of Gujarat
- Q.25 Describe the geographical conditions required for the cultivation of jute under the following heads. (1)
- Climate
 - Soil
- Q.26 Non-conventional sources of energy are the sources of energy for the future. Justify the statements in three points. (2)
- Q.27 The economic strength of a country is measured by the development of manufacturing industries. Substantiate the statement. (5 points) (5)

OR

Although industries contribute significantly to India's economic development, the increase in pollution and resulting degradation of the environment cannot be overlooked. Suggest any 5 steps to minimize the environmental degradation caused by industries.

- Q.28 **Read the source given below and answer the questions that follow:**

Multi purpose projects and large dams have also been the cause of many new environmental movements like the 'Narmada Bachao Andolan' and the 'Tehri Dam Andolan' etc. Resistance to these projects has primarily been due to large scale displacement of local communities.

Many thought that given the disadvantages and rising resistance against the multi-purpose projects, water harvesting system was a viable alternative, both socio-economically and environmentally. In ancient India, along with the sophisticated hydraulic structures, there existed an extraordinary tradition of water harvesting system.

In hill and mountainous regions, people built diversion channels like the 'guls' or 'kul's' of Western Himalayas for agriculture. In the flood plains of Bengal, people developed inundation channels to irrigate their fields. In arid and semi-arid regions, agricultural fields were converted into rain fed storage structures that allowed the water to stand and moisten the soil like the 'Khadins' in Jaisaler and 'Johads' in other parts of Rajasthan.

28. (i) What was the primary cause of environmental movements against Multi-purpose projects and large dams? (1)

28. (ii) What are 'Khadins'? (1)
 28. (iii) Explain why water harvesting system has been considered a viable alternative to Multi purpose projects. (2)

- Q.29** On the given political map of India locate and label **any three** of the following.
 (i) Bailadila iron ore mine (ii) Tehri dam (iii) Kandla sea port (iv) Noida Software Technology Park (3)

Economics (20 Marks)

- Q.30** Which of the following term is defined as the average expected length of life of a person at the time of the birth? (1)
 (a) Birth Rate (b) Life Expectancy (c) Life Span (d) Mortality Rate

- Q.31** Sheetal owns a small flower shop near a temple. She wants to expand her shop by keeping exotic flowers and flower bouquets. To whom she should approach for a very short term credit? (1)
 (a) Money Lenders as they provide short term credit (b) Banks as they charge low interest
 (c) Cooperatives as they do not require collateral (d) None of the above

- Q.32** Removing barriers or restrictions set by the government is known as ----- . (1)
 (a) Globalisation (b) Disinvestment (c) Privatisation (d) Liberalisation

- Q.33** Which of the following statements held that workers are exploited in the unorganised sector? (1)
 Identify the correct option.
 (i) There are no fixed number of working hours.
 (ii) They do not get other allowances apart from the daily wages.
 (iii) They can be asked to leave the job at any time.
 (iv) Workers are registered by the government and have to follow the rules and regulations.

Codes:

- (a) Both i) and ii) (b) Both ii) and iii)
 (c) i), ii) and iii) (d) Only iv)
- Q.34** Tax on imports is an example of: (1)
 (a) Terms of Trade (b) Collateral (c) Trade Barriers (d) Foreign Trade

- Q.35** Explain how public sector contributes to the economic development of a nation. (3)

OR

Mention the main aim of MGNREGA, 2006 and why do you think it is referred to as 'Right to Work'?

- Q.36** Analyse the table given below and answer the following questions:

YEAR	PRIMARY	SECONDARY	TERTIARY
2000	52,000	48,500	1,33,500
2013	8,00,500	10,74,000	38,68,000

- (a) What is the basic conclusion you can draw from the above table? (1)
 (b) In India, the share of agriculture in GDP has declined at a very fast rate in recent years. What is the reason behind this? (2)
- Q.37** Distinguish between formal and informal sources of credit giving three points of distinction. Explain the role of Reserve Bank of India in supervising the formal sources of credit. (2+3=5)

OR

- (a) "Cheap and affordable credit is crucial for the country's development." Explain. (3)
 (b) Explain the reasons why Bank and Cooperatives must increase their lending particularly in rural areas. (2)

- Q.38** Read the source given below and answer the questions that follow:

For comparing countries, their income is considered to be one of the most important attributes. Countries with higher income are more developed than others with less income. This is based on the understanding that more income means more of all things that human beings need. Whatever people like, and should have, they will be able to get with greater income. So, greater income itself is considered to be one important goal. Now, what is the income of the country? Intuitively, the income of the country is the income of all the residents of the country. This gives us the total income of the country. However, for comparison between countries, total income is not such a useful measure. Since, countries have different populations, comparing total income will not tell us what an average person is likely to earn. Are people in one country better off than others in a different country? Hence, we compare the average income which is the total income of the country by its total population. The average income is also called per capita income. In World Development Reports, brought out by the World Bank, this criteria is used in classifying countries. Countries with per capita income of \$49,300 per annum and above in 2019, are called high income or rich countries and those with per capita income of \$ 2500 or less are called low income countries. The rich countries, excluding countries of Middle East, and certain other small countries are generally called developed countries.

- (a) Explain the significance of per capita income. (2)
 (b) What are the classifications of countries based on per capita income, and which entity is responsible for determining these classifications? (2)



General Instructions:

1. Please read the instructions carefully.
2. This Question Paper consists of 21 questions in two sections: **Section A & Section B.**
3. Section A has Objective type questions whereas Section B contains Subjective type questions.
4. Out of the given (5 + 16 =) 21 questions, a candidate has to answer (5 + 10 =)15 questions in the allotted (maximum) time of 2 hours.
5. All questions of a particular section must be attempted in the correct order.
6. **SECTION A - OBJECTIVE TYPE QUESTIONS (24 MARKS):**
 - i. This section has 05 questions.
 - ii. Marks allotted are mentioned against each question/part.
 - iii. There is no negative marking.
 - iv. Do as per the instructions given.
7. **SECTION B – SUBJECTIVE TYPE QUESTIONS (26 MARKS):**
 - i. This section has 16 questions.
 - ii. A candidate has to do 10 questions.
 - iii. Do as per the instructions given.
 - iv. Marks allotted are mentioned against each question/part.

Section A: Objective Type Questions

Q.1 Answer any 4 out of given 6 questions on Employability skills. (1x4=4 marks)

- (i) _____ is a force within an individual which drives people to do the things. (1)
- (ii) Shiv has selected a folder in D: drive. He clicked on the folder and hold mouse button down then moved it to new location then he released the mouse button. Here Shiv has performed which of the following mouse action? (1)
(a) Hover (b) Double click (c) Drag and Drop (d) Selection
- (iii) **Assertion (A)** : Prajakta has her own beauty saloon in her local areas. She hired two women in her saloon. (1)
Reason (R) : She is helping society to grow.
(a) Both A and R are correct and R is the correct explanation of A
(b) Both A and R are correct but R is NOT the correct explanation of A
(c) A is correct but R is not correct
(d) A is not correct but R is correct
- (iv) Dhruvin is preparing for exam. He avoids time wasters like chatting on phone, surfing gossip sites etc. and focus on more important things. This is one of the steps of effective time management, identify the same: (1)
(a) Organizing (b) Prioritising (c) Controlling (d) Tracking
- (v) Aave is working as team leader. He sent a message on WhatsApp for a sort meeting after their dispersal in office. But many of his team members not attended the meeting. This is an example of _____. (1)
(a) Physical Barrier (b) Cultural Barrier (c) Organization Barrier (d) Linguistic Barrier
- (vi) _____ is the development that satisfies the needs of the present without compromising the capacity of future generations, guaranteeing the balance between economic growth, care for the environment and social well-being. (1)
(a) Social Development (b) Sustainable Development
(c) Financial Development (d) Cultural Development

Q.2 Answer any 5 out of the given 6 questions (1x5=5 marks)

- (i) **Assertion (A)** : Life without machine is unimaginable today. (1)
Reason(R) : Machines are made with an intent of irritating humans.
(a) Both A and R are correct and R is the correct explanation of A
(b) Both A and R are correct but R is NOT the correct explanation of A
(c) A is correct but R is not correct
(d) A is not correct but R is correct

- (ii) Kriza is planning for a trip in Kerala in winter break. She searched hotels for the same. After that she is getting notification about the same and advertisements in websites, apps and many more. Which of the following term is perfectly match with this example? (1)
(a) AI Access (b) Data Privacy (c) AI Ethics (d) AI Manners
- (iii) A _____ is essentially a system of organizing machine learning algorithms to perform certain tasks. (1)
(a) Natural Networks (b) Neutral Networks (c) Neural Networks (d) Neuron Networks
- (iv) In neural network _____ layers, the processing occurs. (1)
(a) Input (b) Hidden (c) Output (d) Top
- (v) _____ is a domain-specific language used in programming and is designed for managing data held in different kinds of data structure. (1)
(a) CSV (b) Python (c) Spreadsheet (d) SQL
- (vi) Which of the following text normalization step considers every word, number or special character separately? (1)
(a) Sentence Segmentation (b) Tokenization (c) Stemming (d) Lemmatization

Q.3 Answer any 5 out of the given 6 questions (1x5=5 marks)

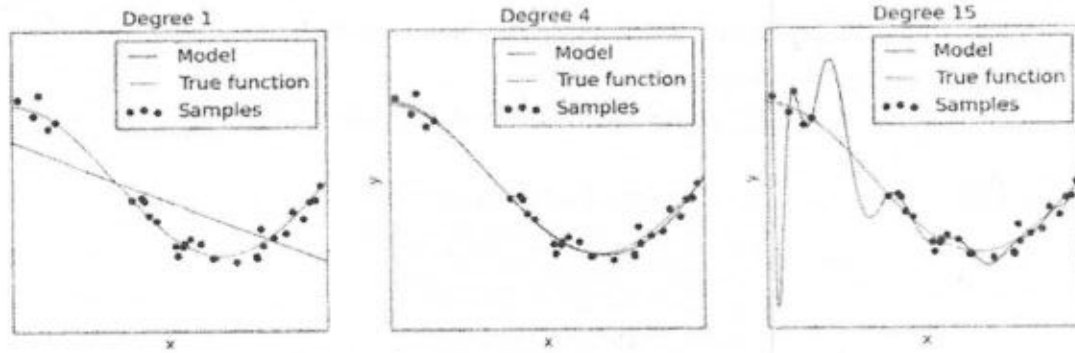
- (i) **Statement A** : In today's time, every technology around us is AI.
Statement B : An AI machine too gets trained first on the training data and then optimises itself according to its own experiences. (1)
(a) A is correct (b) B is correct
(c) Both are correct (d) Both are incorrect
- (ii) In most of the virtual assistants female voices are more preferred over any other voice. This is an example of _____. (1)
(a) AI Bias (b) Gender Specification (c) Voice Filter (d) Neural Network
- (iii) Which of the following domain of AI is working around alphanumeric information, numbers and statistics? (1)
(a) Data Science (b) NLP (c) CV (d) Neural Network
- (iv) As humans have eyes, so they can see anything and analyse it. Select an appropriate option which adds a functionality like that in machines? (1)
(a) Natural Language Processing (b) Computer Vision (c) Data Science (d) Evaluation
- (v) All the virtual assistants like Alexa, Google Assistants, Siri etc. can taken as _____ (1)
(a) Smart Bot (b) Script Bot (c) Robot (d) Programming Bot
- (vi) The recorded result of comparison between prediction and reality is known as _____. (1)
(a) Precision (b) F1 Score (c) Confusion Matrix (d) Accuracy

Q.4 Answer any 5 out of the given 6 questions (1x5=5 marks)

- (i) Which of the following states intention of machine learning? (1)
(a) Ability of machine to recognize human's face, move objects and understand, command given by humans then perform the tasks.
(b) Enable machines to learn by themselves using the data provided and make accurate predictions/Decisions.
(c) Machine is trained with huge amounts of data which helps to train data
(d) Enable machines to write algorithm.
- (ii) Which of the following is the final stage of AI Project cycle? (1)
(a) Problem Scoping (b) Data Acquisition (c) Evaluation (d) Data Exploration
- (iii) Extracting data can be offense. (1)
(a) Yes (b) No (c) May be (d) None
- (iv) Every photograph is in digital form is made up of _____. (1)
(a) Lines (b) Dots (c) Pixels (d) Graphs

- (v) Spam filtering is an example of (1)
 (a) Text Classification (b) Automatic Summarization
 (c) Sentiment Analysis (d) Bag of words

- (vi) Observe the given images: (1)



- In above diagram, what the dots represents:
 (a) Actual Output (b) Samples
 (c) Model Efficiency (d) None of these

Q.5 Answer any 5 out of the given 6 questions (1x5=5 marks)

- (i) In Computer vision, input given to machine can be (1)
 (a) Numeric & Alphanumeric (b) Photographs, Videos
 (c) Spoken words only (d) Text
- (ii) The condition which predicts all predictions as No and reality is also No. this condition is known as _____ (1)
 (a) True Negative (b) False Negative
 (c) Negative True (d) All Negative
- (iii) Which of the following domain of AI is used by the airlines companies for strategic areas of improvements: (1)
 (a) Data Science (b) Computer Vision
 (c) Natural Language Processing (d) Neural Network
- (iv) Which of the following is the first step of bag of words algorithm? (1)
 (a) Create Dictionary (b) Text Normalization
 (c) Create Document vectors (d) Stemming
- (v) Which of the process removes the affixes from the corpus? (1)
 (a) Overfitting (b) Stemming
 (c) Underfitting (d) Accuracy
- (vi) Which one of the following scenario result in a high false negative cost? (1)
 (a) Viral Outbreak (b) Spam Filter
 (c) flood (d) Mining

Section B: Subjective Type Questions

Answer any 3 out of the given 5 questions on Employability skills (2x3=6 marks)

Answer each question in 20-30 words.

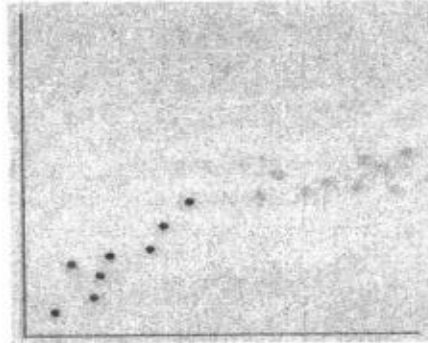
- Q.6** What are the various elements of communication cycle? (2)
- Q.7** Mr E Shreedharan, Former Managing Director, Delhi Metro Rail corporation Ltd, was a self-motivated and energetic person. What are the steps for building self-motivation? (2)
- Q.8** Enlist and explain the major type of computer viruses in short. (2)
- Q.9** How does an entrepreneur help society? What they do when they run a business? (2)
- Q.10** What do you mean by organic farming? Explain in short. (2)

Answer any 4 out of the given 6 questions in 20 – 30 words each

(2x4=8 Marks)

- Q.11** Identify the intelligence demonstrating by the people: (2)
- (a) Shreshthi is very good dancer. She is using her body for perfect moves
 - (b) Krishna is writing poems. He is able to find the meaning words, the orders of words, inflection and meter of words
 - (c) Dev is an accountant in a multinational company. He is very talented in the field of accounts and managing the company's finance effectively
 - (d) Mr. Shivanand is a politician. He has good ability to interact to others.

- Q.12** Observe the below given graph and explain the model in short. (2)

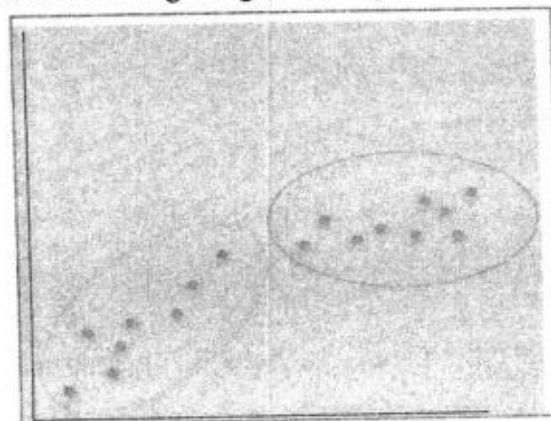


- Q.13** How data science is useful in genetics and genomics? (2)
- Q.14** Computer vision plays a vital role in making the home smarter. How? (2)
- Q.15** Explain text classification with example. (2)
- Q.16** What is accuracy? Explain along with formula. (2)

Answer any 3 out of given 5 questions in 50-80 words each:

(4x3 =12 marks)

- Q.17** Explain any 4 applications of Artificial Intelligence around us.
- Q.18** Nitya wants to acquire data from various sources for her new AI model. Explain her following:
(a) Data Features (b) Sources to collect data
- Q.19** Observe the following images and explain the related models:



- Q.20** Explain the following with respect to normalization with example:
(a) Sentence Segmentation (b) Tokenisation
- Q.21** An AI model made the following match winning prediction for a cricket match:

	Reality(T)	Reality(F)
Prediction(T)	23	22
Prediction(F)	11	12

- (a) Identify the correct predictions and wrong predictions made by machine
- (b) Calculate precision, recall and F1 score.