

DELHI PUBLIC SCHOOL, BHILAI (C.G.)**DATE : 08-03-2018****ANNUAL EXAMINATION, 2018****Time : 2 ½ Hours****CLASS : IX****FOUNDATION OF INFORMATION TECHNOLOGY****M.M : 40****No. of printed page : 1****NOTE: All questions are compulsory.****1) Explain the following electronic devices/ parts used with computer.****1*6=6**

- 1) MICR 2) LIGHT PEN 3) PLOTTER 4) ALU 5) MODEM 6) OMR

2) State True or False:

1. Virus is type of Malware.
2. There are 65000 rows in Open Office Calc.
3. Mail merge is the facility of word processing software.
4. Copyright & Patent is one and the same thing.
5. Words that are misspelled appear with blue wavy lines under lines as you type.
6. Scanner is an output device.

1*6=6**3) Answer the following questions: (short answer)****1*10=10**

1. What is Intellectual Property Right?
2. Write any two functions of operating system.
3. Define the term soft lifting?
4. Describe any two statistical functions?
5. What is a computer program?
6. Name any two types of spreadsheet chart?
7. Describe any two views of Presentation in Office Impress.
8. What are the various text alignments in Office Writer?
9. Name any two utility software?
10. What do you mean by templates?

4) Answer the following questions (long answer)**2*5=10**

1. Differentiate between Open Office Calc. & Open Office Impress.
2. What is Cell Reference? and describe any two types of cell referencing.
3. Explain Plagiarism & Piracy?
4. Describe various types (any 4) of secondary memory.
5. Describe various component of spreadsheet chart?

5) Draw & describe the Functional Block diagram of computer**4****6) Draw the Table given below and answer the following questions @ desired location.****4**

	A	B	C	D	E	F	G	H
1	NAME	MATHS	SCIENCE	SOC.SCI.	HINDI	ENGLISH	FOIT	
2	SNEHA	49	33	36	31	37	44	
3	VINAMRA	23	46	44	36	22	45	
4	RASHI	14	38	49	41	49	43	
5	ROHIT	47	36	42	46	47	29	
6	MEENAL	44	35	30	40	50	48	
7								

- 1) Write the formula/ function to calculate total marks obtain by ROHIT in H5 cell.
- 2) Write the formula/ function to calculate subject mean of Maths in B7 cell.
- 3) Write the formula/ function to calculate Aggregate % of MEENAL IN H6 cell.
- 4) Write the steps to obtain the pie chart based on above table data.

@@@@@@@@@@@@@@@@

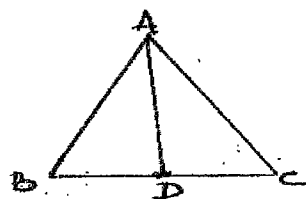
General Instructions—

- (i) All Questions are compulsory.
- (ii) The question paper consists of 30 questions, divided into 4 sections A, B, C and D.
- (iii) Section A contains 6 questions of 1 mark each, section B contains 6 questions of 2 marks each, section C contains 10 questions of 3 marks each and section D contains 8 questions of 4 marks each.
- (iv) There is no overall choice. However, internal choices have been provided in four questions of 3 marks each and three questions of 4 marks each. You have to attempt only one of the alternatives in all such questions.

SECTION A**Question Nos. 1 to 6 carry 1 mark each :**

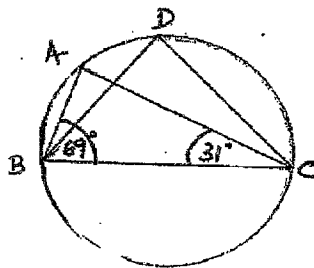
- 1) Is the number $(3 - \sqrt{7})(3 + \sqrt{7})$ rational or irrational?
- 2) In which quadrants the points $(3, -5)$ and $(-4, 5)$ lie?
- 3) Find a , if linear equation $3x - ay = 6$ has one solution as $(4, 3)$
- 4) Area of $\triangle ABC$ is 14 cm^2 .

If AD is the median to side BC, find area ($\triangle ACD$)



- 5) In the given figure, $\angle ABC = 69^\circ$, $\angle ACB = 31^\circ$.

Find $\angle BDC$



- 6) If the median of the observations $x, x + 3, x + 5, x + 7, x + 10$ is 9, find the fourth observation.

SECTION B**Question Nos. 7 to 12 carry 2 marks each :**

- 7) Give equations of two lines passing through $(3, 10)$
- 8) In a quadrilateral, three angles are in the ratio of $3:3:1$ and the fourth angle is 80° . Find the measures of equal angles.
- 9) Find the median and mode of the data :
42, 52, 41, 39, 48, 52, 46, 62, 54, 40, 96, 52, 98, 40, 60
- 10) Find the mean of all the prime numbers lying between 20 and 30.
- 11) Following table shows the birth months of 100 students of class XII.

JAN	FEB	MAR	APR	MAY	JUNE	JULY	AUG.	SEPT.	OCT.	NOV	DEC.
5	6	7	8	10	14	7	10	7	8	10	8

Find the probability that a student was born in May or June.

- 12) The percentage of marks obtained by a student in the monthly unit tests are given below :

UNIT TEST	I	II	III	IV	V
PERCENTAGE OF MARKS OBTAINED	69	71	73	68	74

Based on this data, find the probability that

- i) the student gets more than 70% marks in a test.
- ii) the student gets less than 60% marks in a test.

SECTION C

Question Nos. 13 to 22 carry 3 marks each :

- 13) If $\frac{5+2\sqrt{3}}{7+4\sqrt{3}} = a + b\sqrt{3}$, find the values of 'a' and 'b'.

(OR)

Prove that : $\frac{1}{2+\sqrt{3}} + \frac{2}{\sqrt{5}-\sqrt{3}} + \frac{1}{2-\sqrt{5}} = 0$

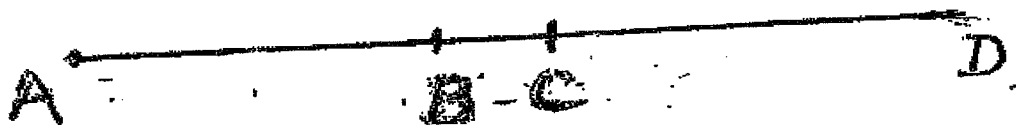
- 14) If $x + y + z = 0$, then show that $x^3 + y^3 + z^3 = 3xyz$

(OR)

Factorise : $2y^3 + y^2 - 2y - 1$

- 15) Draw a square ABCD whose vertices are $A(1,2)$, $B(-7,2)$, $C(-7, -6)$ and $D(1, -6)$ respectively.

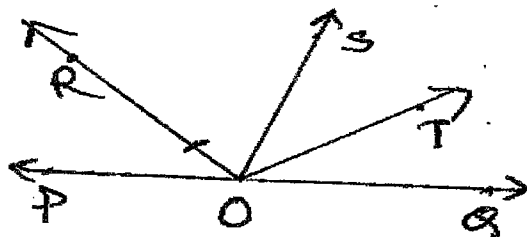
- 16) In the given figure, if $AC=BD$, then prove that $AB=CD$.



- 17) If a transversal intersects two lines such that the bisectors of a pair of corresponding angles are parallel, then prove that the two lines are parallel.

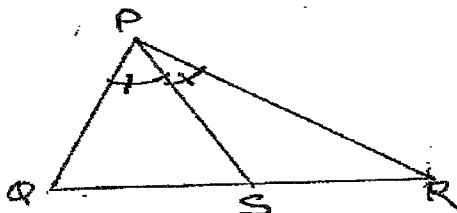
(OR)

In the given figure, ray OS stands on a line POQ. Ray OR and ray OT are angle bisectors of $\angle POS$ and $\angle SOQ$, respectively. If $\angle POS = x$ find $\angle ROT$



- 18) In the given figure, $PR > PQ$ and PS bisects $\angle QPR$.

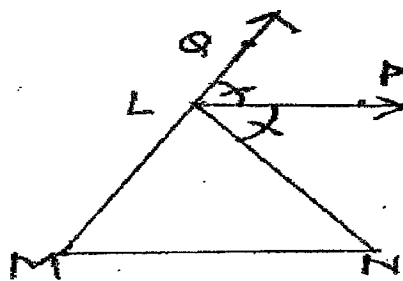
Prove that $\angle PSR > \angle PSQ$



(OR)

In the given figure, $\triangle LMN$ is an isosceles triangle with $\angle M = \angle N$ and LP bisects $\angle NLQ$.

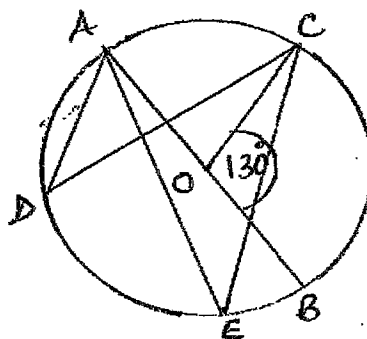
Prove that $LP \parallel MN$.



- 19) In the given figure, O is the centre of the circle

and $\angle BOC = 130^\circ$.

Find the measure of $\angle ADC$ and $\angle AEC$



- 20) Construct an angle of measure 105° using compass. (No steps of construction)

- 21) If the non-parallel sides of a trapezium are equal then prove that it is a cyclic trapezium.

- 22) The following table gives the life times of 400 neon lamps.

Life time (in hours)	Number of lamps
300 – 400	14
400 – 500	56
500 – 600	60
600 – 700	86
700 – 800	74
800 – 900	62
900 – 1000	48

Represent the given information with the help of a Histogram.

SECTION D

(Question nos. 23 to 30 carry 4 marks each)

- 23) Represent $\sqrt{5.2}$ on the number line.

(OR)

Represent $\sqrt{10}$ on the number line and justify its construction.

- 24) Find the value of k , if $(x - 3)$ is a factor of $p(x) = 2x^3 - 5x^2 + 3x + k$.
- 25) Draw the graph of the linear equation $x + 2y = 8$ and find the coordinates of the vertices of the triangle so formed by the given line and the coordinate axes.
- 26) A hemispherical dome of a building needs to be painted. If the circumference of the base of the dome is 17.6 m, find the cost of painting it, given the cost of painting is ₹ 5 per 100 cm².
(use $\pi = 22/7$)

(OR)

A square piece of paper of side 12 cm is rolled to form a cylinder. Find the curved surface area of the cylinder.

- 27) XY is a line parallel to side BC of a ΔABC . If $BE \parallel AC$ and $CF \parallel AB$ meet XY at E and F respectively, show that $\text{ar}(ABE) = \text{ar}(ACF)$

(OR)

If a triangle and a parallelogram are on the same base and between the same parallels, then prove that the area of the triangle is equal to half the area of the parallelogram.

- 28) A field is in the shape of a trapezium whose parallel sides are 25 m and 10 m. The non-parallel sides are 14 m and 13 m. Find the area of the field.
- 29) Construct a ΔXYZ in which $\angle Y = 30^\circ$, $\angle Z = 90^\circ$ and $XY + YZ + ZX = 11$ cm.
- 30) A village, having a population of 4000, requires 150 litres of water per head per day. It has a tank measuring 20 m \times 15 m \times 6 m. For how many days will the water of this tank last?

General Instructions :

1. The question paper is divided into three sections.

Section A: Reading 20 marks

Section B: Writing & Grammar 30 marks

Section C: Literature & Long Reading Text 30 marks

2. All questions are compulsory.

3. All questions of a section must be attempted in the correct order.

SECTION A : READING

20 marks

1. Read the passage given below and answer the questions that follow:

(8marks)

School Breaks Up

1. With dry lips, parched throat, and ink stained fingers, and exhaustion on one side and exaltation on the other, Swaminathan strode out of the examination hall on the last day. Standing in the verandah, he turned back and looked into the hall and felt slightly uneasy. He would have felt more comfortable if all the boys had given their papers as he had done, twenty minutes before time. With his left shoulder resting against the wall, Sankar was lost to the world. Rajam, sitting under the second ventilator, between two third form boys, had become a writing-machine. Mani was still gazing at the rafters, scratching his chin with the pen. Another classmate was leaning back in his seat, revising his answers. One supervisor was drowsing in his chair; another was pacing up and down with an abstracted look in his eyes. The scratchy noise of active nibs, the rustle of papers, and the clearing of the throats, came through the brooding silence of the hall.
2. Swaminathan suddenly wished that he had not come out so soon. But how could he have stayed in the hall longer? The Tamil paper was set to go on till five o'clock. He had found himself writing the last line of the last question at four thirty. Out of the six questions, he had answered the first question to his satisfaction, the second was doubtful, the third was satisfactory, the fourth he knew was clearly wrong (but then, he did not know the correct answer). The sixth answer was the best of the lot. It took only a minute to answer it. He had read the question at two minutes to four thirty, started answering a minute later, and finished it at four thirty. The question was: What moral do you infer from the story of the Brahmin and the Tiger?
3. A Brahmin was passing along the edge of a pond. A tiger hailed him from the other bank and offered him a gold bangle. The brahmin at first declined the offer, but when the tiger protested its innocence and sincerity and insisted upon his taking the bangle, he waded through the water. Before he could hold out his hand for the bangle, he was inside the tiger.
4. Swaminathan had never thought that this story contained a moral. But now he felt that it must have one since the question paper mentioned it. He took a minute to decide whether the moral was : "We must never accept a gold bangle when it is offered by a tiger" or "Love of gold bangle cost one one's life". He saw more logic in the latter and wrote it down. After writing, he had looked at the big hall clock. Half an hour more! What had he to do for half an hour more! What had he to do for half an hour? But he felt awkward to be the first to go out. Why could not the others be as quick and precise as he?
5. He had found it hard to kill time. Why wasn't the paper set for two and a half hours instead of three? He had looked wistfully at the verandah outside. If only he could pluck up enough courage to hand in the paper and go out – he could have no more examination for a long time to come – he could do what he pleased roam about the town in the evenings and afternoons and mornings – throw away the books – command Granny to tell endless tales. He had seen a supervisor observing him and had at once pretended to be busy with the answer paper.

Attempt any eight of the following questions on the basis of the passage you have read. (1×8=8 marks)

- a) How did Swaminathan stride out of the examination hall on the last day?
- b) Why did Swaminathan feel slightly uneasy standing in the verandah?
- c) What did he suddenly wish?
- d) Why did the Brahmin lose his life?

- e) Why did Swami go with the second option of the moral of the story?
- f) What were the different sounds that could be heard in the silence of the examination room?
- g) What did Swaminathan do when he saw a supervisor observing him?
- h) What did Swaminathan long to do after his examinations were over?
- i) Find the word from the passage which means 'extreme happiness.' (Para 1)

Q 2. Read the passage given below and answer the questions that follow:

(12 marks)

DANGER FOR CRUISE SHIPS

1. Scientists say that despite a century of technological gains, ships rely heavily on a detection method as old and as fallible as sailing itself. Take for example the dangers posed by icebergs. "Icebergs are very dangerous objects because they drift, they are not stationary, and in higher wave conditions they can be masked or hidden from a ship's radar. That's why they are still a danger today," says Michael Hicks of the International Ice Patrol (IIP). Icebergs can be healthy leviathans, veiled by rough seas, fog or low light. "There are still invisible threats," says Hicks.
2. The odds of hitting an iceberg today are about one in 2,000- twice as remote as they were in April 2012 when the greatest ship of its time took, 1,514 people to a watery grave, estimates Brian Hill, a specialist with Canada's National Research Council (NRC). On average two icebergs collisions occur each year, and a near – disaster involving a cruise ship in 2007 showed that an unsinkable vessel has yet to be built.
3. Formed in 1931, the year after the Titanic's demise, the IIP patrols half a million square nautical miles (1.7 million sq. kilometers) of the northwest Atlantic. Its beat includes "Iceberg Alley", the shipping lanes off the Great Banks of Newfoundland and the east coast of Labrador where icebergs, breaking off from Greenland, prowl between February and July. The agency has resorted to unorthodox measures in its attempts to track the wandering giants. It tried to paint icebergs red, but the colour washed off. It tried to drop radio transmitters on them – a mighty task for a plane flying over at up to 180 knots (350 mph) .It even tried bombing. "Just a few pieces broke off", says Hicks. "It didn't have much effect".
4. A later attempt to detonate explosives planted inside an iceberg was slightly more effective, "but", says Hicks. So the IIP switched all its efforts to early warning. It uses radar – equipped Hercules aircraft and collects reports from passing ships and satellites. Not a single skipper who heeded its warnings has hit an iceberg, says Hicks proudly. Man has huge faith in space technology, but satellites are of limited value here as they cannot tell smaller icebergs from ships. "There is always a visual recognition issue and for very small icebergs there is always going to be that residual risk", says Mark Drinkwater, a cryosphere expert at the European State Agency (ESA).
5. According to the ship Iceberg Collision Database held by Canada's NRC, there has been a steady decline in incidents since 1913.
There were 57 iceberg collisions in the northern hemisphere from 1980 to 2005, an average of 2.3 per year – down from 170 hits or 6.8 per year in the 25 years up to 1912, adds Hill. The last passenger ship to sink with fatalities after hitting an iceberg was the Hans Hedtoft, which went down off southern Greenland in January 1959 with 95 people on board. In November 2007, the cruise ship MV Explorer sank after hitting an iceberg off the Antarctic Peninsula's northern tip. All 100 passengers and 54 crew were saved.

2.1 On the basis of your reading of the passage, answer any four the following questions in about 30-40 words each :

(2×4=8)

- (a) Why are icebergs considered dangerous objects on the sea?
- (b) Name any two measures adopted by the IIP to track the Icebergs.
- (c) Why did the use of explosives planted inside the icebergs fail?
- (d) Give two reasons why satellites have a limited value in detecting icebergs at sea.
- (e) What is 'Ice berg Alley'?

2.2 On the basis of your reading of the passage, fill in any two of the following blanks with appropriate words/phrases.

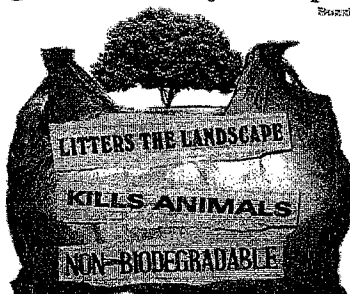
(1×2=2)

- (a) Icebergs get veiled by _____
- (b) International Ice Patrol (IIP) was formed in _____
- (c) A passenger ship that sank after hitting an iceberg _____

- 2.3. Attempt any two of the following. Find out the words that mean the same as under: (1×2 =2)
- (a) concealed/ hidden (Para 1)
- (b) violent striking together (Para2)
- (c) a gradual lessening or worsening (Para 5)

SECTION B: WRITING AND GRAMMAR (30 Marks)

- Q 3 Yesterday, you saw a cow near a garbage dump consuming food from plastic bags– a very common sight nowadays. Though plastic bags are banned, they are commonly used across the country. They pose a great threat to our health as well as our environment. Taking ideas from the MCB unit on Environment and the visual given below, write an article in about 100-120 words on the dangers caused by these plastic bags. (8 marks)



OR

You are Gauri / Gaurav. You recently visited an Old People 's Home as part of your school Outreach Programme. Write a diary entry in 100-120 words recounting the details of what you saw and how you felt. (8 marks)

- Q 4. Write a short story, in about 200-250 words, with any one set of the cues given in the boxes below. Give a suitable title to the story . (10 marks)

OR

It was late at night. Arjun was about to switch off the light and go to bed when he saw a light outside the window. On close observation he realized that it was fire _____.

Harry looked with pride at what he had created ----- a robot -----amazing feats-----sudden disorientation-----technical defect-----one human error-----devastating impact.

- Q 5. Fill in any four of the following blanks choosing the most appropriate option from the ones given below. Write the answers in your answer sheet against the correct blank numbers. (4 marks)

The first test tube baby turtle (a) _____ last month in California. The story began (b) _____ a broken turtle egg (c) _____ on the seashore. Scientists are working carefully to bring up the baby turtle which has now grown. This winter the turtle (d)_____ be returned (e) _____ the sea.

- (a) (i) was born (ii) were born (iii) is born (iv) are born
- (b) (i) where (ii) which (iii) when (iv) who
- (c) (i) is find (ii) was found (iii) are finding (iv) found
- (d) (i) might (ii) could (iii) must (iv) would
- (e) (i) to (ii) at (iii) in (iv) on

- Q 6) In the following passage one word has been omitted in each line. Write the missing word, in any four sentences of the given paragraph, along with the word that comes before and the word that comes after it in the space provided . (4 marks)

Milk is perfect food. It should form a
 (a) part of daily diet. Doctors advise never to
 (b) miss a daily glass of milk. It is good the people
 (c) of ages but it is especially needed for growing children
 (d) because of nourishing value. Milk contains
 (e) all necessary minerals and vitamins
 for a strong and healthy body.
 So drink a glass of milk every day.

	Before	Missing Word	After
Eg.	Is	a	perfect
a)	_____	_____	_____
b)	_____	_____	_____
c)	_____	_____	_____
d)	_____	_____	_____
e)	_____	_____	_____

Q 7) Rearrange any four of the following word clusters to make meaningful sentences.

(1×4=4 marks)

eg. of mankind / the habit / reading is / one of / resources / of / the greatest

The habit of reading is one of the greatest resources of mankind.

1. are / we enjoy / that / belong to us / than if / much more / they / borrowed / reading books
2. book / formality / a certain considerate / must be treated / with / a borrowed
3. no book / that / afraid to / you should / mark up / own / you are
4. should begin / everyone / a private library / youth / collecting / in
5. to the hand/your library/should be/ as well as/ free and / accessible / to the eye

SECTION-C (LITERATURE)

(30 marks)

Q 8 Read the extracts given below and answer the questions that follow. Write the answers in

your answer sheet in one or two lines only.

(1×4= 4marks)

(a) The field and the cloud are lovers

And between them I am a messenger of mercy.

I quench the thirst of the one,

I cure the ailment of the other.

- a. Name the poetic device used in the first line.
- b. Why has the rain been called a messenger of mercy?
- c. How does the rain cure the ailment of 'the other'?
- d. What is meant by 'quench'?

OR

(b) By mid-April neighbors saw a daily struggle in front of Marcy's house. Out on the side walk they saw the dog pull his leash taut, then stand and wait.

- a. What was the struggle the neighbours witnessed?
- b. Why did the dog stand and wait?
- c. What was the outcome of the struggle?
- d. What is the meaning of 'taut'?

Q 9 Answer any four of the following questions in 30-40 words each .

(2×4 = 8 marks)

- a. How did the Bishop react on learning about the betrayal by the convict?
- b. What message does the story 'How I Taught My Grandmother to Read' convey?
- c. Prevention is better than cure' - Do you think this proverb is appropriate for the poem 'Oh, I Wish I'd looked After Me Teeth'? Give reasons.
- d. Why did Bill Bramble take back his decision of leaving boxing?
- e. In what ways is Pescud like the hero of 'The Best Seller'?

Q10. Attempt any one of the following questions in 100-120 words.

(8 Marks)

- (a) Craftiness and selfishness are the so-called virtues in today's scenario, rather a key to success. Justify the statement in the light of 'Villa for sale'.

OR

- (b) "Anger is the vice that mars one's sanity" In the context of the poem 'Lord Ullin's daughter', justify the statement .

Q 11 . Answer any one of the following questions in 200-250 words.

(10 marks)

- (a) Harris always ended up making a mess. Comment on Harris' character in the light of this statement with examples from the novel.

OR

- (b) Describe the experience of the three friends while preparing the Irish stew.

DELHI PUBLIC SCHOOL, BHILAI (C.G.)
ANNUAL EXAMINATION, 2018
SOCIAL SCIENCE

DATE : 06-03-2018
CLASS : IX

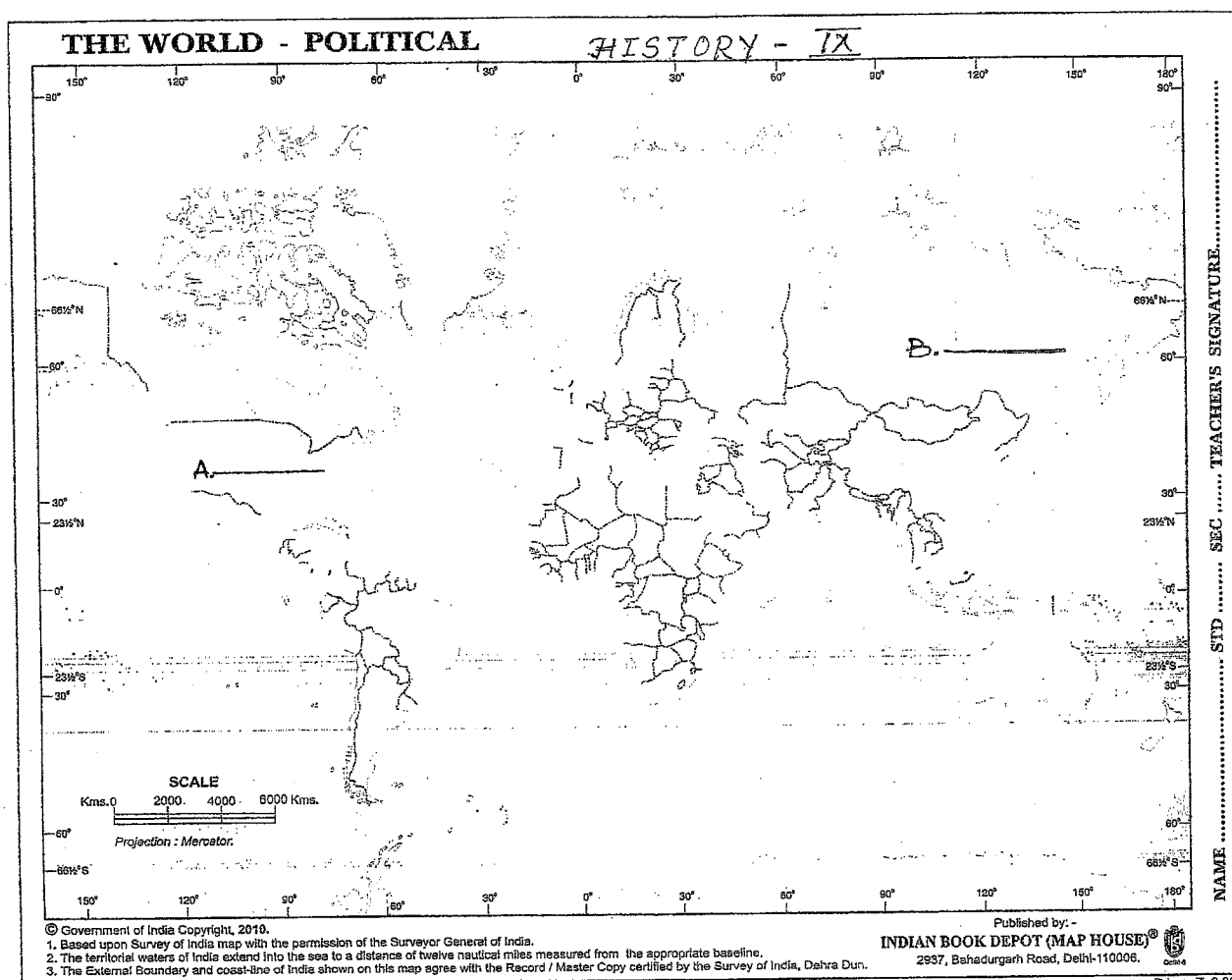
Time: 3 Hours
M.M : 80

General Instructions :

- The question paper has 27 questions in all. All questions are compulsory.
- Answer to 1 mark questions should not exceed 30 words each.
- Answer to 3 mark questions should not exceed 80 words each.
- Answer to 5 mark questions should not exceed 120 words each.
- Question no. 15 in History and Civics is a map question of 2 marks and question no.6 in Geography is a map question of 3 marks. After completion, attach the map inside the Answer book.

HISTORY & CIVICS

1. What were the Muslim reformers within the Russian empire, before the Russian Revolution (1917) called? (1)
2. Where was Adolf Hitler born in 1889? (Name the country). (1)
3. Name the African National Congress (ANC) leader, who was jailed in 1964 for treason. (1)
4. What is Constituent Assembly? (1)
5. Who is the Supreme Commander of the Indian Armed Forces? (1)
6. Who issued a 'Legal Framework Order' in August, 2002 in Pakistan? (1)
7. What powers have been given by the Indian Constitution to the President of our country? (3)
8. What is political equality? Explain through examples of any two countries, where people have been denied equal right to vote. (1+2=3)
9. What were the ideas of the liberals of Europe in the pre World War –I period, for building a strong nation? (3)
10. Who ruled France during the 'Reign of Terror'? Why did it enrage the people? (1+2=3)
11. Describe the problems faced by the Weimar Republic. 5
12. Discuss why the Maasai community of Africa lost their grazing fields. 5
13. What are Fundamental Rights? Discuss the three specific evils mentioned by the Indian Constitution, that cause exploitation of the weaker sections. (2+3=5)
14. What are general and by-elections? What are the norms and guidelines under the Model Code of Conduct, to be followed by the candidates and parties during an election? (2+3=5)
15. Identify and write the names of the countries participating in the World War – I, marked **A & B** in the World Map printed in your question paper. (2)

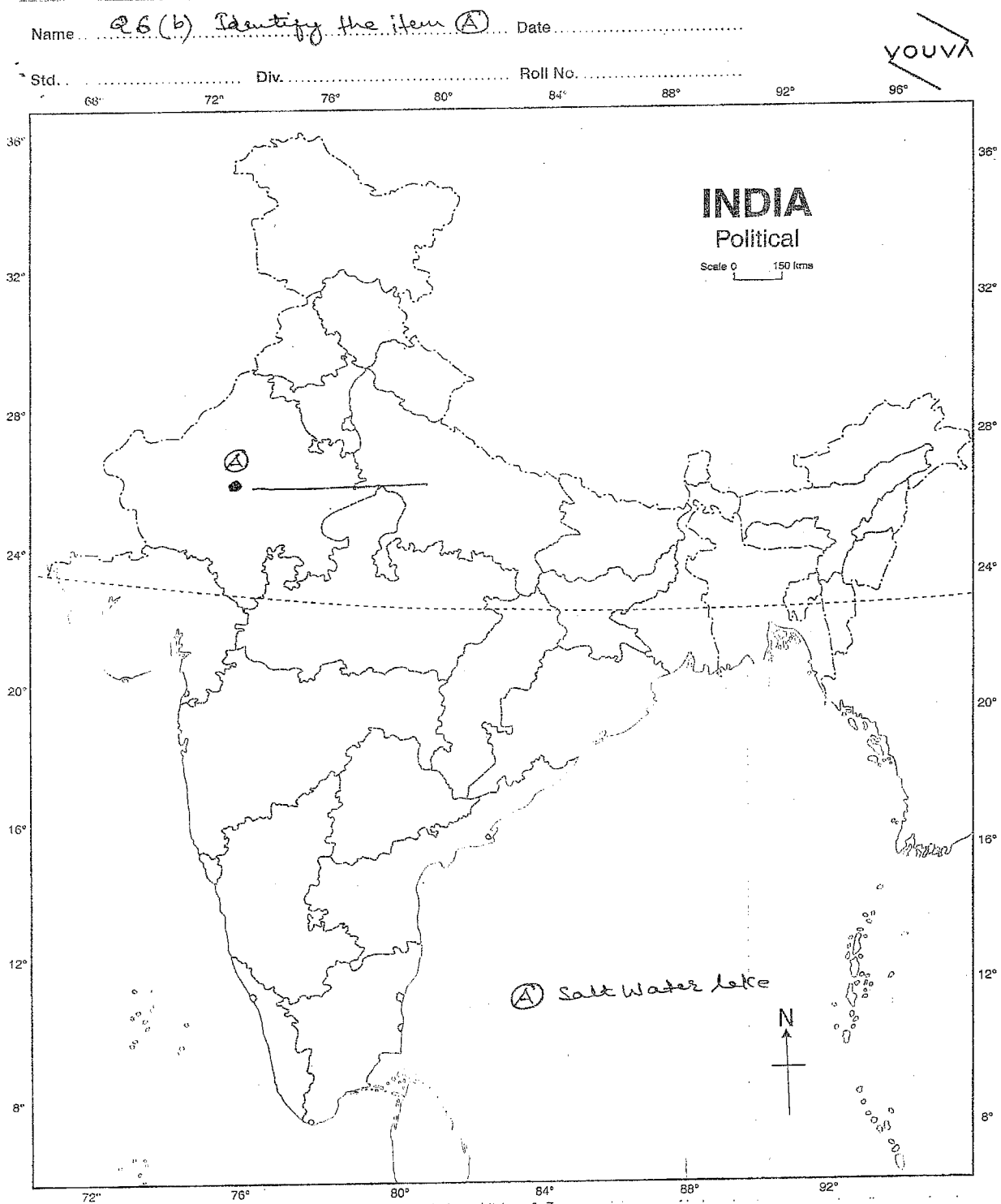


GEOGRAPHY

1. What is the area of the landmass of India? (1)
2. How were the Himalayas formed? (3)
3. Why are quite a few species of plants and animals endangered in India? Give 3 reasons. (3)
4. (i) What are the components of population growth? (3+2=5)
(ii) Why has been is the rate of population growth in India declining since 1981?
5. (i) Write 3 differences between Eastern ghats and Western ghats. (3+2=5)
(ii) Write 2 characteristics of Thorn and Scrub forest.

(OR)

- (i) Why does Tamilnadu coast receive winter rainfall? (2+1+2)
- (ii) Which place receives highest average rainfall in the world?
- (iii) What is River Brahmaputra called in Tibet? Why does it have less silt in its Tibetan part?
6. (a) Locate and label the following on the given political map of India. (2+1=3)
 - (i) Corbett National Park
 - (ii) State having highest sex ratio
- (b) Identify item (A) marked on the political map of India : (A) Salt water Lake



ECONOMICS

1. When was the Rural Employment Generation Programme (REGP) launched? 1993 (1)
2. How did the spread of electricity help farmers in Palampur? (3)
3. "Poverty is the root cause of many evils". Suggest some measures to be taken by the Government to eradicate poverty. (3)
4. What is vulnerability? Which group are most vulnerable to food insecurity? (1+2=3)
5. Explain the following terms : (5)
 - (a) Buffer Stock
 - (b) Issue Price
 - (c) Minimum Support Price
 - (d) Fair Price Shops
 - (e) Public Distribution System.
6. What is unemployment? What are the two types of unemployment prevalent in Rural areas? Write any three factors responsible for this. (1+1+3=5)

General Instructions :

- 1) 1 mark questions are to be answered in one word or one sentence.
- 2) 2 marks questions are to be answered in 20-30 words.
- 3) 3 marks questions are to be answered in 50 words.
- 4) 5 marks questions are to be answered in 70 words.
- 5) There are internal choices in one of the 2 marks questions in Biology, 3 marks questions in Physics, Chemistry and Biology and 5 marks questions in Physics and Chemistry also.

PHYSICS

27 marks

- 1) How will 'G' change on surface of Mars? Write S.I. unit of 'G'. 1
- 2) Is momentum scalar or vector quantity? Write relationship between force and momentum. 1
- 3) A girl moves along the boundary of a square field of side 20 m in 80 sec. What will be the magnitude of displacement at the end of 200 sec.? Also calculate average velocity. 2
- 4) a) State the factors on which buoyant force depends. 3
 b) A force of 16 N is distributed uniformly on one surface of a cube of edge 8 cm.
 Find the pressure on this surface.
 c) A wide steel belt is provided over the wheels of an army tank. Why?

(OR)

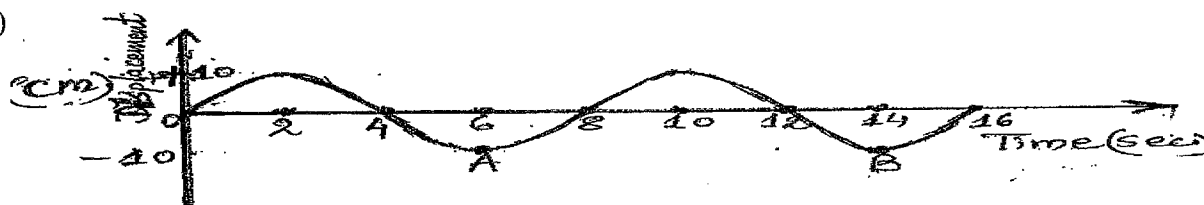
Show that weight of an object on surface of moon is $1/6^{\text{th}}$ of it's weight on surface of earth. (Given : mass of earth is 100 times the mass of moon and radius of earth is 4 times the radius of moon.)

- 5) a) While swimming, a person pushes the water backwards to move forward, why? 3
 b) For how long, a force of 100 N should act on a body of mass 20 kg so that it acquires a velocity of 50 m/s? Calculate distance travelled by the body during this period.
- 6) a) i) Draw velocity-time graph for body which is initially in uniformly accelerated motion and then travels with constant velocity. ii) In case of a freely falling body, name the physical quantity which remains constant. iii) Which physical quantity is obtained by the slope of displacement-time graph? 3
 b) Derive the equation $v^2 = u^2 + 2as$ using graphical method where symbols have their usual meanings.
- 7) a) What is meant by average power? 5
 b) Calculate the work required to be done to stop a car of 1500 kg moving at a velocity of 60 km/hr.
 c) A body of mass m is moving with velocity v , what will be effect on its K.E. if it's velocity becomes $1/4^{\text{th}}$ of initial value? Explain using proper mathematical steps.
- 8) a) State one difference between transverse and longitudinal wave. 5
 b) A person clapped his hands near a cliff and heard the echo after 5 sec. What is the distance of cliff from the person if speed of sound is taken 346 m/s?
 c) What is meant by infrasonic and ultrasonic sound? Write any two applications of ultrasonic sound waves.

(OR)

- a) Define quality or timbre. Which property of sound depends on frequency?
- b) Explain the following :
 i) Roofs and walls of auditorium are covered with rough plasters.
 ii) Curved sound boards are placed behind the stage of a concert hall.

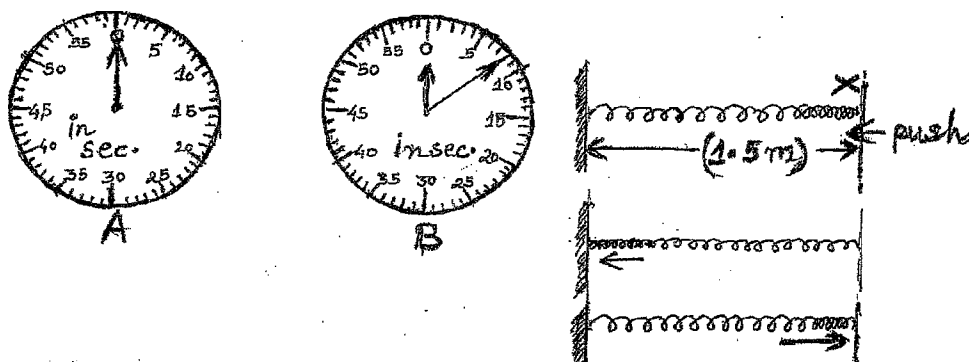
c)



Study the above wave and answer the following questions –

- (i) Calculate time period and frequency of the wave.
- (ii) If the distance between points A and B on the wave is 50 cm then determine speed of the wave.

- 9) A pulse is generated in a slinky at position X as shown in figure and simultaneously stopwatch is started as shown in figure A. The stopwatch is stopped when pulse returns back to 'X'. The final reading of stopwatch is shown in figure B. Calculate speed of pulse generated in slinky.



- 10) Write any two precautions related to the experiment to verify laws of reflection of sound. If the angle between two metallic tubes in the set-up is 120° , what will be angle of incidence? Explain your answer.

CHEMISTRY

23 marks

- 1) How does spreading of wet clothes quicken their drying? Explain. 1
- 2) a) Steam produces more severe burns as compared to boiling water. Give reason. 2
b) Give two factors which increase the rate of evaporation.
- 3) An element 'X' forms an oxide with formula X_2O_3 . 3
a) State the valency of X.
b) Write the formula of (i) chloride of X (ii) sulphate of X

(OR)

- (a) Define Avagadro's number.
- (b) Calculate the number of moles in 112 g of iron. (at mass of Fe = 56 u)
- 4) (a) Explain Bohr and Bury's rules for distribution of electrons into different shells. 3
(b) Draw the electronic structure of element X with atomic number 17 and element Y with atomic number 16.
- 5) (a) A solution is prepared by adding 40 g of sugar in 100 g of water. Calculate the concentration in terms of mass by mass percentage of solution. (2+2+1=5)
(b) State the principle used in separating different components of a mixture by the method of centrifugation. List any two applications.
(c) Give two examples of suspension.
- 6) (a) Write the chemical formula using criss cross method 5
(i) Ammonium Chloride
(ii) Magnesium Carbonate
(iii) Barium Nitrate
(b) (i) Define the term 'molecular mass'.
(ii) Determine the molecular mass of $ZnSO_4$ (at mass of Zn=65u, S=32 u, O=16u)

(OR)

- (a) There are 15 protons and 16 neutrons of an element. Calculate its atomic number and mass number.
- (b) (i) What is an Octet? How do elements reach an Octet?
(ii) Write the name of the sub-atomic particle discovered by J. Chadwick. What type of charge occurs on this particle? In which part of the atom this particle is located?
- 7) Write two differences between suspension and true solution. 2
- 8) What happens when : 2
(i) Iron nail is put in $CuSO_4$ solution. (Give the equation).
(ii) Magnesium ribbon is burnt in air. (Give the equation).

PTO

BIOLOGY

30 marks

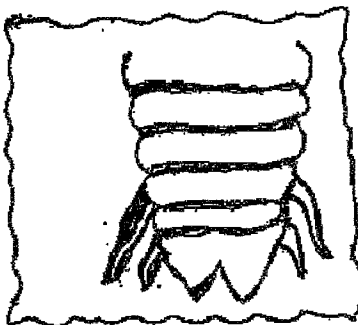
- 1) Name two biologically important compounds that contain both oxygen and nitrogen. 1
- 2) What is the modification introduced by Carl Woese, in the classification proposed by Whittaker. 1
- 3) Explain Why ? 2
 - a) Lysosomes are called 'scavengers of the cell'.
 - b) Mitochondria are known as 'Powerhouse of the cell'.

(OR)

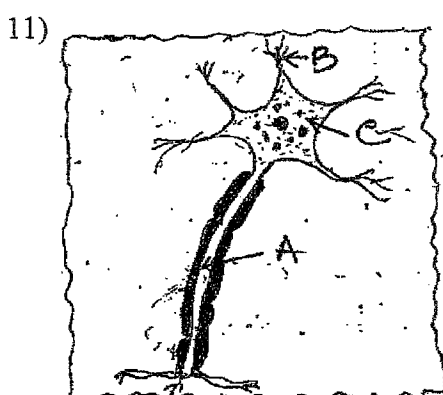
- a) What are ribosomes? Where are they located in the cell?
- b) What is 'membrane biogenesis'?
- 4) a) State two ways in which Phloem is functionally different from XYLEM. 3
- b) Draw a neat diagram of a section of Phloem and label its four parts.
- 5) Continuous addition of fertilizers to the soil destroys its fertility. Long term fertilizers use is substituted with the various cropping pattern to maintain the fertility of the soil – 3
 - a) Mention the three cropping patterns
 - b) Write the basic differences between the cropping patterns.
 - c) What type of values are shown by agriculturists to use bio-fertilisers instead of synthetic fertilizers.
- 6) With the help of a diagram show, 3
 - a) Nitrogen cycle in nature.
 - b) Mention any two processes involved in the fixation of nitrogen in the nature.

(OR)

- a) How carbon exists in nature?
- b) With the help of a diagram explain the carbon cycle operating in nature.
- 7) a) Name one indigenous and one exotic breed of milch cow. 3
- b) In what way the daily nutritional requirement of broilers different from those of egg-layers?
- c) For commercial honey production Italian honey bees are chosen mostly. Give two reasons.
- 8) a) Write the common names of the following : 5
 - (i) Hemidactylus (ii) Asterias (iii) Aranea (iv) Pheretima
 - b) Name the phylum to which they belong
 - c) Define 'Bionomial Nomenclature'.
- 9) a) With the help of suitable examples mention three ways in which microorganisms can enter into human body. 5
- b) Why is making anti viral medicines harder than anti-bacterial medicines?
- c) Mention the role of 'vaccines' in preventing diseases.
- 10) A student made a diagram of posterior end of cockroach studied in the lab. 2



- a) Identify the sex of the cockroach with reason.
- b) Mention another point to differentiate male and female cockroach.



- a) Identify the cell and also identify 'A', 'B', 'C' sequentially.
- b) Which type of tissue is formed by such cells. 2

सामान्य-निर्देशा :

अस्मिन् प्रश्नपत्रे चत्वारः खण्डाः सन्ति।

प्रथमः 'क'-खण्डः - अपठित-अवबोधनम् - 10 अङ्काः

द्वितीयः 'ख'-खण्डः - रचनात्मक-कार्यम् - 15 अङ्काः

तृतीयः 'ग'-खण्डः - अनुप्रयुक्त-व्याकरणम् - 25 अङ्काः

चतुर्थः 'घ'-खण्डः - पठित-अवबोधनम् - 30 अङ्काः

'क' खण्डः -अपठित-अवबोधनम् -10 अङ्काः

1. अधोलिखितम् अनुच्छेदं पठित्वा प्रदत्तप्रश्नानाम् उत्तराणि लिखत-

जीवने धनस्य अत्यधिकं महत्त्वम् अस्ति। धनं विना वयं भोजनम् अपि प्राप्तुं न शक्नुमः। परन्तु यदि लोभेन वयम् अन्धाः भूत्वा अधिकाधिकं धनं प्राप्तुम् इच्छामः, अनुचित-साधनानां प्रयोगं कुर्मः, तर्हि तेन धनेन दुःखम् एव भविष्यति। कोऽपि तद् धनं हरिष्यति इति चिन्ता प्रतिक्षणं वर्धते। धनस्य अभिमानः विवेकं नाशयति। कृष्णधनेन तु जीवने महत् कष्टं भवति। अतः वयम् उचितसाधनैः एव धनार्जनं कुर्याम, ये असहायाः सन्ति तेषां सहाय्यं कुर्याम। त्यागेन एव उपभोगेन वयम् आनन्दं प्राप्तुं शक्नुमः। अन्यस्य धनं प्रति वयं लोभं न कुर्याम।

I. एकपदेन उत्तरत-

(½x4=2)

- (i) कृष्णधनेन जीवने किं भवति?
- (ii) जीवने कस्य अत्यधिकं महत्त्वम् अस्ति?
- (iii) वयं किं प्रति लोभं न कुर्याम?
- (iv) वयं किं प्राप्तुं शक्नुमः?

II. पूर्णवाक्येन उत्तरत-

(2x2=4)

- (i) वयम् उचित-साधनैः किं कुर्याम?
- (ii) कीदृशी चिन्ता प्रतिक्षणं वर्धते?

III. प्रदत्त-अनुच्छेदस्य कृते उचितं शीर्षकं लिखत।

(2)

IV. निर्देशानुसारम् उत्तरत-

(½x4=2)

- (i) 'सुखम्' इति पदस्य किं विलोमपदम् अनुच्छेदे आगतम्?
(क) धनम् (ख) दुःखम् (ग) लोभः
- (ii) 'शक्नुमः' इति क्रियापदस्य कर्तृपदम् अनुच्छेदे किम्?
(क) वयम् (ख) कष्टम् (ग) आनन्दम्
- (iii) 'अत्यधिकं महत्त्वम्' अत्र विशेषणपदं किम्?
- (iv) 'दुःखम्' इति पदस्य क्रियापदम् अनुच्छेदे किम्?
(क) कुर्याम (ख) इच्छामः (ग) भविष्यति

'ख' खण्डः -रचनात्मक-कार्यम् -15 अङ्काः

2. भवान् दिनेशः अस्ति। परीक्षासफलताम् उद्दिश्य मित्रं प्रति लिखिते पत्रे मञ्जूषापदसहायतया रिक्तस्थानानि पूरयित्वा पत्रं पुनः लिखत-

(½x10=5)

(ii) -----अभिषेक!

(i) -----

तिथिः -----

सप्रेम नमः

(iii) ----- कुशलं तत्रास्तु। भवतः पत्रं (iv) ----- । भवान् नवमपरीक्षायां श्रेष्ठैः अङ्कैः उत्तीर्णः (v) ----- इति ज्ञात्वा अहं (vi) ----- अस्मि। भवान् कठिनं (vii) ----- कृत्वा यं सम्मानं प्राप्नोत् तदर्थम् अहं भवते (viii) -----यच्छामि। आशां करोमि यत् भवान् आगामिन्यां परीक्षायाम् अपि श्रेष्ठं प्रदर्शनं करिष्यति। भवतः मातापितृभ्यां (ix) ----- ।

भवतः मित्रम्,

(x) -----

मञ्जूषा -

वर्धापनम्, प्रियमित्र, छात्रावासात्, अत्र, प्रसन्नः, अभवत्, परिश्रमं, दिनेशः, नमो नमः, प्राप्तम्।

3. चित्रम् आधृत्य मञ्जूषायां प्रदत्तशब्दानां सहायतया पञ्चवाक्यानि संस्कृतेन लिखत-

(2x5=10)



मञ्जूषा -

महिला, बालाः, पुष्पाणि, सन्ति, विकसन्ति, अस्ति, वृक्षाः, वातावरणम्, शुद्धम्, फलानि, तडागः, बालिकाः, पतन्ति, सूर्यः, प्रातः, उदेति, भ्रमन्ति।

‘ग’ खण्डः - अनुप्रयुक्त-व्याकरणम् - 25 अङ्काः

4. विकल्पेभ्यः समुचितम् उच्चारणस्थानं चित्वा विचार्य वा लिखत-

(1x5=5)

- (i) ‘इन्द्रः’ अत्र ‘इ’ वर्णस्य उच्चारणस्थानं किम्? (क) कण्ठः (ख) ओष्ठौ (ग) तालुः
- (ii) त्, प्, च् वर्णेषु दन्त्यः वर्णः कः?
- (iii) ‘क्’ वर्णस्य उच्चारणस्थानं किम्? (क) कण्ठः (ख) तालुः (ग) मूर्धा
- (iv) उचितं वर्णसंयोजनं कुरुत-
- नृ + इ + र् + भृ + अ + य् + अः (क) नीरभय (ख) निर्भयः (ग) नीर्भयः
- (v) वर्णसंयोजने रिक्तस्थानं पूरयत-
- वृ + इ + _____ + वृ + आ + नृ = विद्वान्

5. अधोलिखितवाक्येषु रेखाङ्कितपदानां सन्धिं विच्छेदं वा चित्वा लिखत-

(1x4=4)

- (i) छात्रः देवेशं नमति। (क) देवः+ईशं (ख) देव+ईशं (ग) देवे+ईशं
- (ii) षट् + आननः रक्षां करोति। (क) षडाननः (ख) षदाननः (ग) षटाननः
- (iii) त्वं प्रति + एकं पाठं पाठ। (क) प्रतिएकं (ख) प्रत्येकं (ग) प्रत्येकं
- (iv) बालोऽपि आगच्छति। (क) बाल+अपि (ख) बालः+अपि (ग) बाला+अपि

6. उचितधातुरुपैः रिक्तस्थानानि पूरयत-

(1x4=4)

- (i) माता भोजनं _____। (क) अपचः (ख) अपचत् (ग) अपचम्
- (ii) शिष्यः कार्यं _____। (क) करवाणि (ख) कुरु (ग) करोतु
- (iii) छात्राः विद्यां _____। (क) आप्नुयुः (ख) आप्नुयाताम् (ग) आप्नुयात्
- (iv) पुत्रः पितरं _____। (क) सेवेसे (ख) सेवते (ग) सेवते

7. उचित-शब्दरूपैः रिक्तस्थानानि पूरयत-

(1x4=4)

- (i) _____ कुत्र गच्छति? (क) भवन्तः (ख) भवान् (ग) भवता
- (ii) _____ अमरः अस्ति। (क) आत्मानौ (ख) आत्मानः (ग) आत्मा
- (iii) राजा _____ आदरं करोति। (क) विदुषि (ख) विदुषः (ग) विद्वान्
- (iv) सैनिकाः _____ नमन्ति। (क) देशः (ख) देशेन (ग) देशम्

8. उचितं विकल्पं चित्वा रिक्तस्थानानि पूरयत-

(1x4=4)

- (i) छात्रः कक्षायां _____ विश्वसिति ।
 (क) गुरुवे (ख) गुरुम् (ग) गुरौ
- (ii) _____ निकषा वृक्षाः सन्ति ।
 (क) चिकित्सालयम् (ख) चिकित्सालयात् (ग) चिकित्सालयस्य
- (iii) धिक् _____ ।
 (क) दुष्टाय (ख) दुष्टे (ग) दुष्टान्
- (iv) मोहनः _____ चतुरतरः अस्ति ।
 (क) सोहनेन (ख) सोहनात् (ग) सोहनस्य

9. विकल्पेभ्यः उचितम् उत्तरं चित्वा लिखत-

(1x4=4)

- (i) अहम् उप+विश्+ल्यप् पठामि । (क) उपविशत्य (ख) उपविशत्य (ग) उपविश्य
- (ii) जनाः कथां श्रु+तुमुन् गच्छन्ति । (क) श्रुतुम् (ख) श्रोतुम् (ग) श्रुतुमुन्
- (iii) बालः खेलित्वा प्रसन्नः भवति । (क) खेल्+क्त्वा (ख) खेलि+क्त्वा (ग) खेलि+त्वा
- (iv) सैनिकः देशं रक्षितुं तत्परः अस्ति । (क) रक्षा+तुमुन् (ख) रक्ष्+तुमुन् (ग) रक्ष+इतुम्

‘घ’ खण्डः -पठित-अवबोधनम् -30 अङ्काः

10. अधोलिखितम् अनुच्छेदं पठित्वा प्रश्नान् उत्तरत-

एकदा स्वातिनामकः मुनिः पिपासया पीडितोऽभवत् । जलमूलम् अन्विष्यता तेन कश्चन आह्लादकरः शब्दः श्रुतः । तम् अनुसृत्य स अग्रे गतः । तत्र कुत्रचित् पर्वतात् पतन्तः जलबिन्दवः शुष्कपर्णानाम् उपरि पतित्वा मधुरं सङ्गीतं जनयन्ति स्म ।

I. एकपदेन उत्तरत-

(1x2=2)

- (i) मुनिः कया पीडितः आसीत्?
- (ii) मुनिः कुत्र गतः?

II. पूर्णवाक्येन उत्तरत-

(1x2=2)

- (i) मुनिना कीदृशः शब्दः श्रुतः?
- (ii) जलबिन्दवः किं जनयन्ति स्म?

III. निर्देशानुसारम् उत्तरत-

(½x4=2)

- (i) ‘नीचैः’ इति पदस्य विलोमपदम् अनुच्छेदे किम्?
 (क) अग्रे (ख) उपरि (ग) श्रुतः
- (ii) ‘आनन्दकरः’ इति पदस्य पर्यायपदम् अनुच्छेदे किम्?
 (क) आह्लादकरः (ख) विषादकरः (ग) तृषाकरः
- (iii) ‘मधुरं सङ्गीतम्’ अत्र विशेष्यपदं किम्?
- (iv) ‘अभवत्’ इति क्रियायाः कर्तृपदं अनुच्छेदे किम्?
 (क) पिपासा (ख) मुनिः (ग) पीडितः

11. अधोलिखितं श्लोकं पठित्वा प्रदत्त-प्रश्नान् उत्तरत-

भवन्ति नम्रास्तरवः फलोद्गमैः, नवाम्बुभिर्भूरिविलम्बिनो घनाः ।
 अनुद्धताः सत्पुरुषाः समृद्धिभिः, स्वभाव एवैष परोपकारिणाम् ॥

I. एकपदेन उत्तरत-

(1x2=2)

- (i) के नम्राः भवन्ति?
- (ii) तरवः कदा नम्राः भवन्ति?

II. पूर्णवाक्येन उत्तरत-

(1x2=2)

- (i) समृद्धिभिः के अनुद्धताः भवन्ति?
- (ii) भूरिविलम्बिनः के भवन्ति?

III. निर्देशानुसारम् उत्तरत-

(1x2=2)

- (i) ‘वृक्षाः’ इति पदस्य पर्यायपदं श्लोके किम्?
 (क) घनाः (ख) तरवः (ग) स्वभावः
- (ii) ‘दुष्टपुरुषाः’ इति पदस्य विलोमपदं श्लोके किम्?
 (क) अनुद्धताः (ख) नम्राः (ग) सत्पुरुषाः

12. नाट्यांशं पठित्वा प्रदत्तप्रश्नान् उत्तरत-

- नगरपालः - (तन्तुवायं प्रति) भोः, किमेतत् करोषि?
तन्तुवायः - महाशय! अहं त्रुटितान् तन्तून् संयोजयामि।
नगरपालः - किं पठितोऽसि?
तन्तुवायः - आम्! मया गुरुकुले शिक्षा गृहीता।
नगरपालः - किं काव्यरचनां जानासि?
तन्तुवायः - पश्यतु एव भवान्। तन्तुसंयोजने व्यग्रोऽहं कथं काव्यं कुर्याम्?

I. एकपदेन उत्तरत-

(1x2=2)

- (i) कः त्रुटितान् तन्तून् संयोजयति?
(ii) गुरुकुले का गृहीता?

II. पूर्णवाक्येन उत्तरत-

(1x2=2)

- (i) तन्तुवायः कस्मिन् कार्ये व्यग्रः आसीत्?
(ii) तन्तुवायः किं करोति?

III. निर्देशानुसारम् उत्तरत-

(1x2=2)

- (i) 'शिक्षितः' इति पदस्य पर्यायपदं नाट्यांशे किम्?
(क) पठितः (ख) व्यग्रः (ग) काव्यम्
(ii) 'त्रुटितान् तन्तून्' अत्र विशेष्यपदं किम्?

13. मञ्जूषातः उचितपदानि चित्वा अन्वयद्वयं पूरयत-

I. काव्यं करोमि नहि चारुतरं करोमि

(½x4=2)

यत्नात् करोमि यदि चारुतरं करोमि।

भूपालमौलिमणिमण्डितपादपीठ

हे साहसाङ्क! कवयामि वयामि यामि॥

अन्वयः - (अहं) -----करोमि चारुतरं नहि करोमि यदि-----करोमि
चारुतरं करोमि। भूपालमौलिमणिमण्डितपादपीठ-----कवयामि -----यामि।

मञ्जूषा -

हे साहसाङ्क! यत्नात्, वयामि, काव्यं

II. स्नेहं ददाति यो मह्यं नित्यं तस्मै ददाम्यहम्।

(½x4=2)

ज्योतिः पदार्थज्ञानार्थं कोऽहं वदतु साम्प्रतम्॥

अन्वयः - यः-----नित्यं स्नेहं ददाति,-----तस्मैपदार्थज्ञानार्थं-----ददामि,
साम्प्रतं वदतु अहं -----?

मञ्जूषा -

कः, मह्यम्, ज्योतिः, अहम्

14. अधोलिखितवाक्येषु रेखाङ्कितपदानि आधृत्य प्रश्ननिर्माणं कुरुत-

(1x4=4)

- (i) श्वेतकेतुः न्याग्रोधस्य फलम् आहरति। (क) कः (ख) कस्य (ग) किम्
(ii) वृक्षायुर्वेदः महर्षिपराशरेण विरचितः। (क) कया (ख) केन (ग) कस्मै
(iii) जनाः व्याधिना पीडिताः न भवेयुः। (क) के (ख) कौ (ग) का
(iv) श्वेतकेतुः फले बीजानि पश्यति। (क) कस्याम् (ख) कुत्र (ग) कैः

15. निम्नलिखितवाक्येषु रेखाङ्कितपदानां प्रसङ्गानुसारं शुद्धम् अर्थं लिखत-

(1x4=4)

- (i) भारतं जाह्नवी-चन्द्रभागा-जलैः पावितम्। (क) नर्मदा (ख) गङ्गा (ग) यमुना
(ii) भूतले भाति मे अनारतं भारतम्। (क) निरन्तरम् (ख) यदा (ग) कदा
(iii) हे मुने! त्वम् आशु श्रेयः प्राप्स्यसि। (क) विलम्बात् (ख) शीघ्रम्/त्वरितम् (ग) अस्ति
(iv) सहसा क्रियां न विदधीत। (क) सर्वदा (ख) अकस्मात् (ग) शीघ्रम्

सामान्य निर्देश :-

1. इस प्रश्न-पत्र के चार खण्ड हैं- क, ख, ग और घ।
2. चारों खण्डों के प्रश्नों के उत्तर देना अनिवार्य है।
3. यथासंभव प्रत्येक खण्ड के उत्तर क्रमशः दीजिए।

खण्ड- 'क'

प्रश्न 1. निम्नलिखित गद्यांश को पढ़कर दिए गए प्रश्नों के उत्तर दीजिए-

आज का विद्यार्थी भविष्य की सोच में कुछ अधिक लग गया है। भविष्य कैसा होगा, वह भविष्य में क्या बनेगा? इस प्रश्न को सुलझाने में या स्वप्न देखने में वह बहुत समय नष्ट कर देता है। भविष्य के बारे में सोचिए ज़रूर, लेकिन भविष्य को वर्तमान पर हावी मत होने दीजिए क्योंकि वर्तमान ही भविष्य की नींव बन सकता है। अतः नींव को मज़बूत बनाने के लिए आवश्यक है कि भान तो भविष्य का भी हो, लेकिन ध्यान वर्तमान पर रहे। अतः आपकी सफलता का मूलमंत्र यही हो सकता है कि आप एक लक्ष्य लें, सोचें, कि आपको क्या बनना है और क्या करना है और स्वप्न के अनुसार कार्य करना प्रारंभ करें। वर्तमान रूपी नींव को मज़बूत करें और यदि वर्तमान रूपी नींव बनती गई, तो भविष्य रूपी इमारत भी अवश्य बन जाएगी। जितनी मेहनत हो सके, उतनी मेहनत करें और निराशा को जीवन में स्थान न दें। यह सोचते हुए समय खराब न करें कि हे भगवान! मेरा क्या होगा, मैं सफल भी हो पाऊँगा या नहीं? ऐसा करने में आपका समय नष्ट होगा और जो समय नष्ट करता है, समय उसे नष्ट कर देता है। वर्तमान में समय का सदुपयोग भविष्य के निर्माण में सदा सहायक होता है। भविष्य के बारे में अधिक सोच या अधिक चर्चा करने से चिंताएँ घेर लेती हैं। ये चिंताएँ वर्तमान के कर्म में बाधा उत्पन्न करती हैं। मन में लगन कम होती है और लक्ष्य दूर होता चला जाता है। निःसंदेह भविष्य के लिए योजनाएँ बनानी चाहिए, किंतु वर्तमान को विस्मृत नहीं करना चाहिए। भविष्य की नींव बनाने में वर्तमान का परिश्रम भविष्य की योजनाओं से अधिक महत्वपूर्ण है।

- (क) आज का विद्यार्थी अपना बहुत-सा समय किस प्रकार नष्ट कर देता है? (2)
- (ख) हमारी सफलता का मूलमंत्र क्या हो सकता है? स्पष्ट करें। (2)
- (ग) भविष्य के बारे में अधिक सोचने से क्या होता है? (2)
- (घ) किस तरह की सोच से हमारा समय नष्ट होता है? (2)
- (ङ) 'समय' एवं 'परिश्रम' शब्द के एक-एक पर्यायवाची शब्द लिखिए। (1)

प्रश्न 2. निम्नलिखित पद्यांश को पढ़कर पूछे गए प्रश्नों के उत्तर लिखिए-

(2+2+2=6)

मन समर्पित, तन समर्पित

और यह जीवन समर्पित

चाहता हूँ देश की धरती, तुझे कुछ और भी दूँ!

माँ तुम्हारा ऋण बहुत है, मैं अकिंचन,

किंतु इतना कर रहा फिर भी निवेदन-

थाल में लाऊँ सजाकर भाल जब भी,

कर दया स्वीकार लेना यह समर्पण।

गान अर्पित, प्राण अर्पित,

रक्त का कण-कण समर्पित

चाहता हूँ देश की धरती, तुझे कुछ और भी दूँ!

माँज दो तलवार को, कुछ हो न देरी,

बाँध दो कसकर कमर पर ढाल मेरी,

भाल पर मल दो चरण की धूल थोड़ी,

शीश पर आशीष की छाया घनेरी।

स्वप्न अर्पित, प्रश्न अर्पित,

आयु का क्षण-क्षण समर्पित

चाहता हूँ देश की धरती, तुझे कुछ और भी दूँ!

- (क) कवि अपने भावों से देश की धरती को क्या समर्पित करना चाहता है?
 (ख) 'माँज दो तलवार को, कुछ हो न देरी'- ऐसा कवि ने किस संदर्भ में कहा है?
 (ग) इस काव्यांश से हमें क्या प्रेरणा मिलती है?

खण्ड- 'ख'

प्रश्न 3. निर्देशानुसार उत्तर दीजिए-

- | | | | |
|-------|-------------------|--|-----|
| (i) | धनुष, दीवार | (वर्ण-विच्छेद कीजिए) | (1) |
| (ii) | पसद, गदगी | (उचित स्थान पर अनुस्वार का प्रयोग कीजिए) | (1) |
| (iii) | गूगा, चादनी | (उचित स्थान पर अनुनासिक का प्रयोग कीजिए) | (1) |
| (iv) | गिरफ्तार, जमींदार | (उचित स्थान पर नुक्ते का प्रयोग कीजिए) | (1) |

- प्रश्न 4. (i) निडर, अभिशाप (उपसर्ग और मूल शब्द अलग कीजिए) (2)
 (ii) मनुष्यत्व, सुंदरता (मूल शब्द और प्रत्यय अलग कीजिए) (2)

- प्रश्न 5. (i) देवालय, सूर्योदय (संधि विच्छेद कीजिए) (2)
 (ii) यदि+अपि, यथा+अर्थ (संधि कीजिए) (2)
 (iii) निम्नलिखित वाक्यों में उचित विराम-चिह्न लगाइए- (3)
 (क) वाह कितना सुंदर दृश्य है
 (ख) पढ़ते पढ़ते मैं सो गया।

खण्ड- 'ग'

- प्रश्न 6. निम्नलिखित प्रश्नों के उत्तर दीजिए- (2+2+1=5)
 (i) अखाड़े की मिट्टी की विशेषता स्पष्ट कीजिए।
 (ii) "देश और दुनिया को मुग्ध करके शुक्रतारे की तरह ही अचानक अस्त हो गए।"- का आशय स्पष्ट कीजिए।
 (iii) लेखक ने अतिथि के सम्मान में क्या किया था?

- प्रश्न 7. सूखे कीचड़ पर प्रकृति और पशु किस प्रकार चित्रकारी करते हैं, वर्णन कीजिए। (5)

- प्रश्न 8. निम्नलिखित प्रश्नों के उत्तर दीजिए- (2+2+1=5)
 (i) 'एक फूल की चाह' कविता में बीमार बच्ची ने क्या इच्छा प्रकट की?
 (ii) रैदास ने 'गरीब निवाजु' किसे और क्यों कहा है?
 (iii) गुलाब विधाता से क्या शिकायत करता है?

- प्रश्न 9. 'खुशबू रचते हैं हाथ' कविता में कवि किस समस्या की ओर ध्यान आकर्षित करना चाहता है और क्यों? (5)

- प्रश्न 10. हामिद खाँ ने खाने का पैसा लेने से इनकार क्यों किया? उसके अन्य सम्प्रदायों के प्रति आस्था को स्पष्ट करें। (5)

खण्ड- 'घ'

- प्रश्न 11. निम्नलिखित विषयों में से किसी एक विषय पर दिए गए संकेत बिन्दुओं के आधार पर लगभग 80-100 शब्दों में अनुच्छेद लिखिए- (5)

- (क) समय ही जीवन है
 (i) समय का महत्त्व
 (ii) जो समय नष्ट करता है उसे समय नष्ट कर देता है
 (iii) जीवन की सफलता का आधार समय
 (iv) समय को खोना जीवन भर हाथ मलना।

(ख) ऋतुओं का राजा वसंत

- (i) भारत में ऋतुओं का चक्र
- (ii) वसंत ऋतु के आगमन पर प्रकृति का शृंगार
- (iii) माँ सरस्वती का जन्मदिन
- (iv) ऋतुराज के रूप में वसंत।

(ग) कमर तोड़ती महँगाई

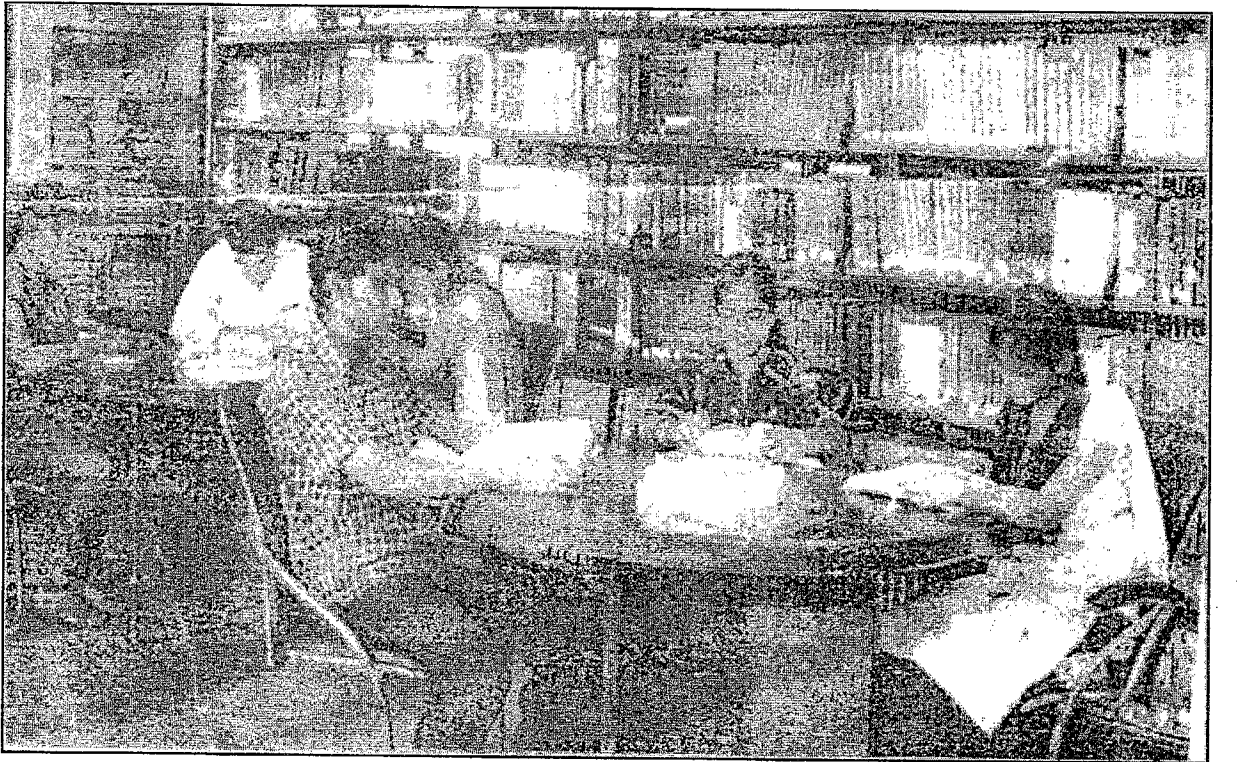
- (i) प्रस्तावना
- (ii) महँगाई के कारण
- (iii) आम आदमी का संकट
- (iv) नियंत्रण के लिए उपाय।

प्रश्न 12. आप 'सरस मेला' देखने गए। वहाँ आपने क्या-क्या किया, इसका वर्णन करते हुए अपने मित्र को एक पत्र लिखिए। (5)

प्रश्न 13. टेलीविज़न पर प्रसारित किसी कार्यक्रम पर चर्चा करते हुए दो मित्रों के बीच के आपसी संवाद को लिखिए। (5)

प्रश्न 14. 'चमक वाशिंग पाउडर' नामक उत्पाद हेतु 20-25 शब्दों में एक विज्ञापन तैयार कीजिए। (5)

प्रश्न 15. नीचे दिए गए चित्र को ध्यान से देखकर मन में उभरे विचारों को अपनी भाषा में लगभग 20-30 शब्दों में प्रस्तुत कीजिए। विचारों का वर्णन स्पष्ट रूप में चित्र से ही सम्बद्ध होना चाहिए। (5)



DELHI PUBLIC SCHOOL, BHILAI (C.G.)

DATE : 16-02-2018

ANNUAL EXAMINATION, 2018

Time: 90 min.

CLASS : IX

GENERAL KNOWLEDGE

M.M. : 100

NAME : _____ ROLL NO. _____ CLASS/SEC _____

INVIGILATOR'S SIGNATURE _____

General Instructions :

- All the questions are compulsory.
- Each question carries one mark.
- For 'match the following' write the correct answer in the given column.
- Follow the instructions as given, for each set of questions

Q.1) Name the Reformers of the following Reform Movements : (5)

- a) Brahmo Samaj _____
- b) Depressed classes mission society _____
- c) Arya Samaj _____
- d) Ramakrishna Mission _____
- e) Bharat Sewak Samaj _____

Q.2) Write the correct alternatives : (10)

- (i) The principal language of Tamilnadu is
a) Tamil b) Telugu c) Malayalam d) Kannada _____
- (ii) Famous man-made lake in Udaipur with a palace in the middle of it
a) Sambhar b) Pichola c) Mansarovar d) Pulicat _____
- (iii) India's satellite launching station located on the Andhra Coast
a) Sriharikota b) Chandipur c) Pokaran d) None of these _____
- (iv) A rock-cut temple in Ellora caves
a) Kailasha temple b) Meenakshi Temple c) Konark Temple d) Birla Temple _____
- (v) A place in Bihar known for the tomb of Sher Shah Suri
a) Patna b) Sasaram c) Gayad) Nalanda _____
- (vi) Highest minaret in the world(290 ft.high)located in New Delhi is
a) Qutb Minar b) Red Fort c) Char Minar d) Jama Masjid _____
- (vii) Cremation place of the late Jawaharlal Nehru in Delhi
a) Shanti Kanan b) Shanti Dham c) Shanti Sthal d) Shanti Vana _____
- (viii) It was the ancient capital of the Vijaya Nagar
a) Kanchipuram b) Madurai c) Tanjore d) Hampy _____
- (ix) This country is called the Gift of the Nile
a) South Africa b) Zimbabwe c) Egypt d) Zaire _____
- (x) A town in Jordan, the birthplace of Christ
a) Jerusalem b) Rome c) Bethlehem d) Mecca _____

Q.3) Match the following :

(10)

- | | | |
|------------------|----------------|-----------|
| 1) Albania | a) Addis Ababa | 1. _____ |
| 2) Bangladesh | b) Riyadh | 2. _____ |
| 3) Denmark | c) Teheran | 3. _____ |
| 4) Greece | d) Athence | 4. _____ |
| 5) Nepal | e) Tirana | 5. _____ |
| 6) Ethiopia | f) Budapest | 6. _____ |
| 7) Finland | g) Dhaka | 7. _____ |
| 8) Hungary | h) Kathmandu | 8. _____ |
| 9) Iran | i) Copenhagen | 9. _____ |
| 10) Saudi Arabia | j) Helsinki | 10. _____ |

Q.4) Name the following Tourist Attractions :

(5)

- A place in Meghalaya with the heaviest average rainfall.
- A mountain range in Tamil Nadu having large tea plantations.
- The official residence of the President of India in New Delhi.
- The city famous for Taj Mahal .
- A glacier from which the Ganga originates.

Q.5) Name the rivers on which the following cities are located :

(5)

- Rome
- London
- Kabul
- Madrid
- Dublin

Q.6) Name the games the following players are associated with -

(5)

- Dinesh Khanna
- Rod Laver
- Ashok Mankad
- Bobby Fischer
- Santosh Yadav

Q.7) Name the world famous personalities for their following contributions -

(5)

- He drafted the American Declaration of Independence.
- He abolished slavery in the U.S.
- She served the destitutes in India and was awarded the Nobel Peace Prize.
- He was the South African President who was given the Nobel Peace Prize.
- How many prizes where instituted by Dr. Nobel?

Q.8) Match the following :

(10)

- | | | |
|---------------------------|---------------------------|-------|
| 1.Sahara Desert | a) Botswana | _____ |
| 2.Great Australian Desert | b) S.W.Turkistan | _____ |
| 3.Colorado | c)South Sinkiang,China | _____ |
| 4.Gobi Desert | d)N.W. India and Pakistan | _____ |
| 5.Kalahari Desert | e) North Africa | _____ |
| 6.Kyzyl Kum | f) Mongolia and China | _____ |
| 7.Kara Kum Desert | g)W.Australia | _____ |
| 8.Takla Makan Desert | h)North Chile | _____ |
| 9.Thar Desert | i) Uzbekistan | _____ |
| 10.Atacama Desert | j)California | _____ |

Q.9) Name the currencies against the names of their countries given below -

(10)

- | | |
|----------------|-------|
| a) Vietnam (N) | _____ |
| b) Portugal | _____ |
| c) Iraq | _____ |
| d) Mauritius | _____ |
| e) Thailand | _____ |
| f) Taiwan | _____ |
| g) Cambodia | _____ |
| h) Germany | _____ |
| i) Mongolia | _____ |
| j) Bolivia | _____ |

Q.10) Write the correct alternatives :

(10)

- (i) How many official languages does the UN have ?
a) 5 b) 6 c) 7 d) 8 _____
- (ii) Kalinga was conquered by whome in 261 BC
a) Bindusara b) Chandragupta Maurya c) Ashoka d) Harshvardhan _____
- (iii) Ranji Trophy is awarded for
a) Hockey b) Cricket c) Football d) Badminton _____
- (iv) The Nubian desert is in
a) East Africa b) Russia c) Arabia d) Mongolia _____
- (v) This is called the holy land
a) Chicago b) Jaipur c) Islamabad d) Palestine _____
- (vi) This is called Tower of Silence
a) Jodhpur b) Mumbai c) Bikaner d) Jaipur _____
- (vii) This is called the Cinema City of the world
a) Bollywood b) Pollywood c) Hollywoodd) Collywood _____
- (viii) Victoria Memorial is in
a) London b) Mumbai c) Bangalore d) Kolkata _____
- (ix) The Buddha got enlightenment here
a) Bodh Gaya b) Kusinara c) Buxar d) Chauri Chaura _____
- (x) Apart from Hindi the people of U.P. speak this language the most
a) English b) Awadhi c) Magadhi d) Dogri _____

Q.11) Answer the following questions :

(10)

- i) What is the highest rank in the Indian Air Force?
- ii) Where was Mahatma Gandhi born ?
- iii) A town in Australia famous for Gold mines.
- iv) "He who neglects learning in his youth, loses the past & is dead for the future", Who said it?
- v) Which is called the 'City of Golden Gate'?
- vi) In which city is the film industry Bollywood established ?
- vii) 1993 literature prize was won by
- viii) In which town of Spain was the famous Battle of Trafalgar fought?
- ix) Where are the headquarters of UNESCO located? (City)
- x) When did World War I begin?

Q.12) Write True/False :

(5)

- i) LOTUS is a popular Spread Sheet package.
- ii) Printer is an input device.
- iii) QDOS was written by Tim Paterson.
- iv) One byte is made up of 16 bits.
- v) To stop and boot the operating system again is known as RESTORE.

Q.13) Answer the following Questions :

(10)

- a) Who is the 15th Lok Sabha Speaker ?
- b) Who is the first chief minister of Jharkhand?
- c) Union Government announced Demonetization or Note Bandi on
- d) Who has won Liberty medal for 2014?
- e) What is the flight number of the Malaysian plane, that went missing on 8th March, 2014?
- f) Who was elected the President of the National Congress Party in 2017?
- g) Where was the High Court bench of Chhattisgarh established?
- h) Where is Kumbh Mela organized in Chhattisgarh every year?
- i) Which is the oldest temple of Chhattisgarh?
- j) Who is the Chief Minister of Chhattisgarh?

.....